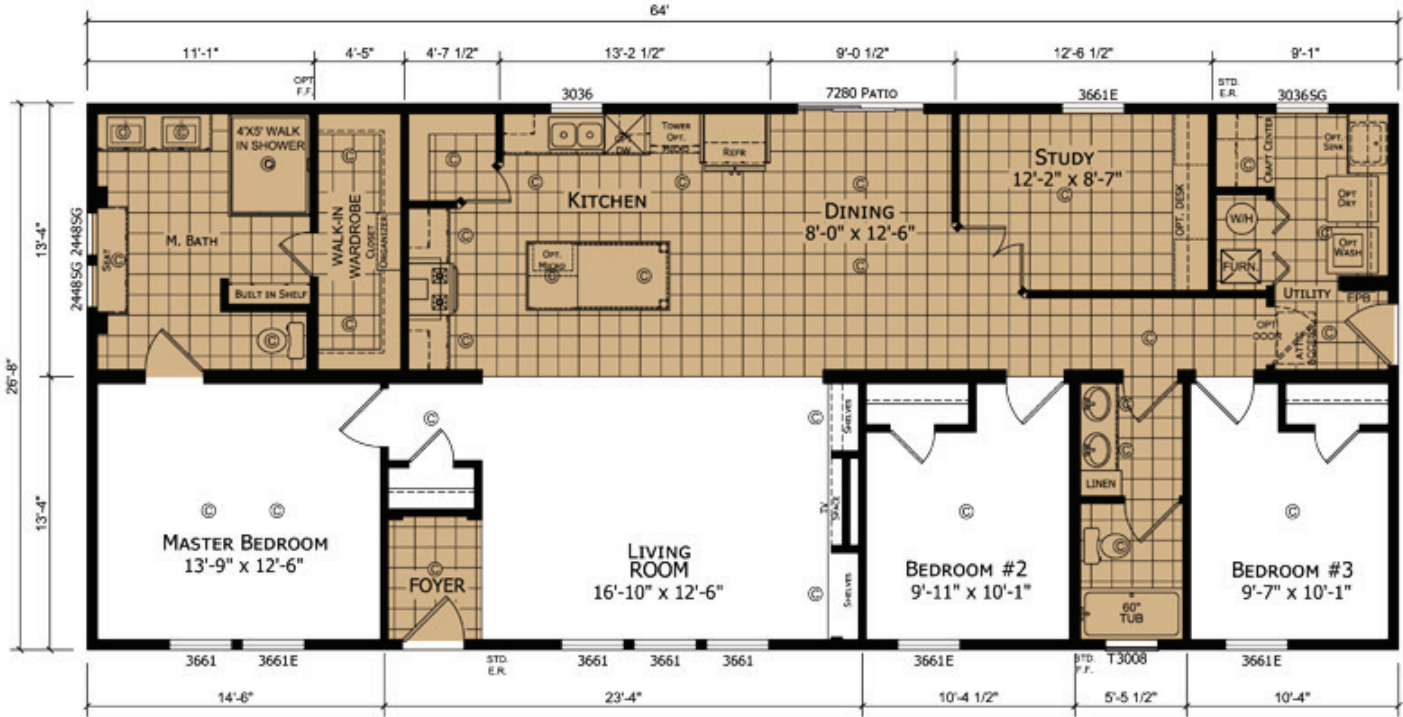


3744 N. US 31 SOUTH | TRAVERSE CITY 49684 | 231-947-6561



DESCRIPTION	COST
(2) Linen Over Commode	270.00
Opt Utility Sink	170.00
HW Urban Putty IPO Std HW	920.00
Dove Tail Soft Close Drawers & Doors - Kit	495.00
Subway Tile between Hood & Ceiling	305.00
(1) Can Lights	65.00
Programmable Thermostat	110.00
Trane Hi Eff Gas IPO STD Elect	1235.00
Trane Furnace Propane Conv Kit	50.00
Ceiling Fan w/ Light Kit	155.00
Transom 8x30	135.00
OSB Marriage Wall >60' Hitch	720.00
Carbon/Smoke Detector Upgrade T/o	260.00
2014 NEC	355.00
2015 IECC - State Fee	750.00
Floor Wrap (MODS)	205.00



PG - #9
Redman / 28' State Code Modular
26'8" x 64' | 3 Bed 2 Bath

3744 N. US 31 SOUTH | TRAVERSE CITY 49684 | 231-947-6561

DESCRIPTION	COST
R52 Roof Insulation IPO R-40	400.00
Extra Interior Door	165.00
Frost Free Faucet	75.00
Patio Door IPO 1 Window	750.00
Washer/Dryer Cabs	120.00
40 Gal Elec Water Heater IPO 30 Gal Elec	130.00
3 Hinges per Door	50.00
70# Roof IPO 30 #	3825.00
(3) Under Cabiner Lighting	300
Extra Conduit Drop in Panel Box	25.00
3" White Interior Trim	1205.00
Optional Study	125.00
S/C Gas Range IPO S/C Electric	85.00
Opt Study Cabinets	695.00
Craftsman Door IPO 5P Resident	325.00
Full Wall Subway IPO STD	485.00
CRS Item	200.00
TOTAL	\$201,500
<i>Prices Include Delivery & Set-up on Buyer's Approved Foundation - Artist Representation May Show Options Not Included In Price</i>	
PINE GROVE HOMES - 3744 N. US 31 SOUTH - TRAVERSE CITY, MI 49601	
231-947-6561	



Updated - 07/21/22