



Harmony Series Homes

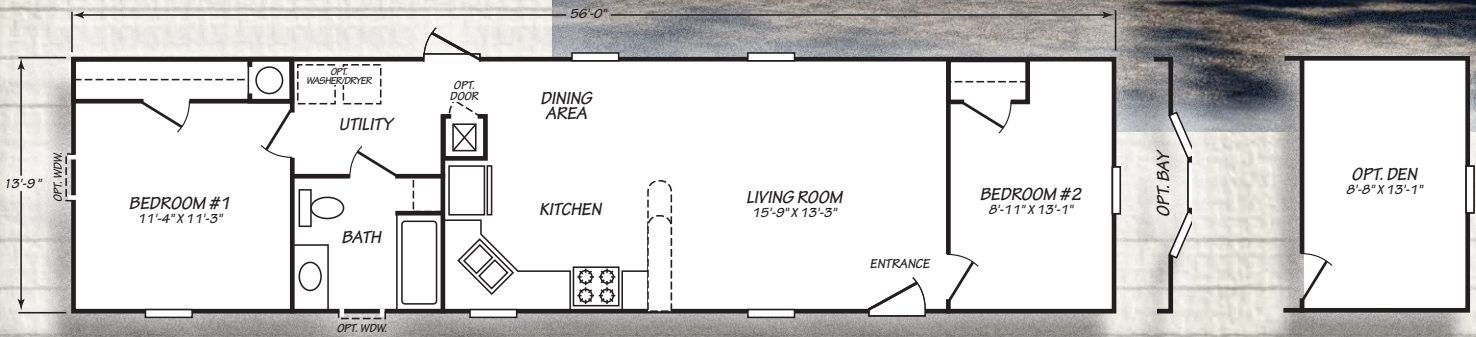


©2017 FRIENDSHIP HOMES ALL RIGHTS RESERVED

150503ESD

2 bed • 1 bath

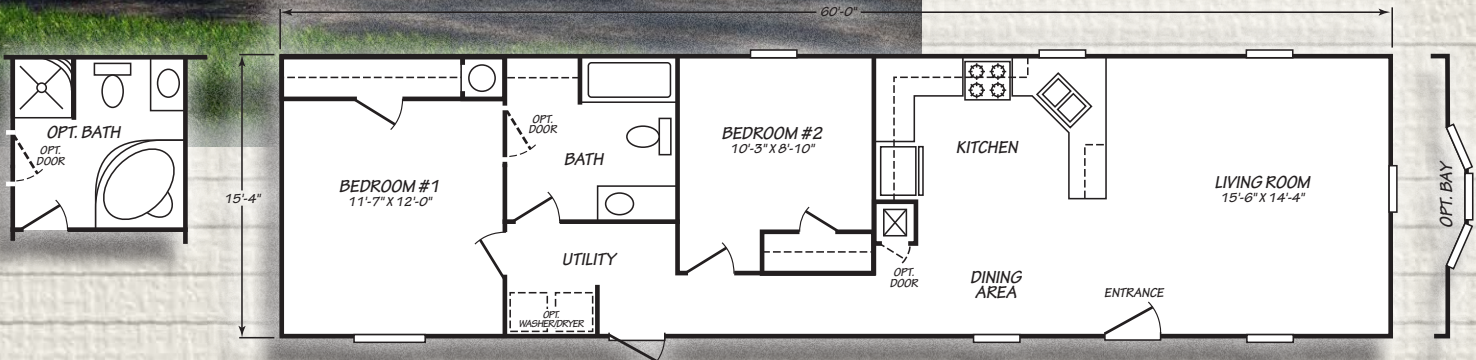
770 sq.ft.



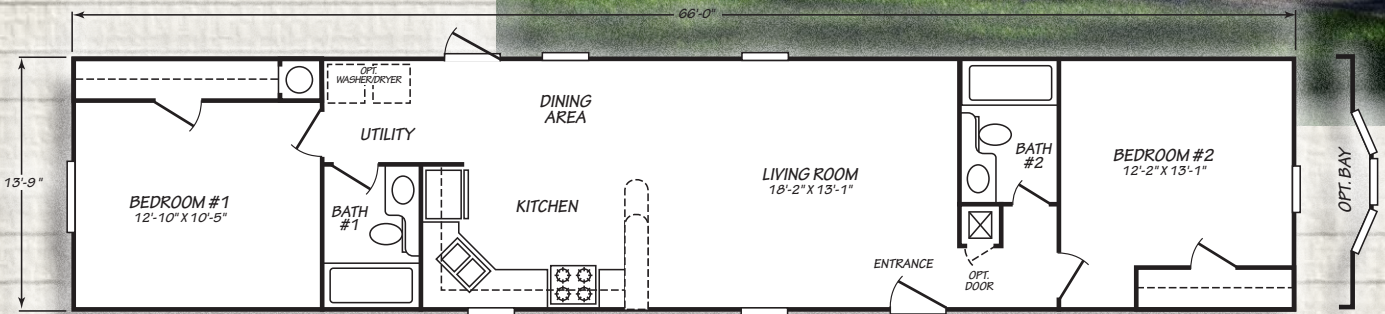
150510ESD

2 bed • 1 bath

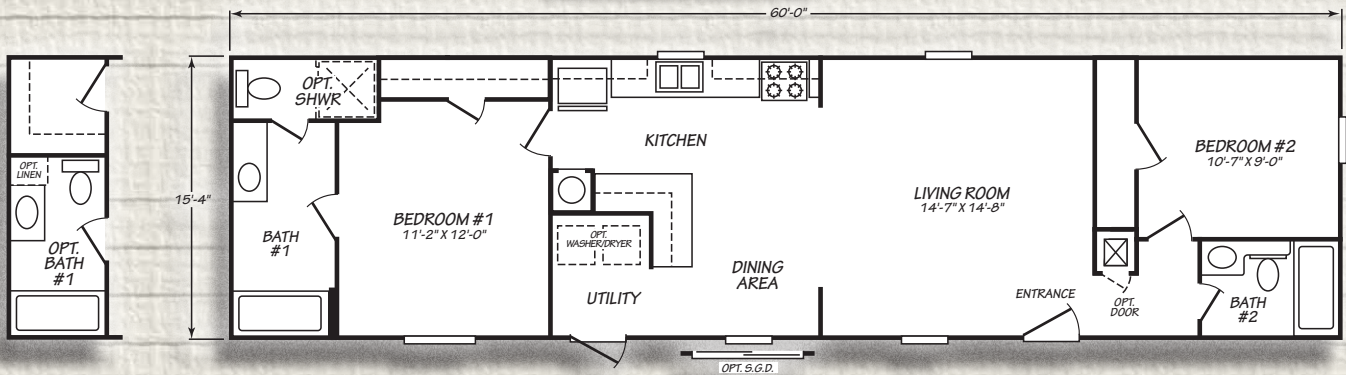
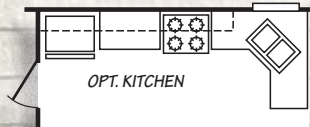
918 sq.ft.



150512ESD
2 bed • 2 bath
907 sq.ft.

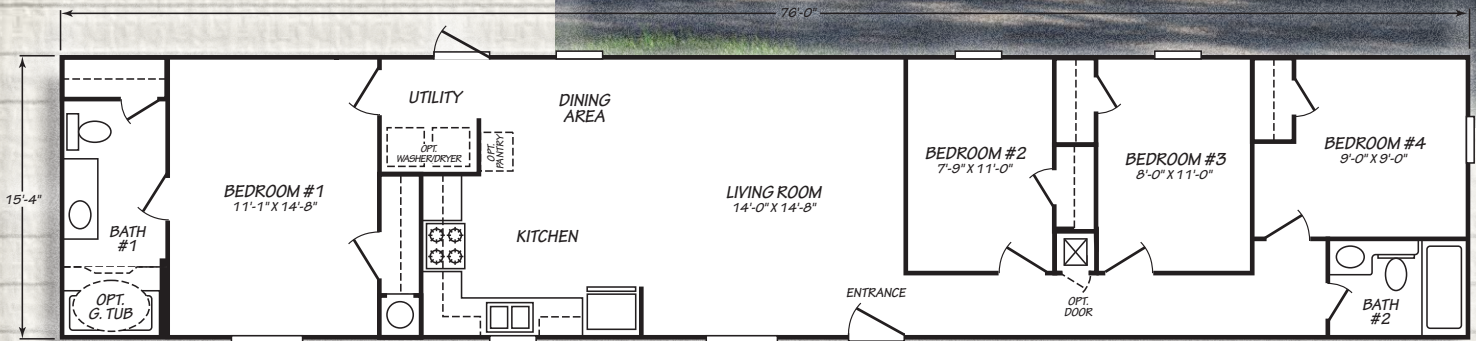


150515ESD
2 bed • 2 bath • 918 sq.ft.



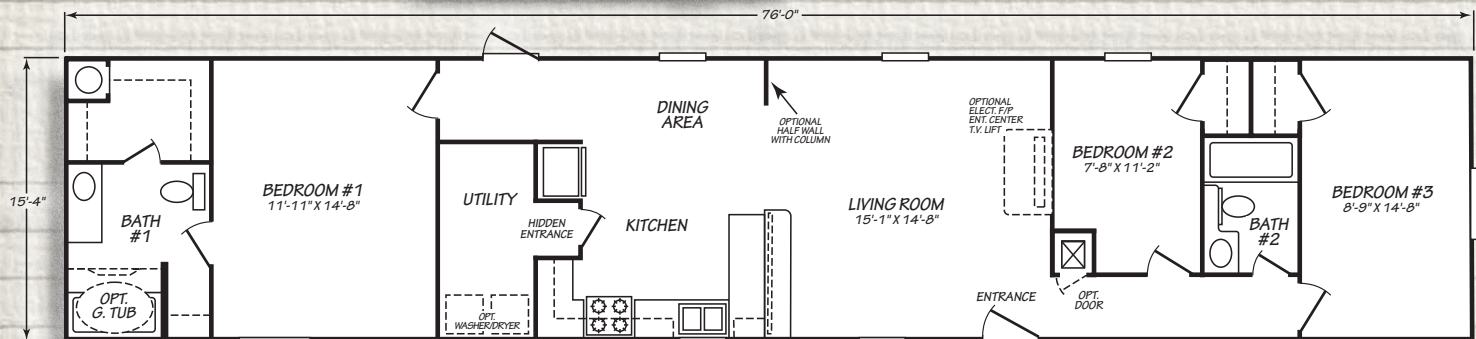
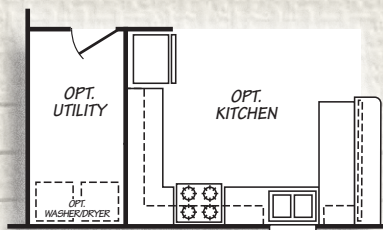
150522ESD

4 bed • 2 bath
1,162 sq.ft.



150530ESD

3 bed • 2 bath • 1,162 sq.ft.

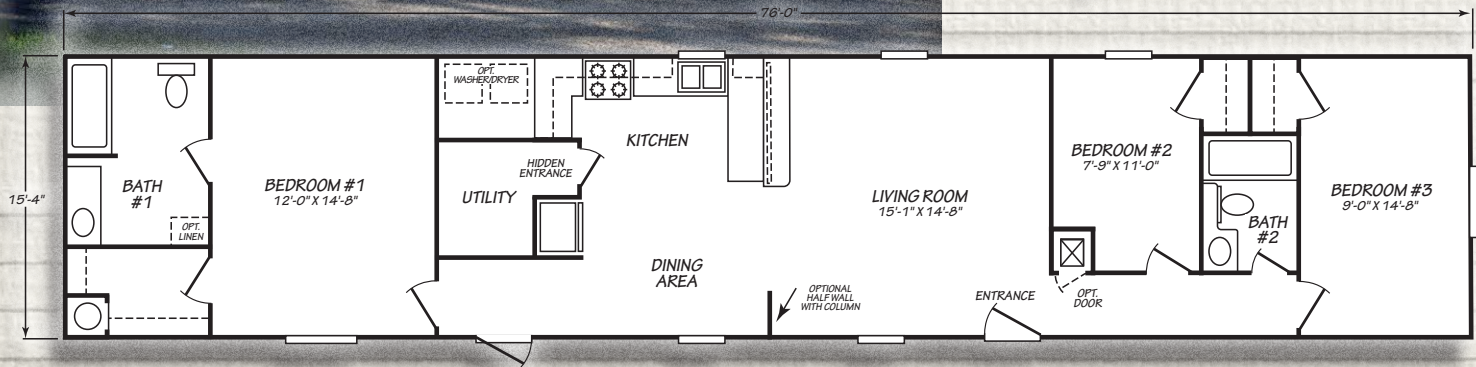
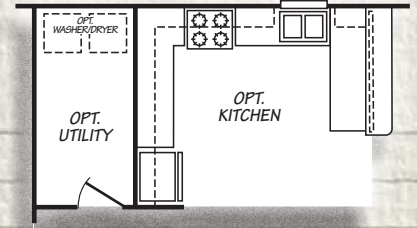




150531ESD

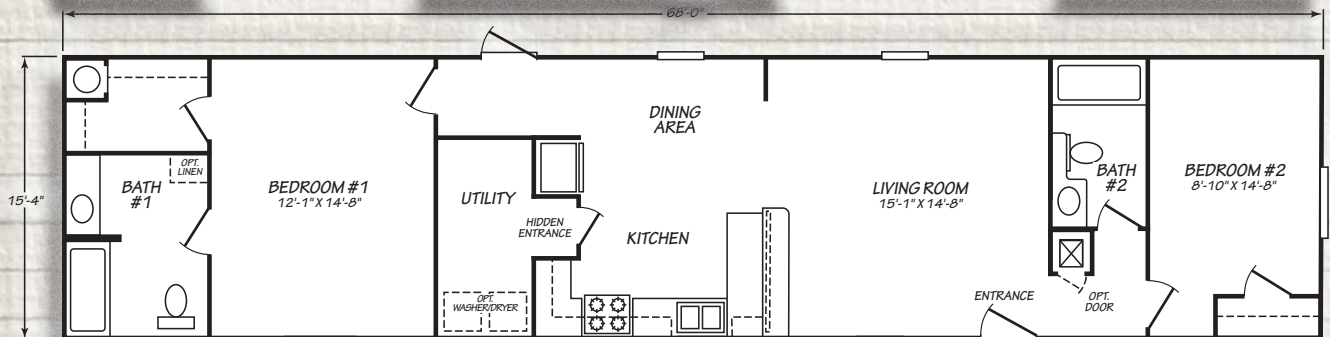
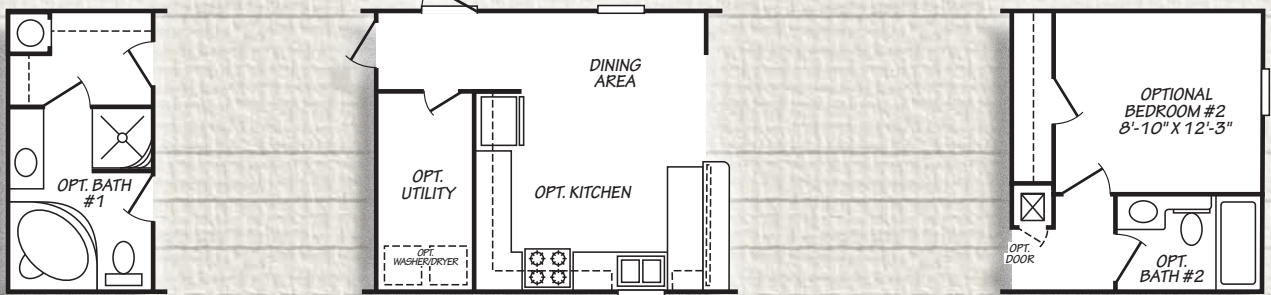
3 bed • 2 bath

1,162 sq.ft.



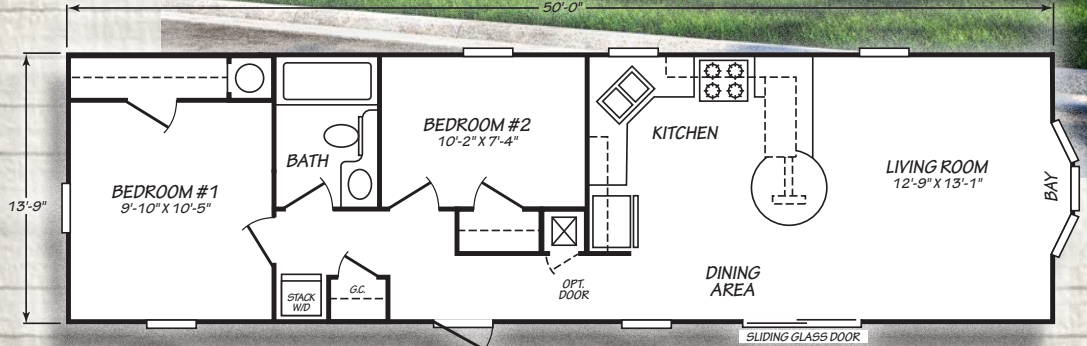
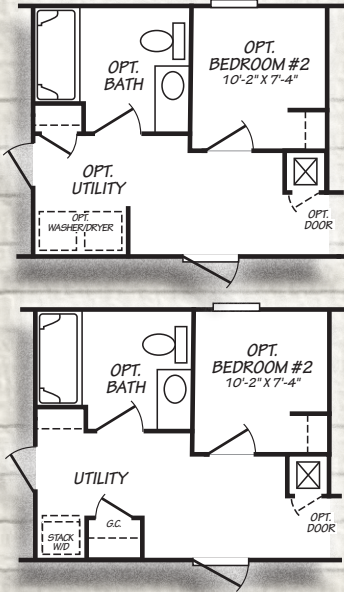
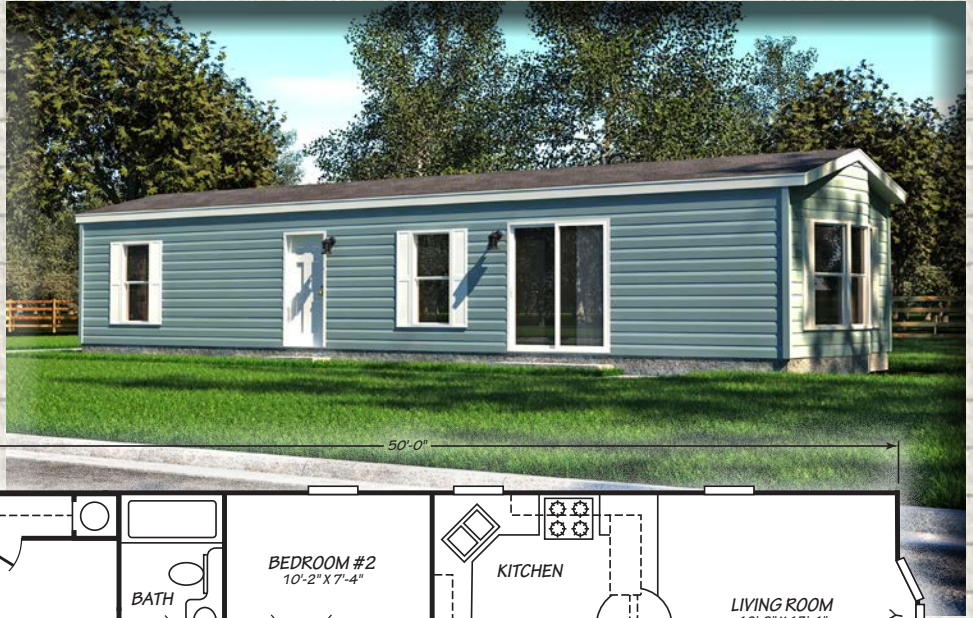
150532ESD

3 bed • 2 bath • 1,040 sq.ft.



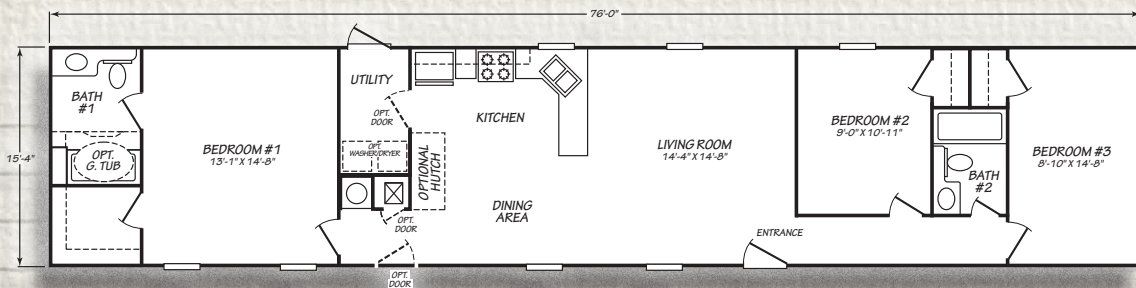
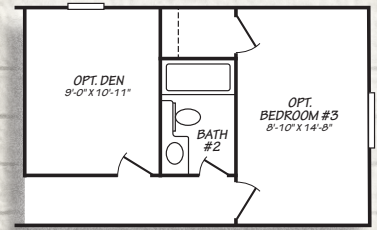
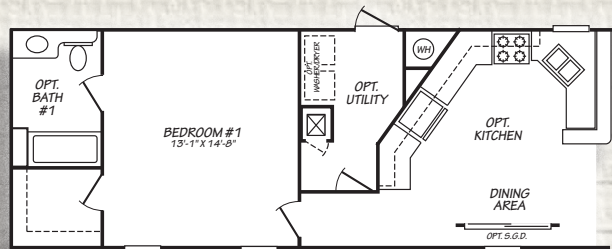
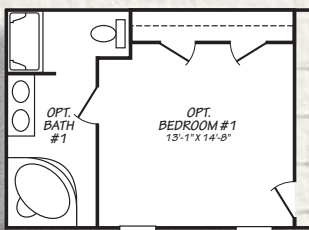
150559ESD

2 bed • 1 bath
770 sq.ft.



150561ESD

2 bed • 1 bath • 918 sq.ft.



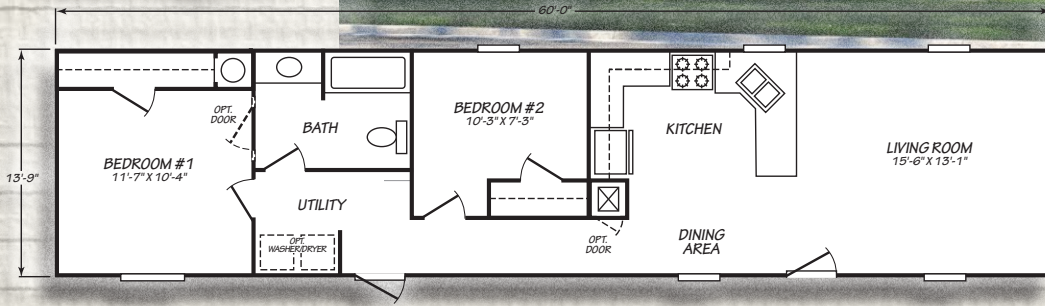


150565ESD

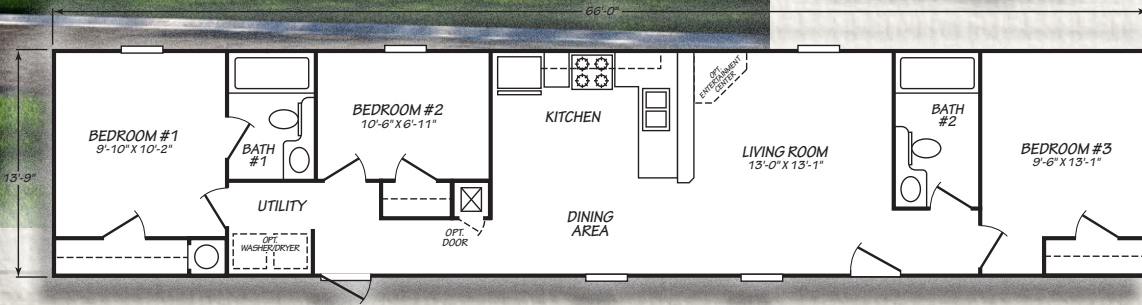
2 bed • 2 bath • 1,620 sq.ft.



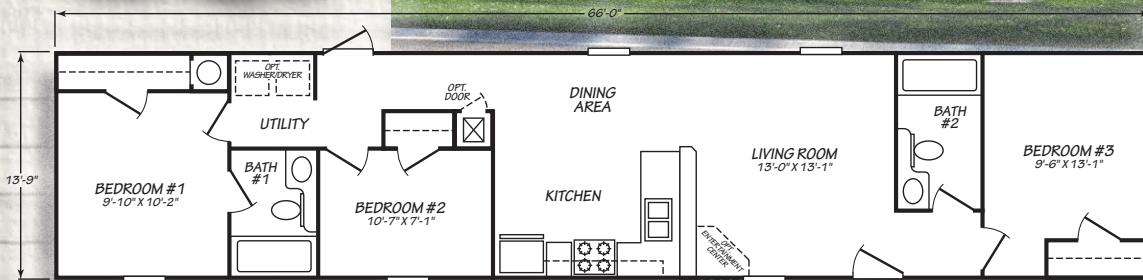
150567ESD
2 bed • 1 bath
825 sq.ft.



150568ESD
2 bed • 1 bath
918 sq.ft.

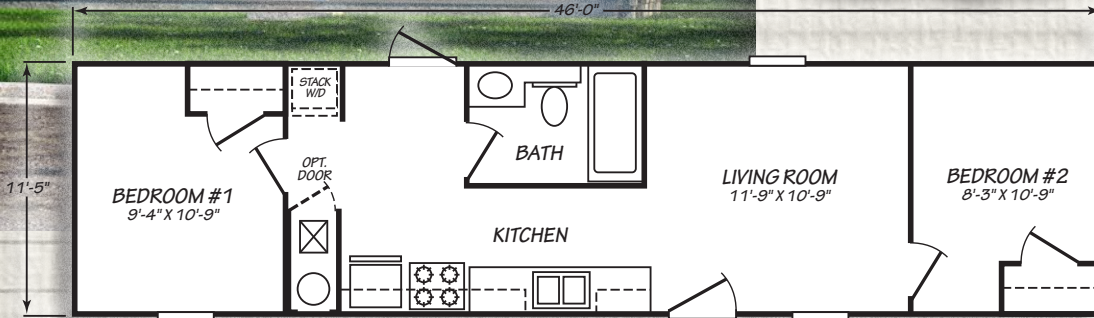


150569ESD
3 bed • 2 bath
907 sq.ft.

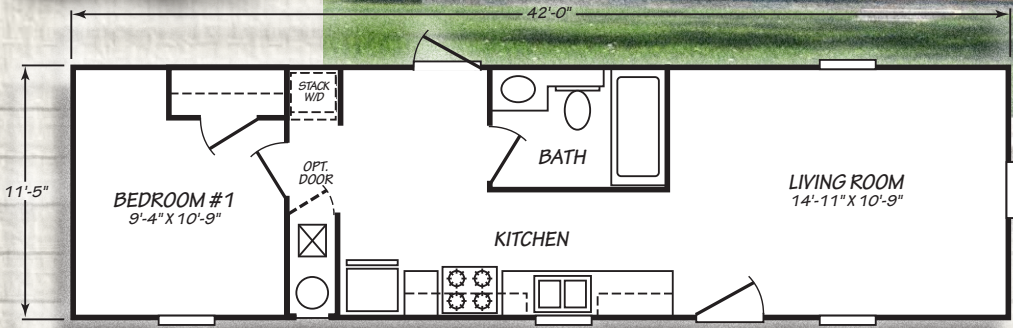




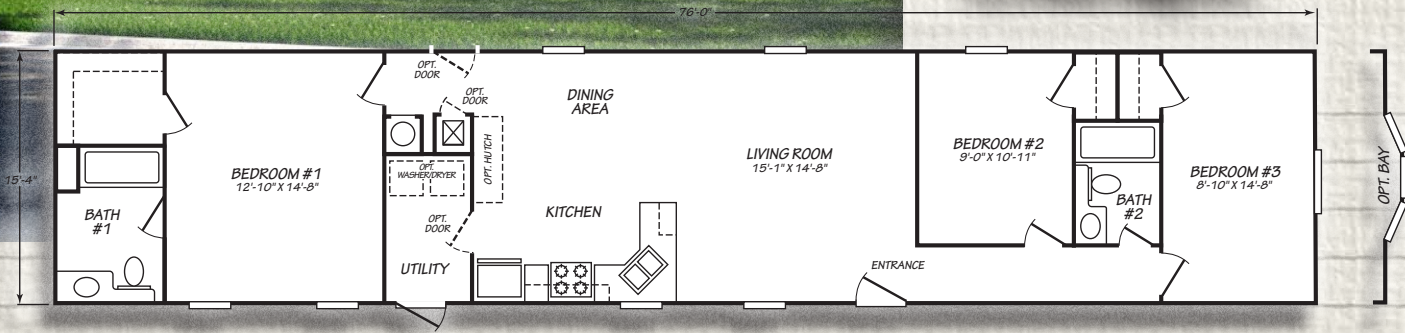
150584ESD
2 bed • 1 bath
526 sq.ft.



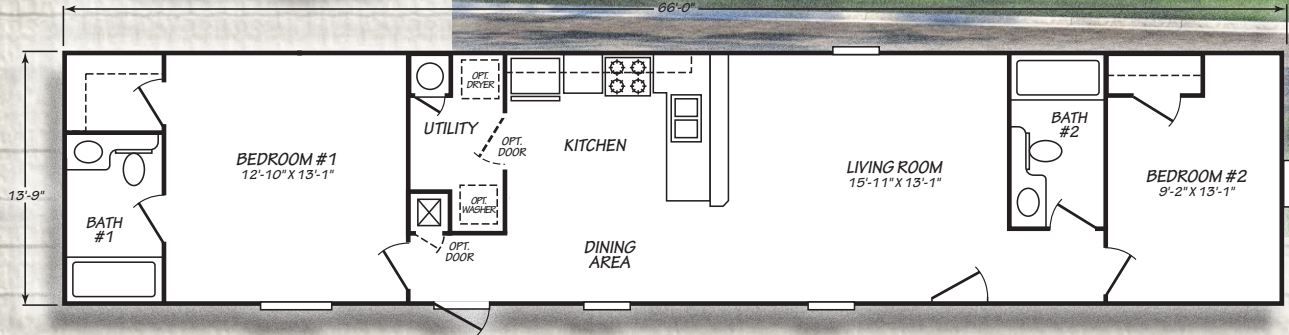
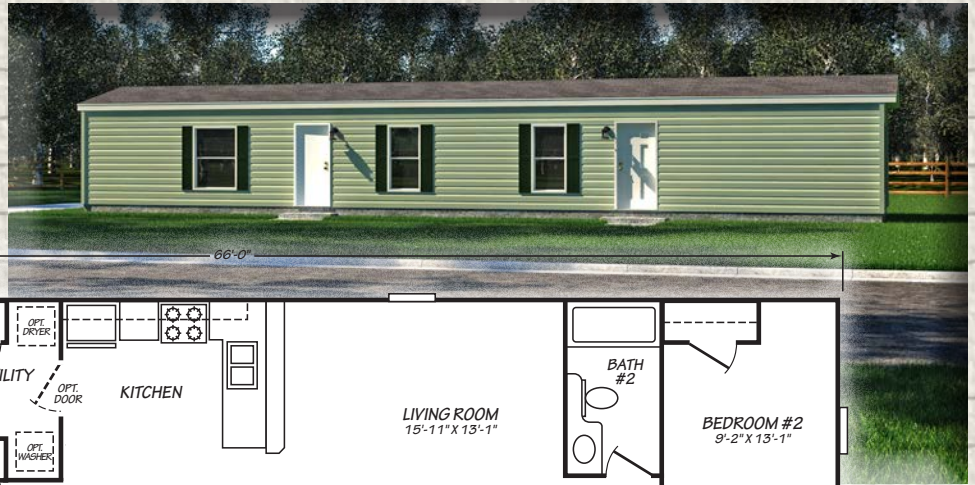
150591ESD
1 bed • 1 bath
480 sq.ft.



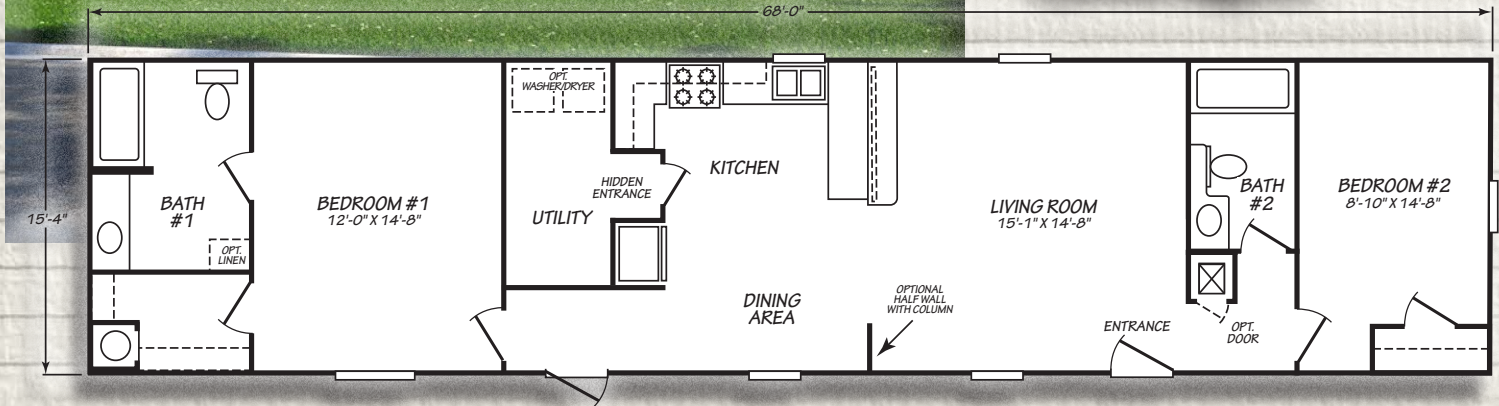
150593ESD
3 bed • 2 bath
1,162 sq.ft.



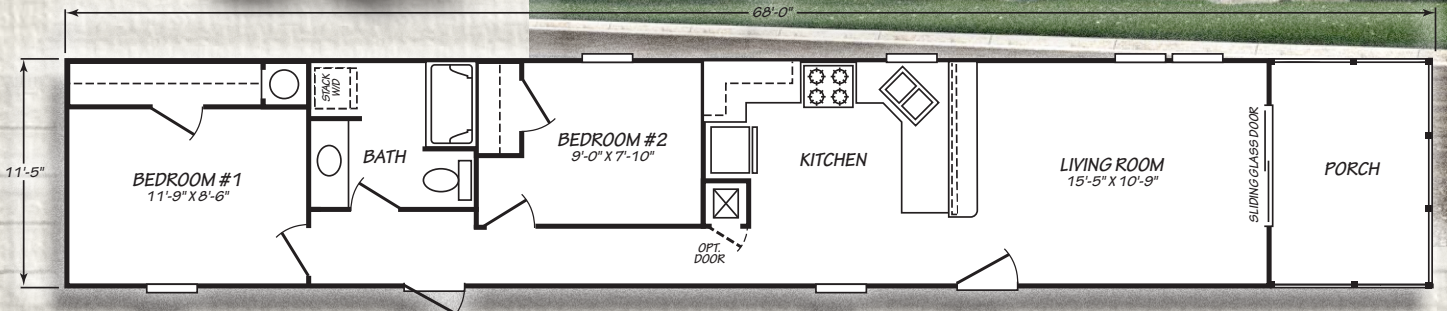
150594ESD
2 bed • 2 bath
907 sq.ft.



150595ESD
2 bed • 2 bath
1,040 sq.ft.

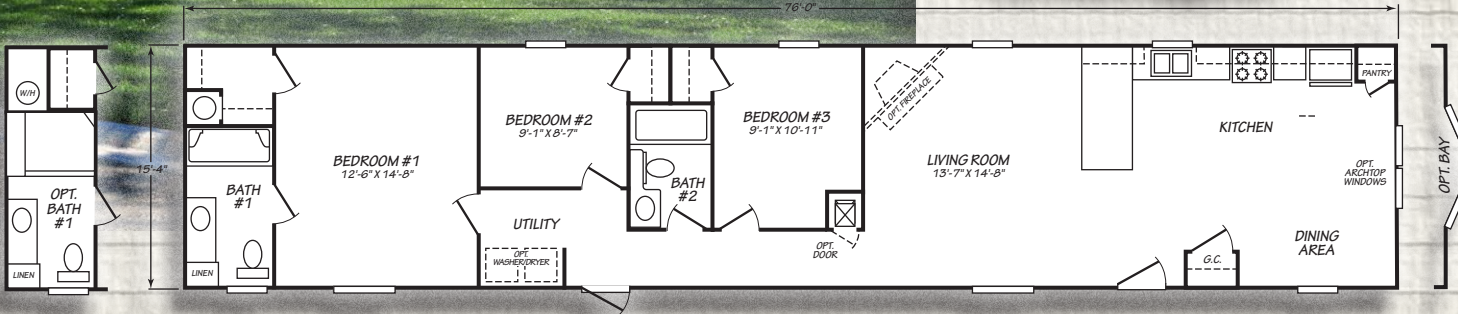


150601ESD
2 bed • 1 bath
687 sq.ft.

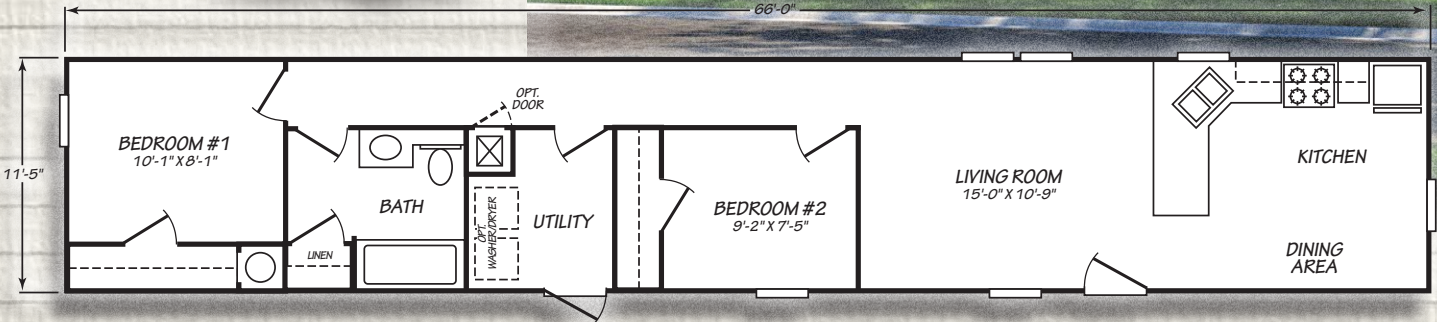




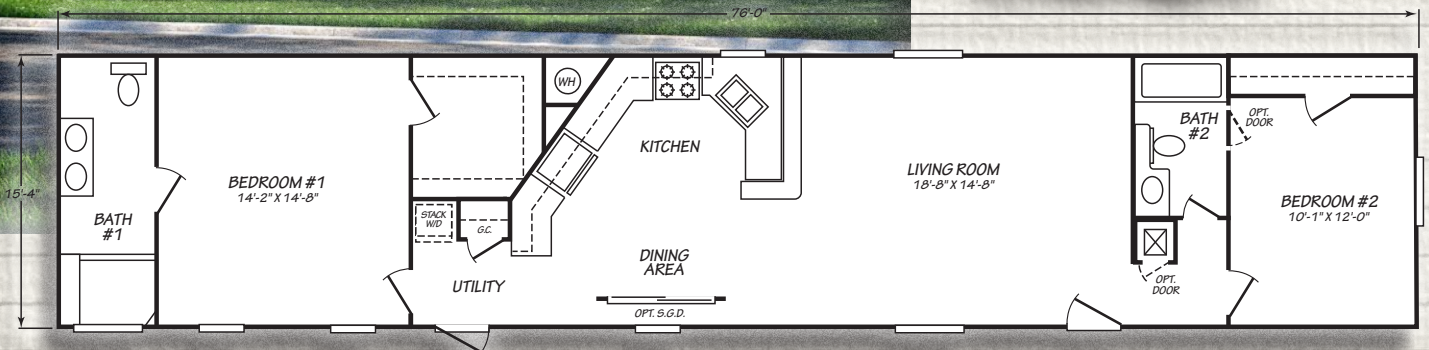
150609ESD
3 bed • 2 bath
1,162 sq.ft.



150634ESD
2 bed • 1 bath
755 sq.ft.



150677ESD
2 bed • 2 bath
1,162 sq.ft.





Standard Features Harmony Series Homes

Energy Saving Elements

- Kinro Low E Thermopane Windows
- Exterior Sheathing
- Foam Sealant Air Infiltration Barriers (All Windows & Doors)
- R-29 Roof Insulation
- 2x4 Sidewalls with R-11 Insulation
- Gas Furnace
- Positive Operating System
- 34" x 80" Decorator 6 Panel Steel Front Door w/Storm & Deadbolt
- 32" x 76" Cottage Rear Door

Exterior & Construction

- Nominal 3/12 Roof Pitch
- 8' Sidewall Height w/Flat Ceiling
- Rafters 24" O.C.
- 16" O.C. Floor Joists
- Tongue & Groove OSB Floor Decking
- R-11 Floor Insulation
- 5/8" Cresdek Decking
- Owens Corning 25 Year Shingled Roof
- Royal Double 4" Dutch Vinyl Lap Siding
- Ice & Water Barrier
- Residential Shutters on Door Side

Floor Coverings

- Minute Man Quarry Carpet
- 5 Pound Rebond Carpet Pad
- Beauflor Roll Goods
- Roll Goods in Baths, Kitchen, Dining Room, Utility & Foyer
- Tack Strip Carpet Installation in Living • Room, Bedrooms, Halls
- Carpet Bar where applicable

Plumbing

- Moen Single Lever with Shower Head
- Plumbing for Washer
- 30 Gallon Electric Water Heater
- 7" Deep Stainless Steel Kitchen Sink
- Single Lever Kitchen Faucet w/Sprayer
- Main Water Shutoff below Floor
- Water Heater Access Panel

Doors and Windows

- Easy Clean Tilt-Out Sash, Single-Hung Windows
- Kinro White Low-E Windows
- Dead Bolt Security Lock on Steel Front Door
- Wall Mounted Door Stops
- Triple Hinged Interior Doors
- Pre-Hung 6-Panel White Interior Doors
- Nickel Interior Door Knobs

Baths

- 1 Pc. Fiberglass Tub in Baths
- Pop-Up Drains on Bath Sinks w/Overflows
- Power Exhaust Fan
- Laminated Countertops
- Lav Mirrors with Clips
- Plastic Lav
- 3-Light Strip above Mirror

Appliances

- Black 18 CF Frost Free Refrigerator
- Black 30" Standard Gas Range
- 30" Power Range Hood

Cabinetry

- 30" Overhead Kitchen Cabinets
- Wrapped Face Frames/Wrapped Cabinetry/No Hardware/Shaker Style
- Shelf over Refrigerator with Beadboard
- Cabinet w/Doors over Range
- Adjustable Center Shelf in Overhead Cabinets
- Bank of Drawers
- Hidden Hinges
- Dove Tail Drawer Construction
- Side Mounted Drawer Guides
- Laminate Countertop
- Shelf in Washer Dryer Area

Décor

- 1/2" Decorative Vinyl on Gypsum Walls
- Textured Stippled Ceilings
- 2-1/2" Base, Door and Window Casing
- Mini Blinds Throughout
- Flat Moldings T/O
- Fabric Valances in Living Areas, Dining Room and Kitchen
- Foyer

Electrical

- Exterior GFI Weather Resistant
- Receptacle on Sidewall
- GFI Bath & Kitchen Receptacles
- Smoke Alarms
- Wire and Vent for Dryer
- Porch Light at Front & Rear Door
- Overhead Glass Light Fixtures in all Rooms

Harmony Homes | P.O. Box 27 | Nappanee, Indiana 46550

www.HomesFromHarmony.com

<http://www.youtube.com/user/HarmonyHomesVideos>

© 2017 HARMONY HOMES INC. ALL RIGHTS RESERVED

Important: Because we continually update and modify our products, it is important for you to know that our brochures and literature are for illustrative purposes only. ILLUSTRATIONS MAY SHOW OPTIONAL FEATURES. All information contained herein may vary from the actual home we build. Dimensions are nominal length and width measurements are from exterior wall to exterior wall. We reserve the right to make changes at any time, without notice or obligation, in prices, colors, materials, specifications, features and models. Please check with your retailer for specific information about the home you select.