



# ROCHESTER

HOMES



## Ranch Guide

# Our Standard Features

## **HOUSE FLOOR WIDTH & ROOF**

Floor width 30', 28', 26' per print, increase length & width optional Floor crawl space model, basement prep available  
Roof truss 6/12 24" oc 50lb roof load, (available 9/12), 16" oc available  
Roof eave and rake 10"  
Roof sheathing 7/16"  
Roof sub fascia 2x6  
Roof attic access  
Ceiling drywall 5/8"

**ADVANTAGE 26' WIDE ONLY**

**ADVANTAGE 6/12 ROOF PITCH ONLY**

## **STRUCTURAL**

Floor joist 2x10 16" oc #2 SPF or better  
Floor deck 3/4" Tongue & Groove, screwed and glued, Cut back at mate line  
Floor band joist doubled sidewall, mate line  
Ceiling 8' height throughout (available 9')  
Walls exterior 2x6 16" oc, double top plate, 1/2" drywall  
Walls interior 2 x 4 16" oc 1/2 drywall  
Walls mate ine 2x3 16" oc 1/2 drywall  
Walls exterior sheeted W/ 7/16 osb side end & mate line

**ADVANTAGE 8' CEILING HEIGHT ONLY**

**ADVANTAGE 24" O.C. WALLS INTERIOR**

## **HEATING**

Heat register and boots  
Main Duct and furnace not provided std. (see options)

## **PLUMBING**

1/2" PEX supply lines stubbed through floor per code  
PVC drain lines stubbed through floor  
Shut offs all exposed supply lines  
Freeze proof faucet installed  
Kohler single lever faucets, vanity, tubs, kitchen sink-lifetime warranty Kohler spray attachment kitchen sink  
Kohler stainless steel sink kitchen  
Proflo elongated commode and tank  
China lavs with overflows  
Fiberglass tub & shower/enclosures, per print  
All network of plumbing not included under floor (some available)

## **ELECTRICAL**

200 amp Siemen service panel 40/40  
Copper romex 12-2 wire all general circuits  
Copper romex wire other circuits sized accordingly  
Ground fault protection per code  
Arc fault protection all bedrooms  
220V provided for dryer per plan  
Smoke and carbon monoxide detectors per code  
Switched receptacle in living room  
3 way switches per plan  
Ceiling lights, double bulb, all rooms except living room  
LED Recessed flush mount canister lights in kitchen  
Porch lights by all exterior doors  
Pendant lights over mirror all baths  
Broan light vent combination all baths  
Range hood with light  
Attic light  
Door chime front door  
One Telephone jack, choose from suggested locations  
Outside recept front and rear  
Tamper resistant recepts  
All UTL circuits GFCI, all KIT circuits ARC fault AFCI, DW GFCI protected

**ADVANTAGE OPTION 220V FOR DRYER**

**ADVANTAGE 14-2 WIRE ALL GENERAL CIRCUITS**

## **EXTERIOR FINISH, WINDOW, DOOR & INSULATION**

Tyvek House wrap around entire house  
Ice dam protection eaves  
R-21 paperback batt insulation all exterior walls  
R38 blown attic insulation  
Vinyl 4x4 siding, prepped for sill plate fastening  
Vented vinyl soffit  
Aluminum fascia  
Owens Corning TruDefinition Duration shingles-limited  
Lifetime warranty  
Andersen Silverline single hung windows (see Window Options)  
Vinyl casement window over kitchen sink per plan  
Grids between glass  
Tip out sash Low E2 Argon filled glass with Passive Solar glazing  
15" louvered shutters all windows  
Dead bolts keyed alike  
Th ermatru F iberglass front door peep hole and knocker 3'0" X 6'8" with lever action Schlage lockset  
Thermatru Steel rear door 20 minute fire rated 2'8" X 6'8" with lever action Schlage lockset  
Caulking under all exterior walls

**ADVANTAGE SHUTTERS FRONT ONLY**

## **CABINET**

Merillat Spring Valley Oak or Marlin recessed panel per plan  
Crown molding over all wall cabinets  
Wall cabinets over washer and dryer, per plan  
Lazy susans in corner plan  
Raised angle wall cabinet in corner per plan  
Raised Pantry Cabinet per plan  
Bank of drawers in base cabinets - bathrooms  
Post form laminate counters with back splash

**ADVANTAGE SHELF OVER W/D**

## **INTERIOR DOOR AND TRIM**

6 panel interior doors oak embossed finish 32" where applicable  
Wood base and door casing oak embossed finish  
Mortised hinges all doors  
Lever action passage and privacy locksets  
Wood casing and jamb with oak embossed finish all windows  
2 1/4" mirror trim stained to match door/window trim color  
All interior decorative wood components added will match trim color

## **FLOOR COVERING**

FHA certified wear-dated Anso nylon carpet 35 oz. ship loose  
Not installed  
5 lb rebond carpet pad ship loose  
16 x 16 vinyl tile installed in the kitchen, baths, utility, foyer & morning room, per plan  
**ADVANTAGE HARD SURFACE VINYL ROLL GOODS**  
**ADVANTAGE 16 OZ CARPET SHIPPED LOOSE**  
**ADVANTAGE VINYL ROLL GOODS INSTALLED IN THE KITCHEN, BATHS, UTILITY AND FOYER PER PLAN**

## **INTERIOR FINISH**

Smooth wall finish painted white with hi-build primer  
Stipple finish ceiling painted white with hi-build primer  
Flush transition at ceiling line no beam  
Epoxy coated wire shelves closets  
Closet organizer system in Bedroom 1 walk in closets, per print

## **APPLIANCES**

Range hood over stove area  
No appliances standard

## **WARRANTY**

One year, 10 year structural as described on web page [www.rochesterhomesinc.com](http://www.rochesterhomesinc.com) (ID102006)

The Rochester series is our flagship line of customizable homes that come in several different sizes and combinations of units. We take pride in the Rochester series being built to the highest quality standards, offering many desirable options, and being the most valuable home you can build. All of the 26', 28' & 30' wide floor plans shown in this book are available in the Rochester series. Custom floor plans are our specialty.

## **THE ADVANTAGE SERIES**

The Advantage series is designed to give you the quality of a Rochester modular home while saving you thousands of dollars on your total project. By offering these plans in only one size, 26' wide, and by grouping and offering fewer options, we are able to cut costs from production. The end result is one of the highest quality modular homes for the most competitive price. All of our 26' wide plans are available in the advantage series.

# Model Specification Index


MODEL NAME	MODEL #	Std. Sq Ft	Beds	Baths	Widths	Page
Rudy	R32-26	936	2	1	26ft, 28ft, 30ft	4
American	R31-26	1,040	2	2	26ft, 28ft, 30ft	5
Jefferson	R34-26	1,144	2	2	26ft, 28ft, 30ft	6
Madison	R37--26	1,144	3	2	26ft, 28ft, 30ft	7
Wayne	R44-26	1,144	3	2	26ft, 28ft, 30ft	8
Canton	R45-26	1,248	3	2	26ft, 28ft, 30ft	9
Liverpool	R27-26	1,248	3	2	26ft, 28ft, 30ft	10
Phoenix	R4-26	1,248	3	2	26ft, 28ft, 30ft	11
Heritage	R29-26	1,352	3	2	26ft, 28ft, 30ft	12
Sidney	R38-26	1,352	2	2	26ft, 28ft, 30ft	13
Davenport	R39-26	1,352	3	2	26ft, 28ft, 30ft	14
Brentwood	R35-26	1,352	3	2	26ft, 28ft, 30ft	15
Newport	R8-26	1,352	3	2	26ft, 28ft, 30ft	16
Beaver Creek	R10-26	1,352	3	2	26ft, 28ft, 30ft	17
Elkins	R46-26	1,560	3	2	26ft, 28ft, 30ft	18
St Paul	R40-26	1,560	3	2	26ft, 28ft, 30ft	19
Carrington	R17-26	1,560	3	2	26ft, 28ft, 30ft	20
Lakeland	R41-26	1,664	4	2	26ft, 28ft, 30ft	21
Kimberly	JR40-30	1,240	2	1	30ft	24
Silver Grove	R42-28	1,402	2	2	28ft, 30ft	25
Jamestown	R11-28	1,344	3	2	28ft, 30ft	26
Lincoln	JR36-30	1,480	3	2	30ft	27
Sandusky Series	JR43-30 EJR43-30	1,560 2,010	2 2	2 4	30ft 30ft	28 29
Joseph Series	JR24-30 EJR24-30	1,560 1,868	3 4	2 2	30ft 30ft	30 31
Dublin Series	JR41-30 EJR41-30	1,560 2,010	3 4	2 4	30ft 30ft	32 33
Adelaide Series	JR35-30 EJR35-30 EJR35A-30	1,560 2,010 2,010	3 5 3	2 3 2	30ft 30ft 30ft	34 35
Davis Series	R30-28 ER30A-28 ER30-28	1,456 1,876 1,764	3 3 4	2 2 2	28ft, 30ft 28ft, 30ft 28ft, 30ft	36 37
Gallery Series	R25-28 ER25-28	1,605 1,913	3 4	4 2	28ft, 30ft 28ft, 30ft	38 39
Albany Series	JR9-30 JR9A-30	1,680 1,840	3 3	2 2	30ft 30ft	42 43
Townsland	JR39-30	1,600	3	2	30ft	44
Alice Springs	JR33-30	1,760	3	2	30ft	45
Allen Towne Series	JR22-30 JR22A-30	1,680 1,920	3 4	2 2	30ft 30ft	46 47
Douglas	JR34-30	1,720	3	2	30ft	48
Victoria	JR31-30	1,840	3	2	30ft	49
Roosevelt Series	EJR4A-30 JR4A-30	2,228 1,920	4 3	2 2	30ft 30ft	50 51
Patriot Series	JR13-30 EJR13-30	1,920 2,228	3 4	2 2	30ft 30ft	52 53
Hobart	JR29-30	1,920	3	2	30ft	54
Independence	JR8-30	2,000	3	2	30ft	55
Mason	JR42-30	1,900	2	2	30ft	56
Perth	JR27-30	2,000	3	2	30ft	57
Norwood	EJR35B-30	2,010	4	3	30ft	58
Radford	EJR44-30	2,150	3	2	30ft	59
Brisbane	JR26-30	2,280	4	3	30ft	60

Available in the Advantage Series

# The Advantage Savings Package

If you are looking to save money without compromising on quality, you might consider Rochester's Advantage Ready Plans. Choosing an Advantage Ready Plan is a simple, streamlined way for you to get into a new home while not busting your budget. Advantage Ready Plans come with a few guidelines, outlined here.





# YOU

- Choose from any of our plans that are available in a 26' width with the Advantage Ready logo.
- Choose from a select group of our most popular colors and options.
- Feel confident that you are getting a quality-built home with little specification differences.

# WE

- Ensure that efficiencies are gained in design and in production time.
- Offer the same quality assurances and process controls as in any other home built by Rochester Homes.
- Pass the savings directly to you in the basic home price.

**Want to learn more?**

**Just ask your builder for additional information.**

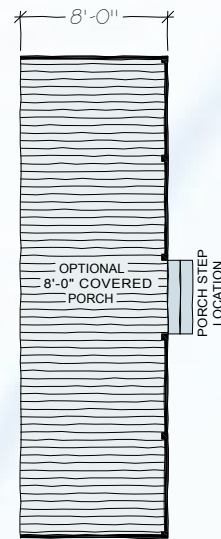
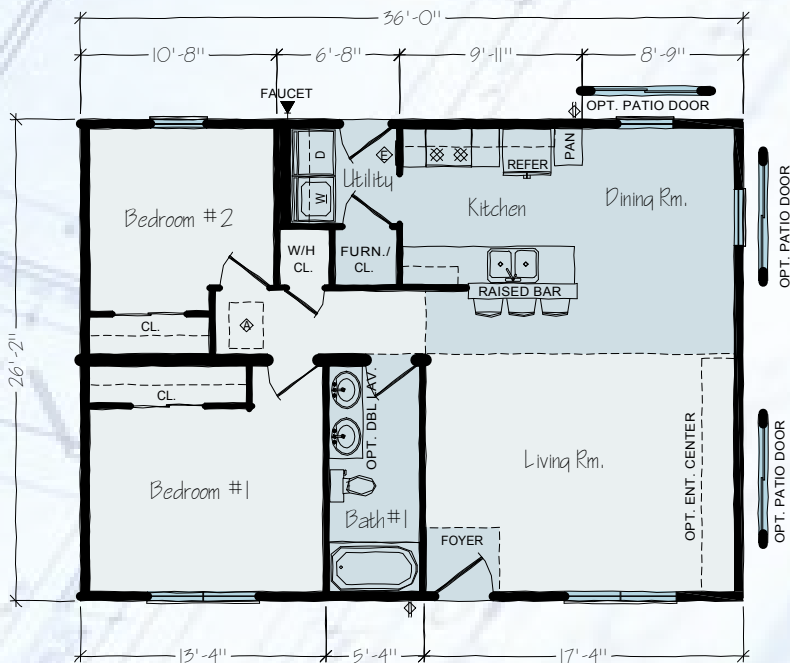
# RUDY



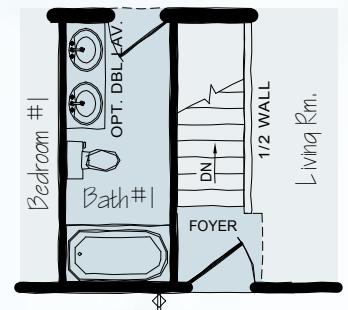
• 936 SQ FT • 2 BR • 1 BA

Model R32-26

## FIRST FLOOR



## OPTIONS



OPT. BASEMENT STAIRWELL LAYOUT

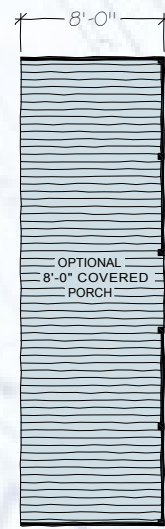
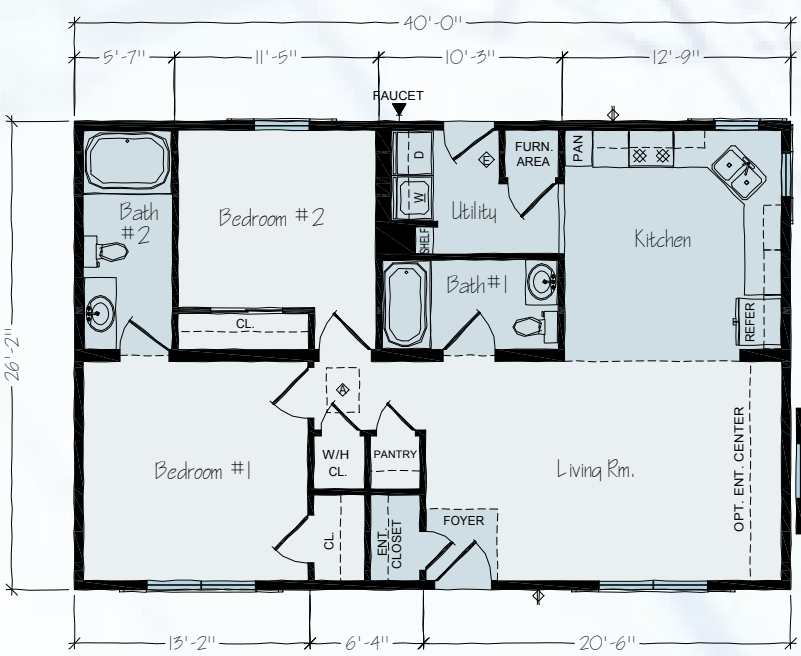


# AMERICAN



Model R31-26 • 1,040 SQ FT • 2 BR • 2 BA

## FIRST FLOOR



## OPTIONS



OPT. BASEMENT STAIRWAY LAYOUT





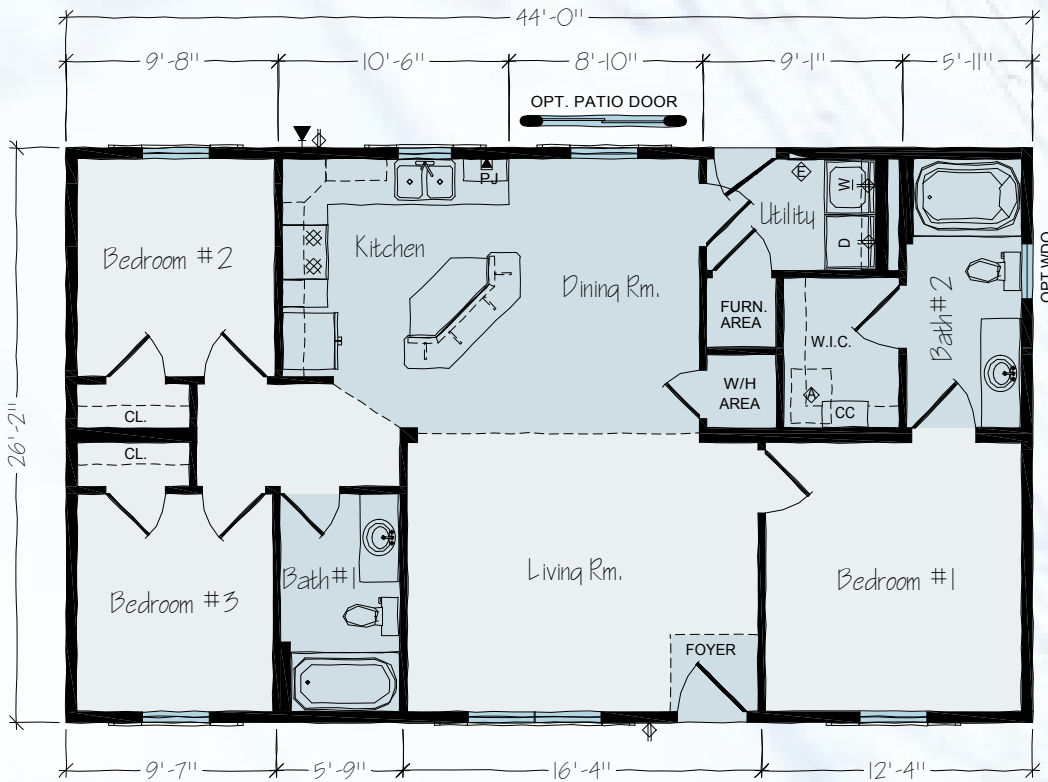


# MADISON

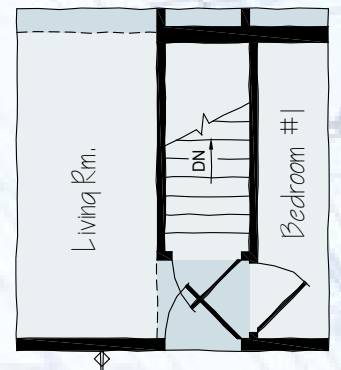


Model R37-26 • 1,144 SQ FT • 3 BR • 2 BA

## FIRST FLOOR



## OPTIONS



BASEMENT OPTION



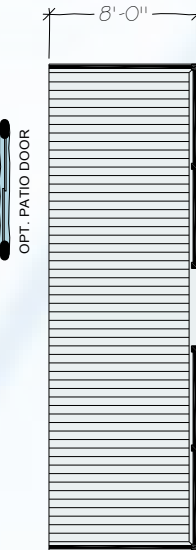
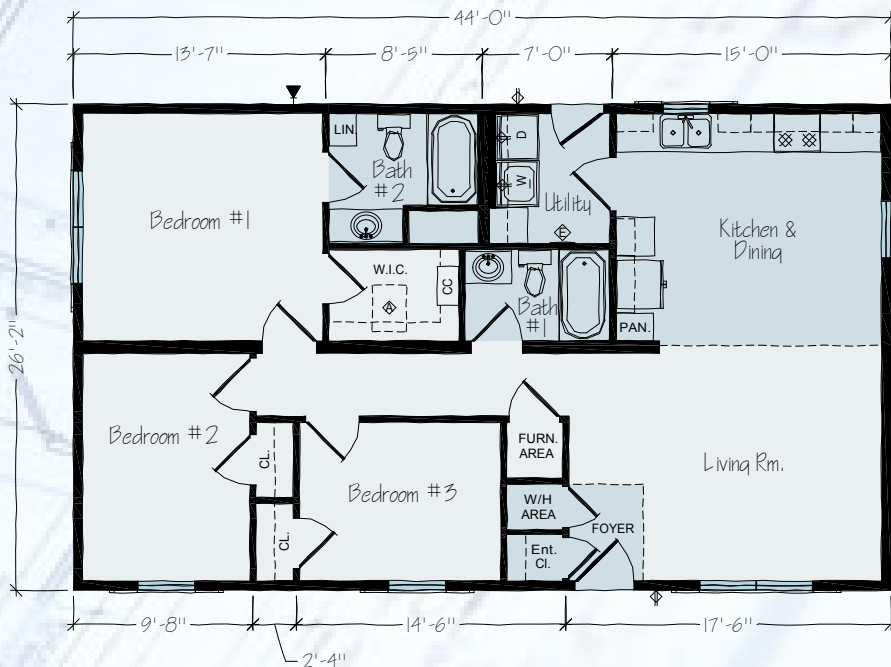
# WAYNE



• 1,144 SQ FT • 3 BR • 2 BA

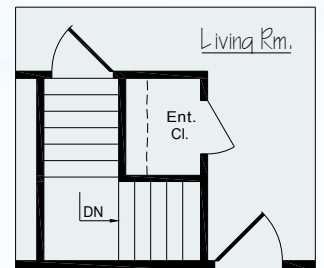
Model R44-26

## FIRST FLOOR



OPT. PORCH

## OPTIONS



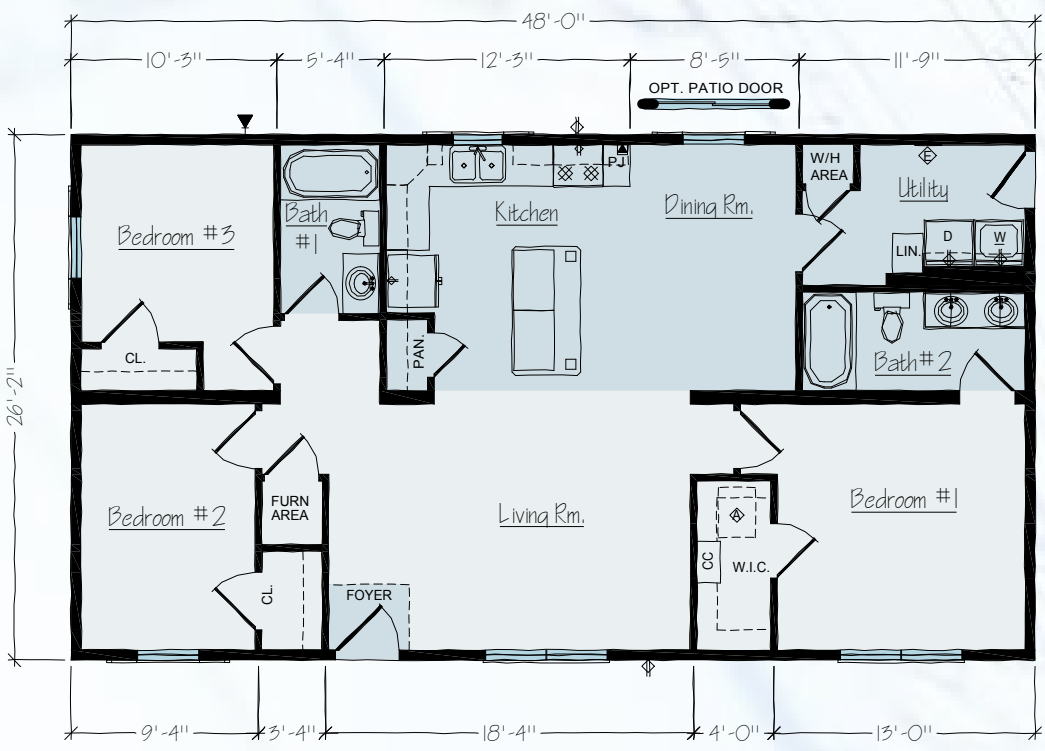
BASEMENT OPTION

# CANTON

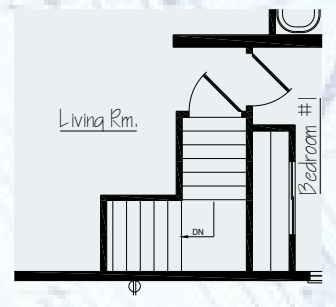


Model R45-26 • 1,248 SQ FT • 3 BR • 2 BA

## FIRST FLOOR



## OPTIONS



BASEMENT OPTION



# LIVERPOOL



• 1,248 SQ FT • 3 BR • 2 BA

Model R27-26

## FIRST FLOOR



## OPTIONS



OPT. BASEMENT STAIRWAY LAYOUT

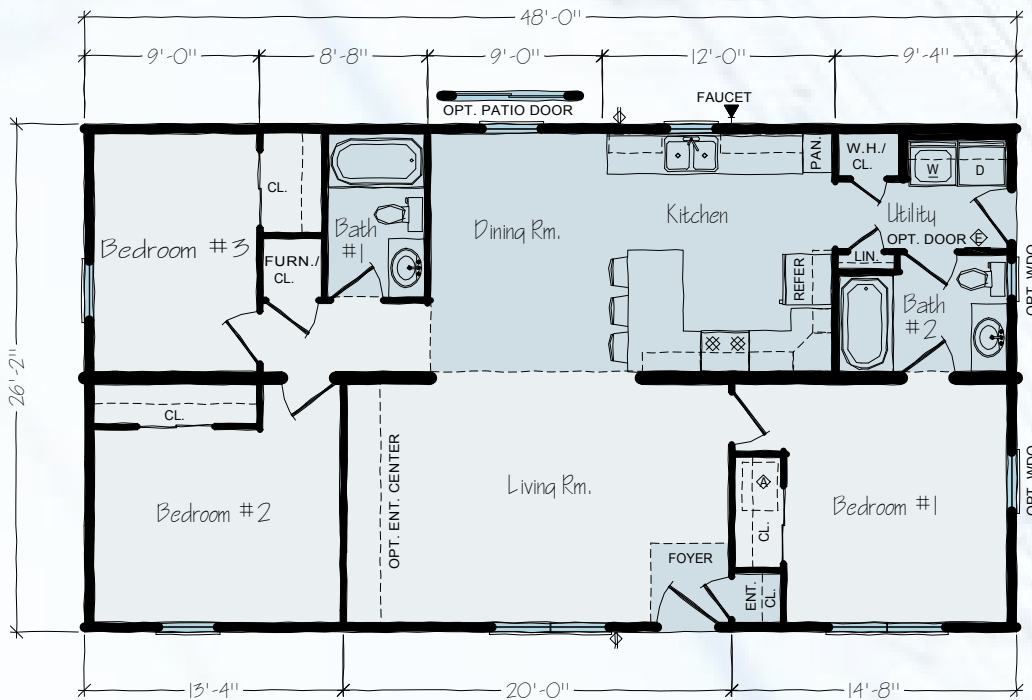
**Advantage**

# PHOENIX

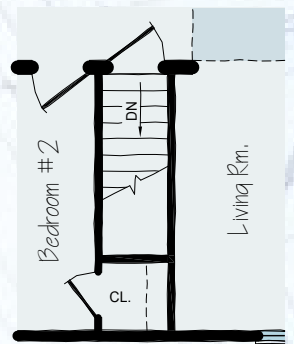


Model R4-26 • 1,248 SQ FT • 3 BR • 2 BA

## FIRST FLOOR



## OPTIONS



OPT. BASEMENT STAIRWELL LAYOUT



# HERITAGE



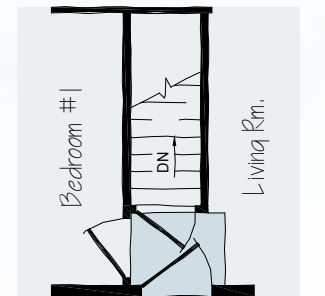
• 1,352 SQ FT • 3 BR • 2 BA

Model R29-26

## FIRST FLOOR



## OPTIONS



OPT. BASEMENT STAIRWAY LAYOUT



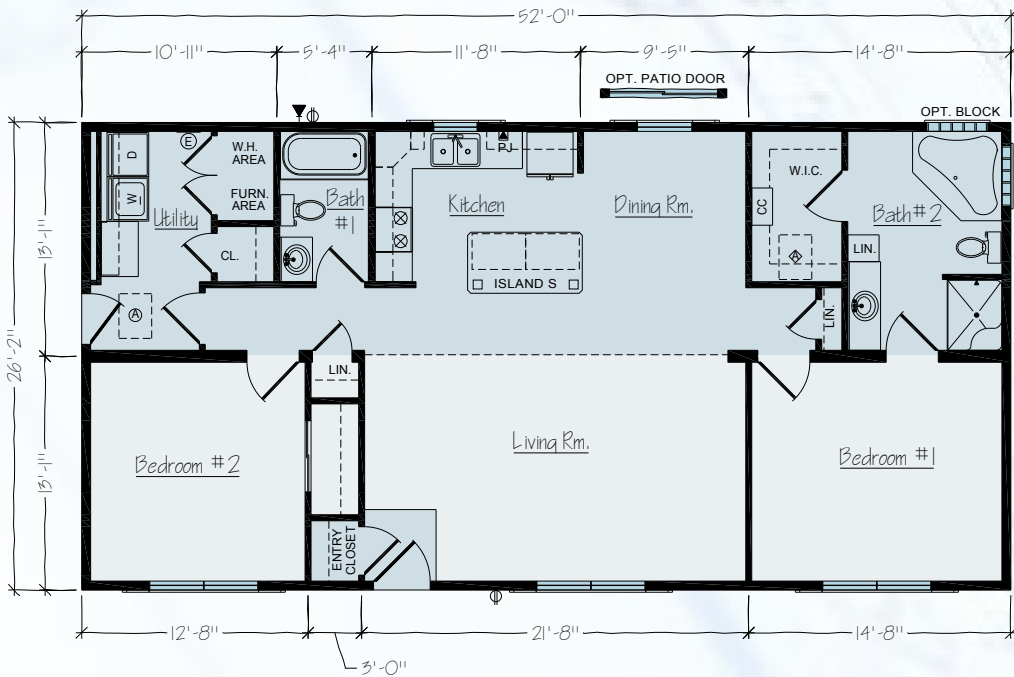
# SIDNEY



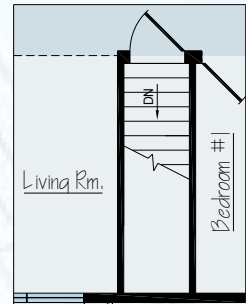
Model R38-26

• 1,352 SQ FT • 2 BR • 2 BA

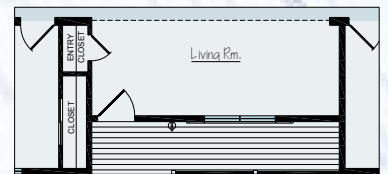
## FIRST FLOOR



## OPTIONS



## OPTIONAL STAIRS



## OPTIONAL PORCH

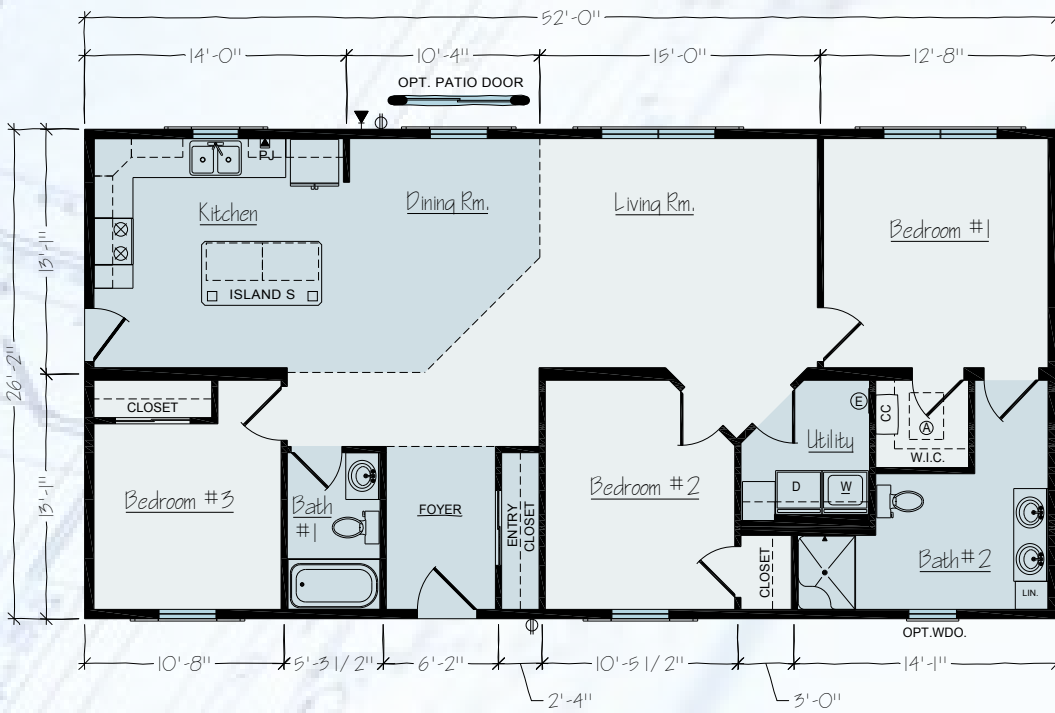


# DAVENPORT

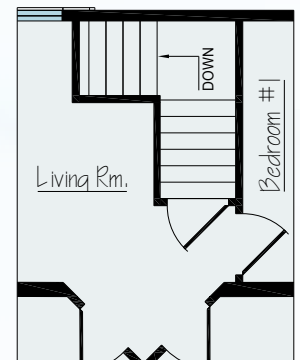


• 1,352 SQ FT • 3 BR • 2 BA Model R39-26

## FIRST FLOOR



## OPTIONS



BASEMENT OPTION



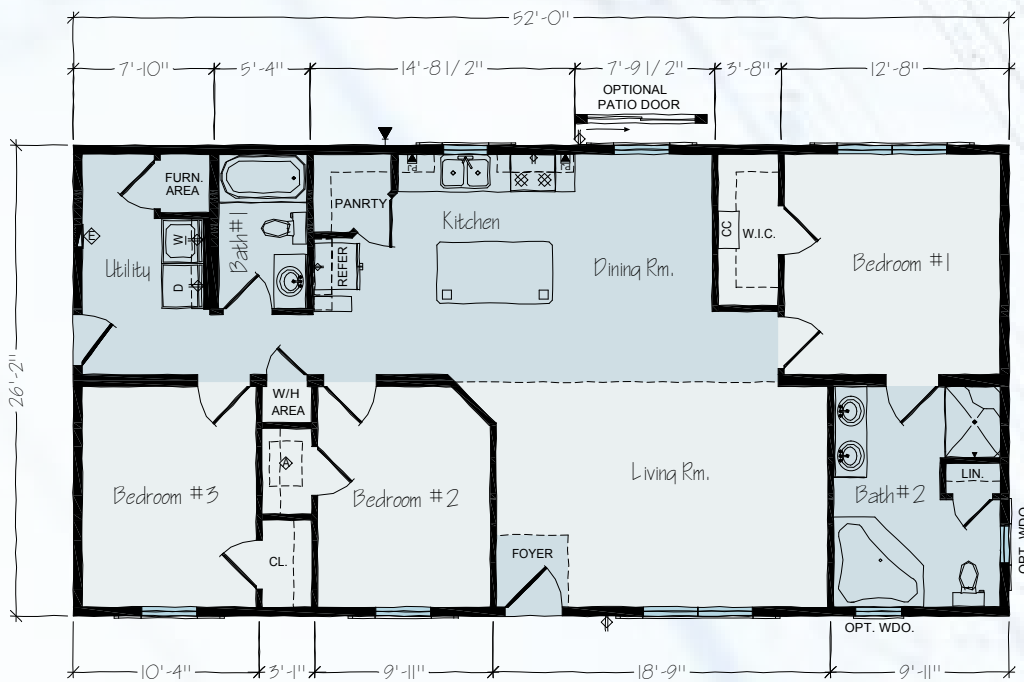


# BRENTWOOD

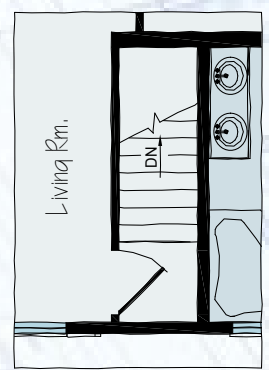


Model R35-26 • 1,352 SQ FT • 3 BR • 2 BA

## FIRST FLOOR



## OPTIONS



BASEMENT OPTION



# NEWPORT

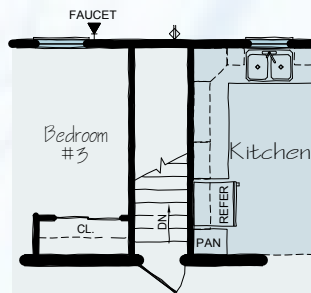
• 1,352 SQ FT • 3 BR • 2 BA

Model R8-26

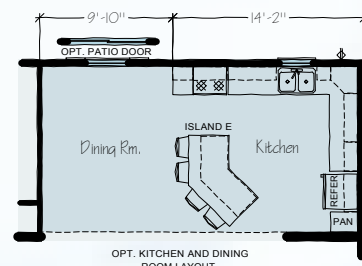
## FIRST FLOOR



## OPTIONS



OPT. BASEMENT STAIRWELL LAYOUT



OPT. KITCHEN AND DINING ROOM LAYOUT

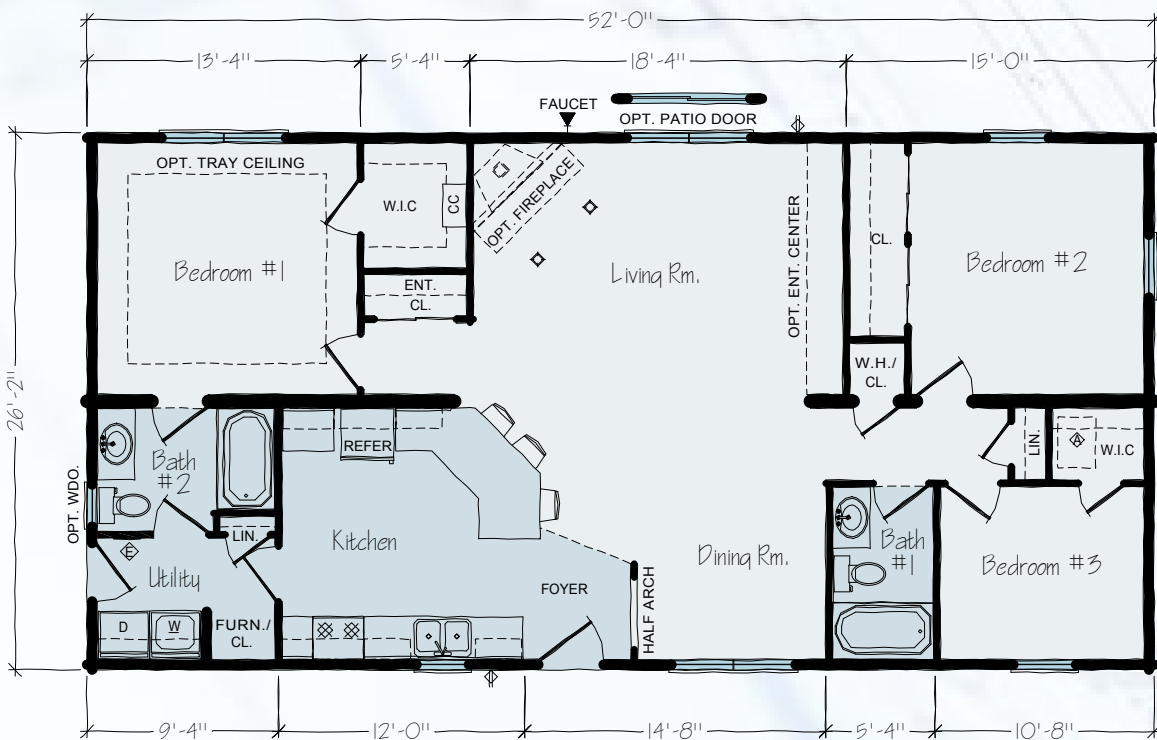
**Advantage**

# BEAVER CREEK

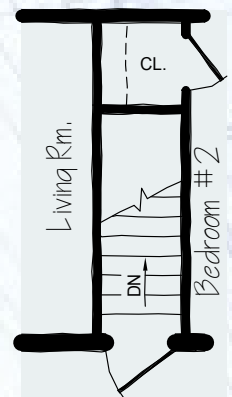


Model R10-26 • 1,352 SQ FT • 3 BR • 2 BA

## FIRST FLOOR



## OPTIONS



OPT. BASEMENT STAIRWELL LAYOUT



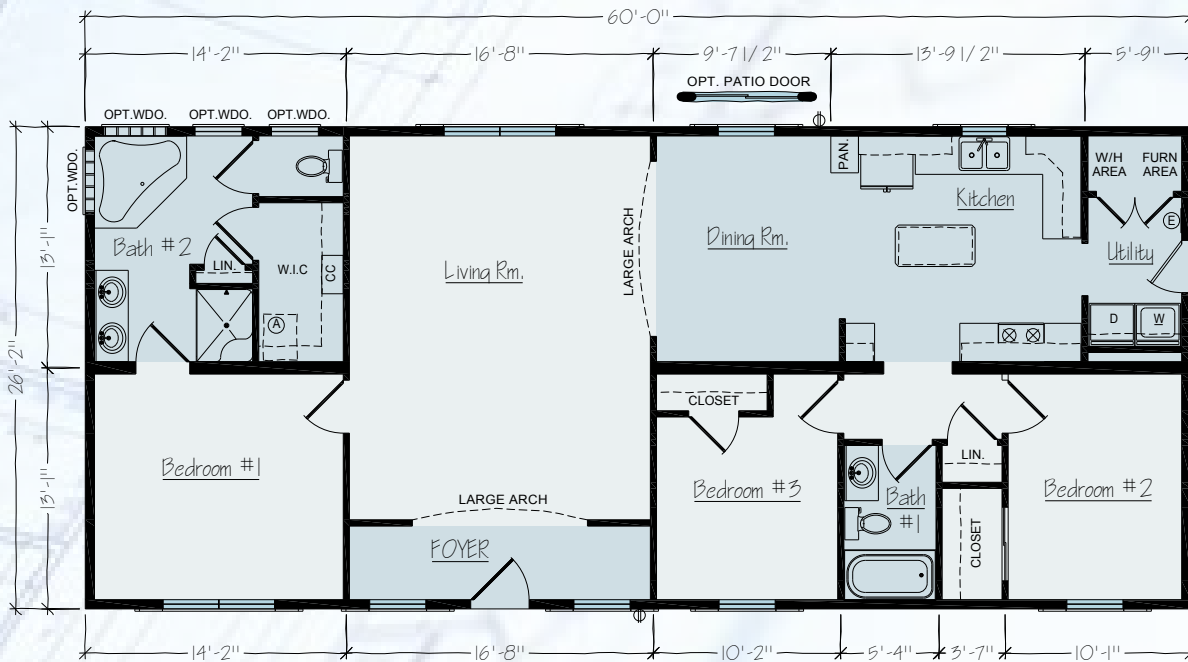
# ELKINS



• 1,560 SQ FT • 3 BR • 2 BA

Model R46-26

## FIRST FLOOR



## OPTIONS



BASEMENT OPTION



# ST PAUL

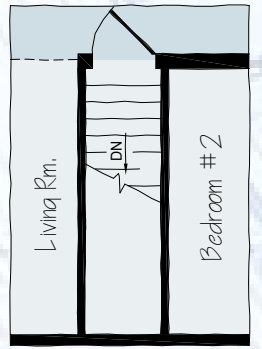


Model R40-26 • 1,560 SQ FT • 3 BR • 2 BA

## FIRST FLOOR



## OPTIONS



BASEMENT OPTION



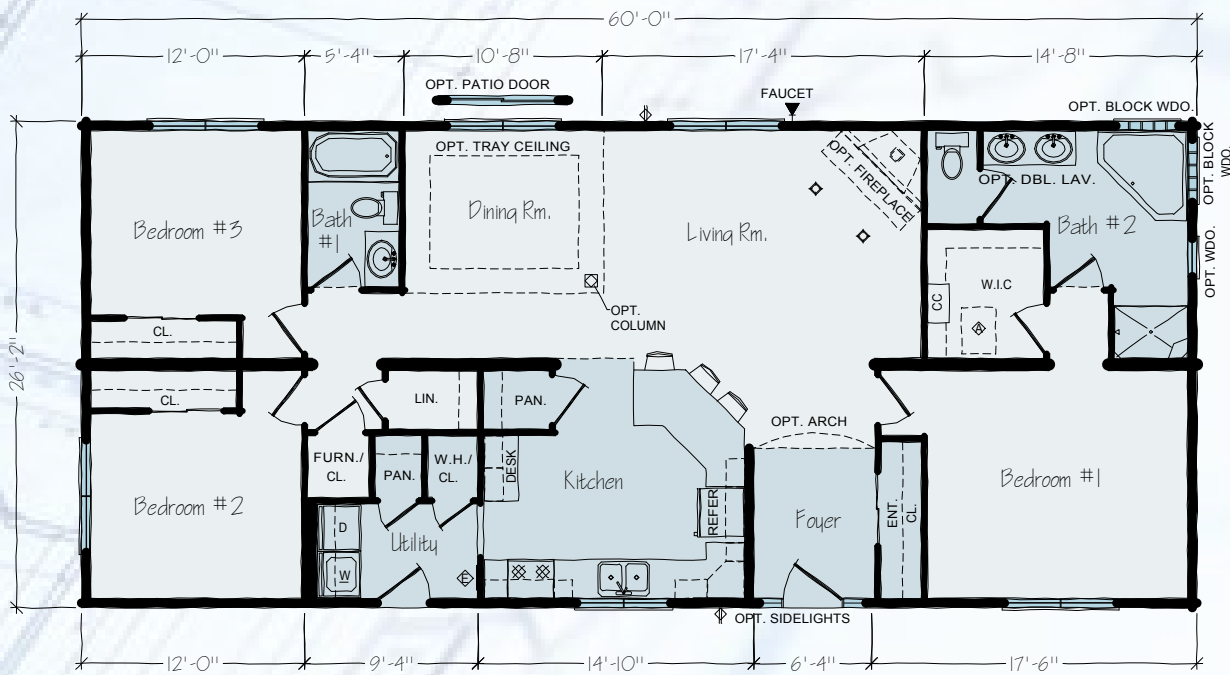
# CARRINGTON



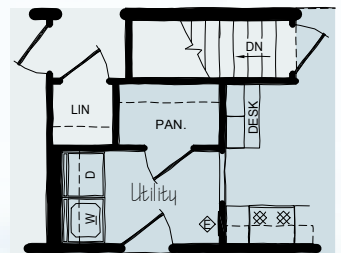
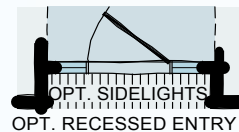
• 1,560 SQ FT • 3 BR • 2 BA

Model R17-26

## FIRST FLOOR



## OPTIONS



OPT. BASEMENT STAIRWELL LAYOUT

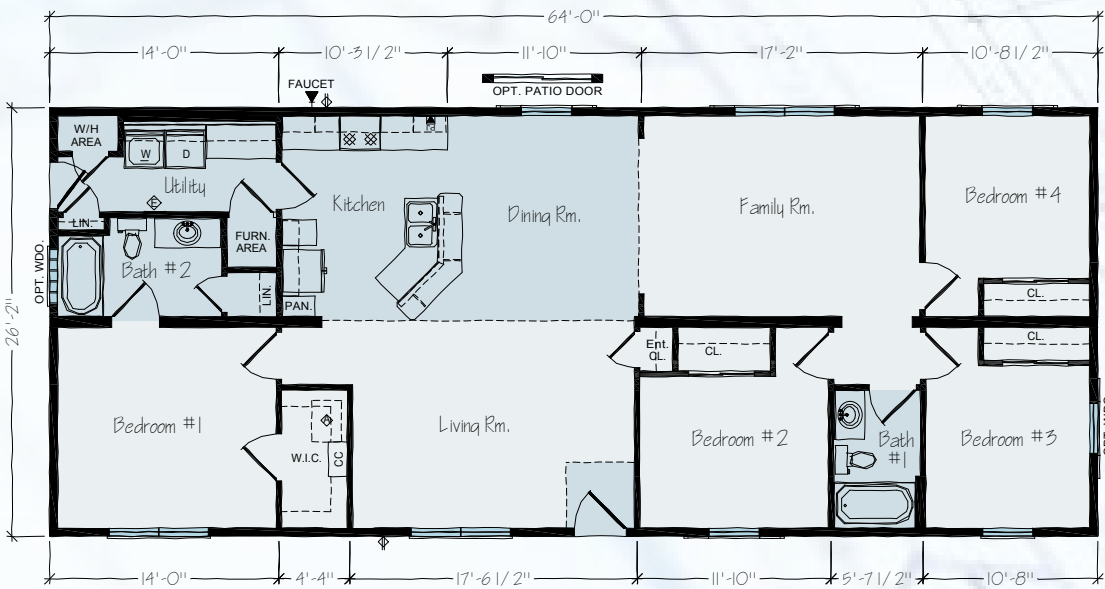


# LAKELAND

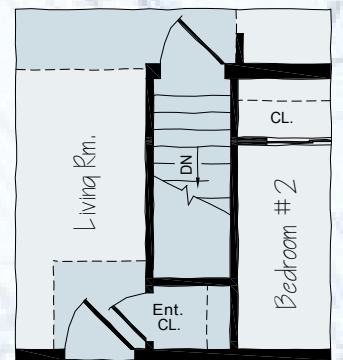


Model R41-26 • 1,664 SQ FT • 4 BR • 2 BA

## FIRST FLOOR

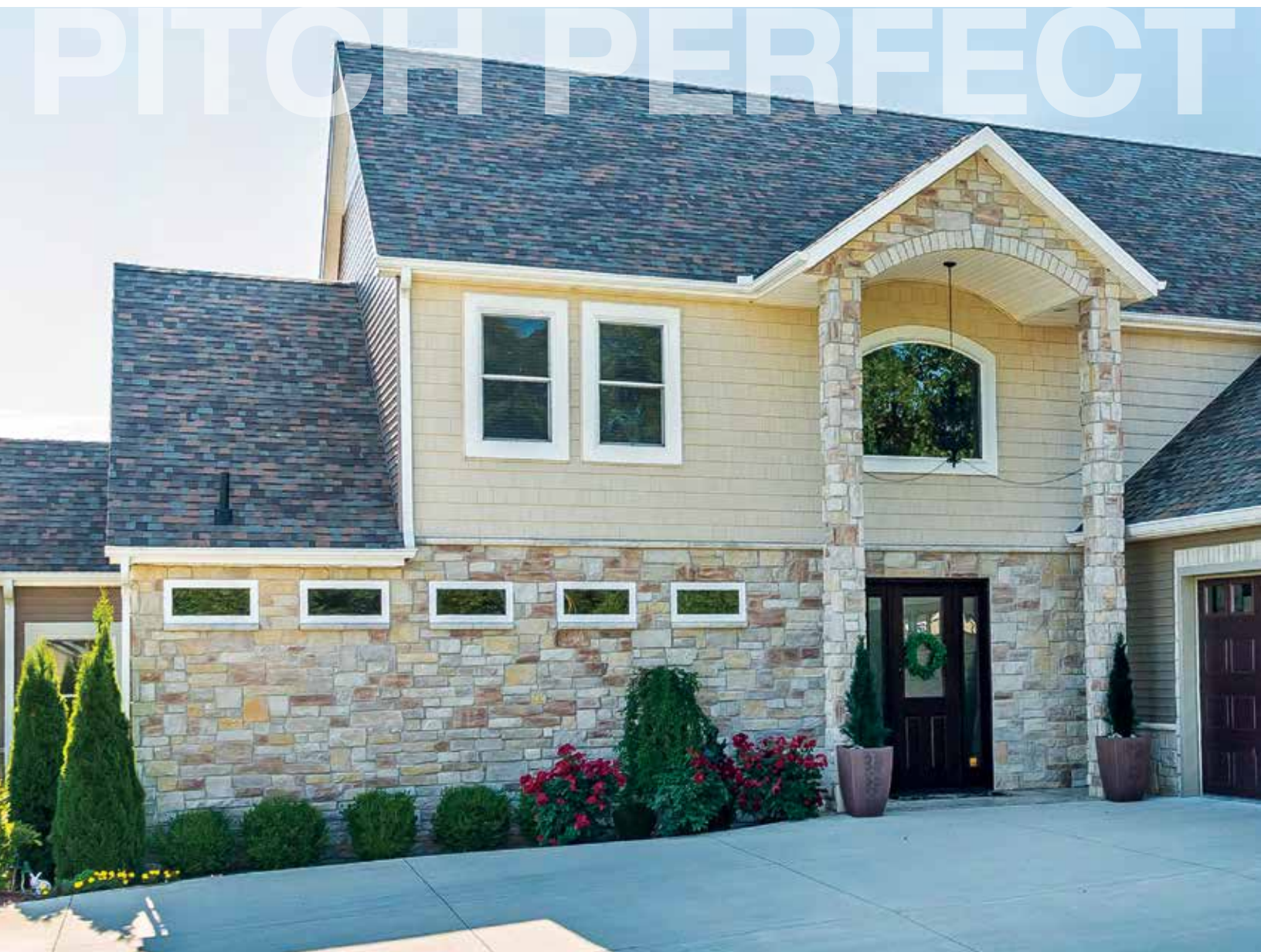


## OPTIONS



BASEMENT OPTION





## Add a Distinctive Style

Your choice in roof pitch can add a distinctive style and character to your home. Any of the roof pitches shown below can be considered or used on any of the floor plans Rochester Homes offers.



# Roof Treatments



## 6/12 Pitch

- Dutch gables and/or bump-out options are available in this roof pitch
- Very affordable roof solution



## 9/12 Pitch

- Dutch gables and/or bump-out options are available in this roof pitch
- Shed Dormer option available
- Gable Dormer option available
- Attic storage option available
- Up-stairs bonus living area option available with egress
- Open-from-below option available



## 12/12 Pitch

- Shed Dormer option available
- Gable Dormer option available
- Up-stairs storage available
- Large up-stairs living, bedroom and bath area available for onsite finishing, now or later.
- Open-from-below option available

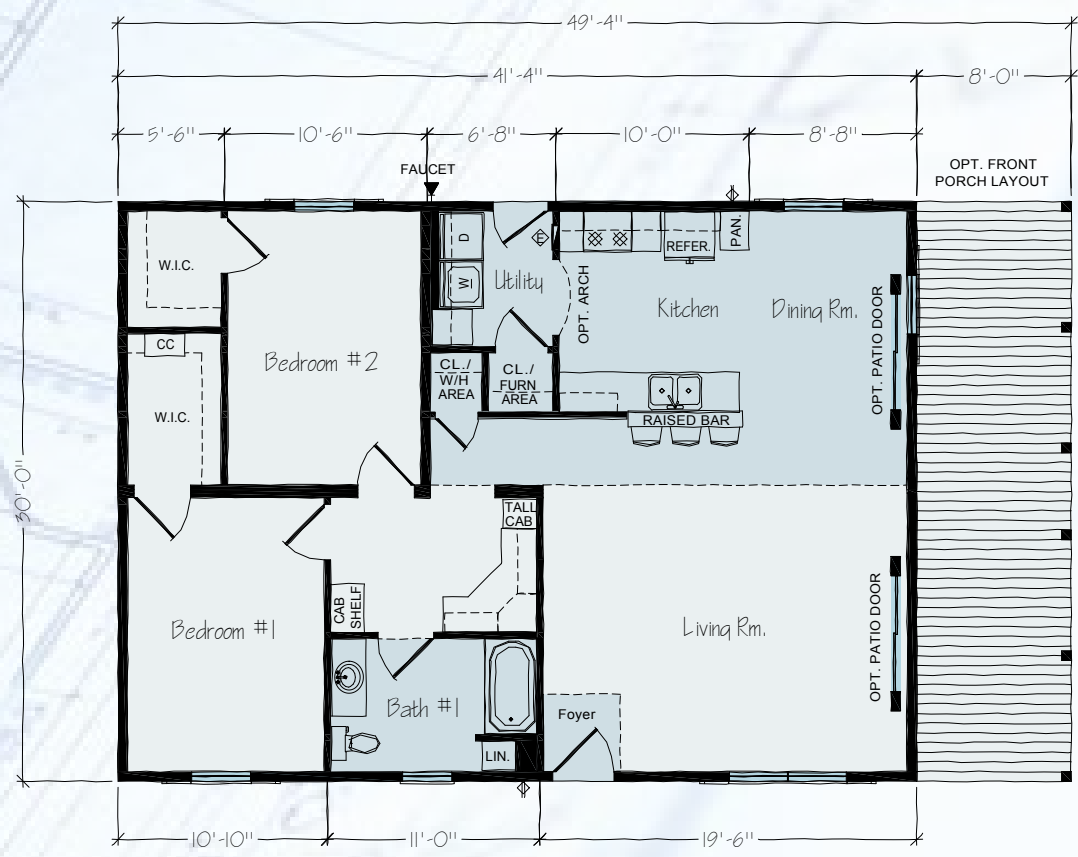
# KIMBERLY



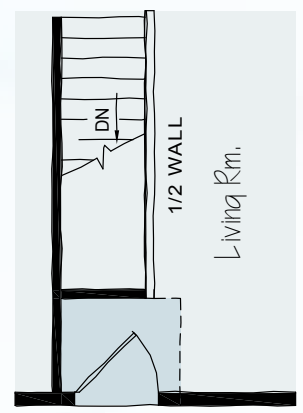
• 1,240 SQ FT • 2 BR • 1 BA

Model JR40-30

## FIRST FLOOR



## OPTIONS

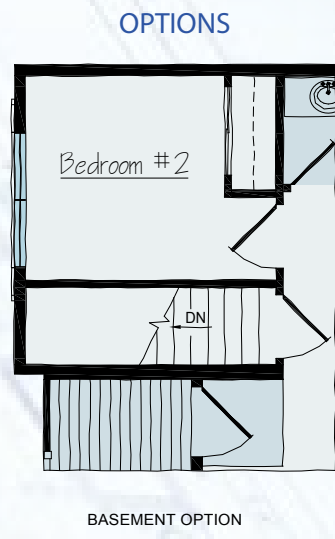
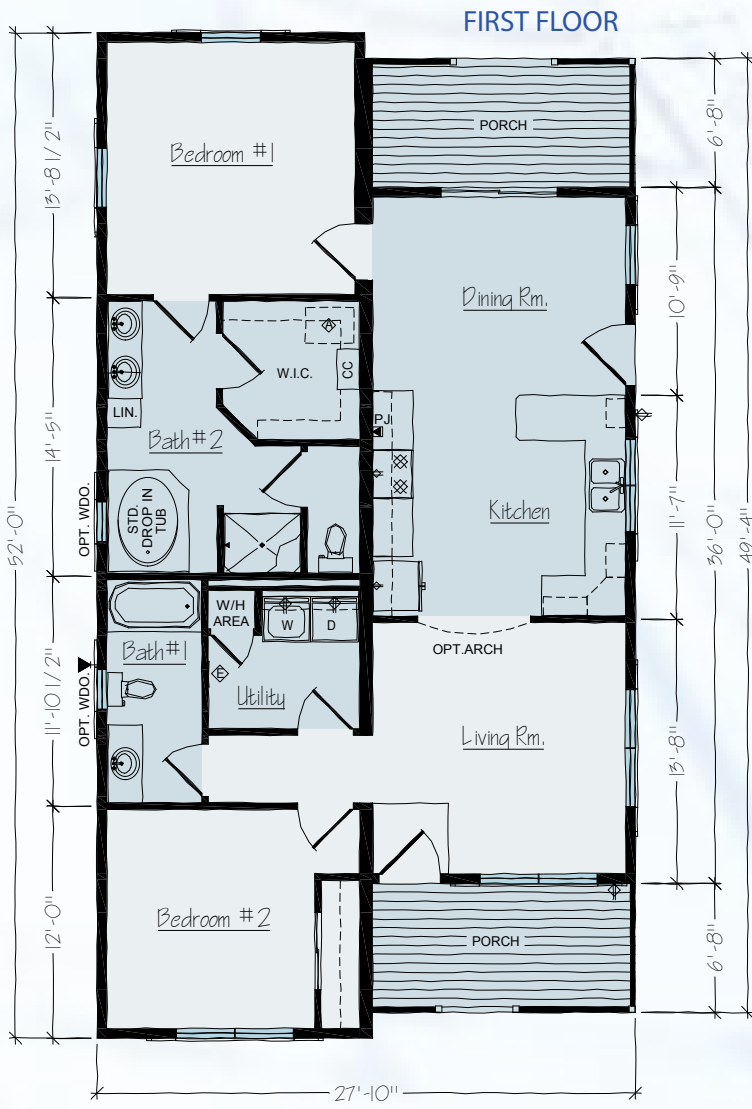


OPT. BASEMENT STAIRS

# SILVER GROVE



Model R42-28 • 1,402 SQ FT • 2 BR • 2 BA

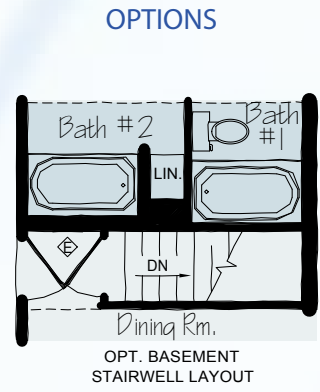
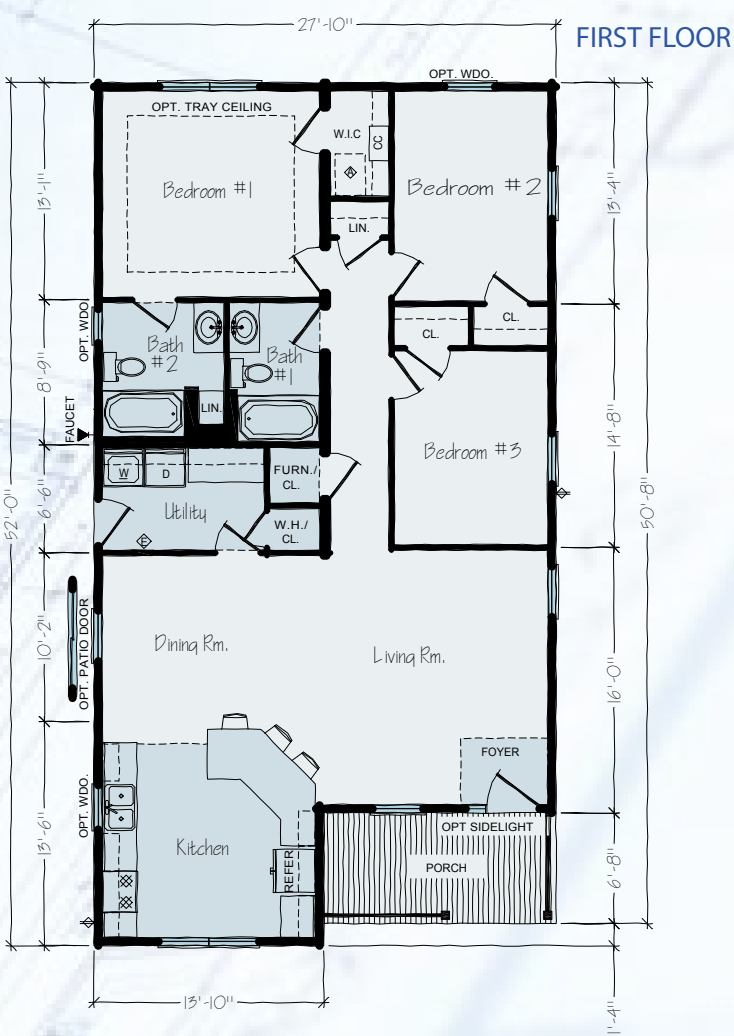


# JAMESTOWN



• 1,344 SQ FT • 3 BR • 2 BA

Model R11-28

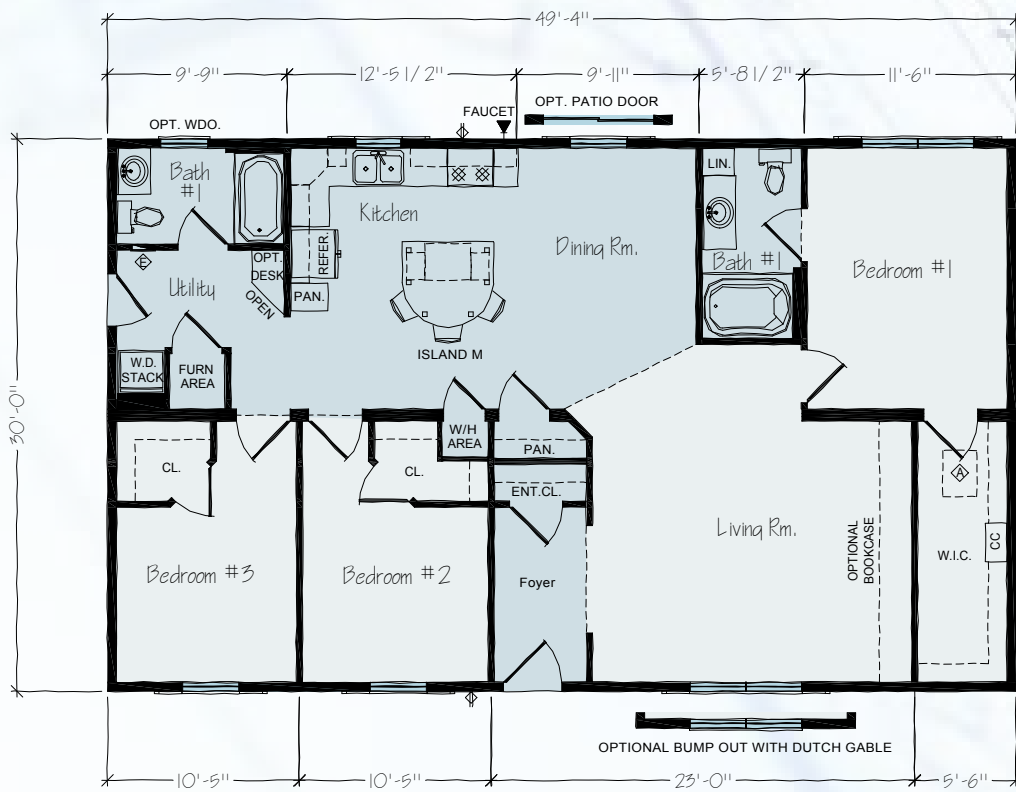


# LINCOLN



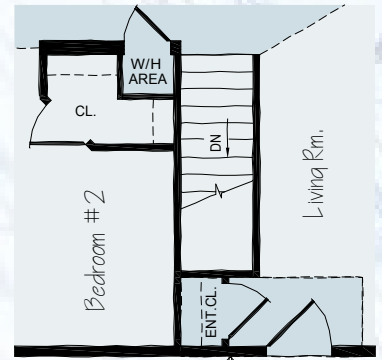
Model JR36-30 • 1,480 SQ FT • 3 BR • 2 BA

## FIRST FLOOR



OPTIONAL BUMP OUT WITH SHED OR GABLE ROOF

## OPTIONS



OPT. BASEMENT STAIRS

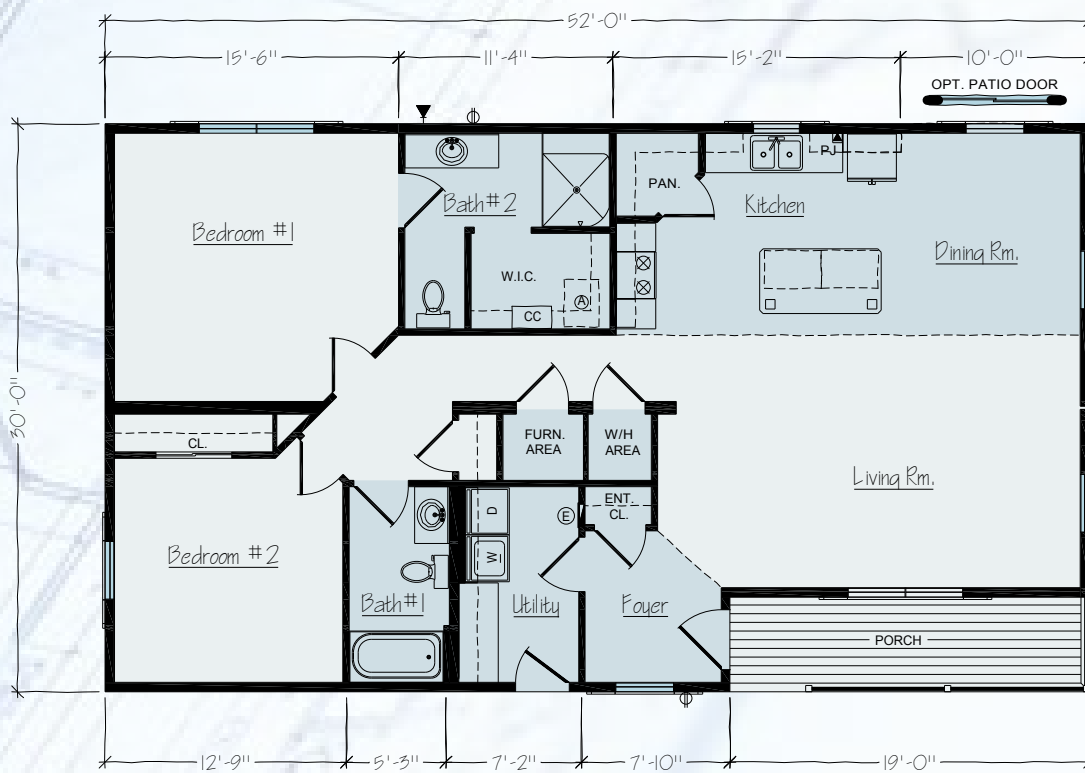
# SANDUSKY SERIES



• 1,560 SQ FT • 2 BR • 2 BA

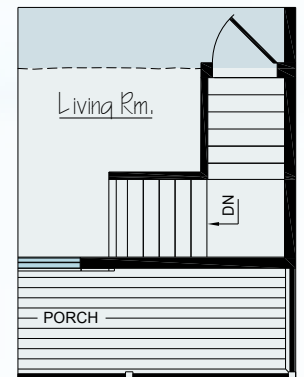
Model JR43-30

## FIRST FLOOR



OPT. PATIO DOOR

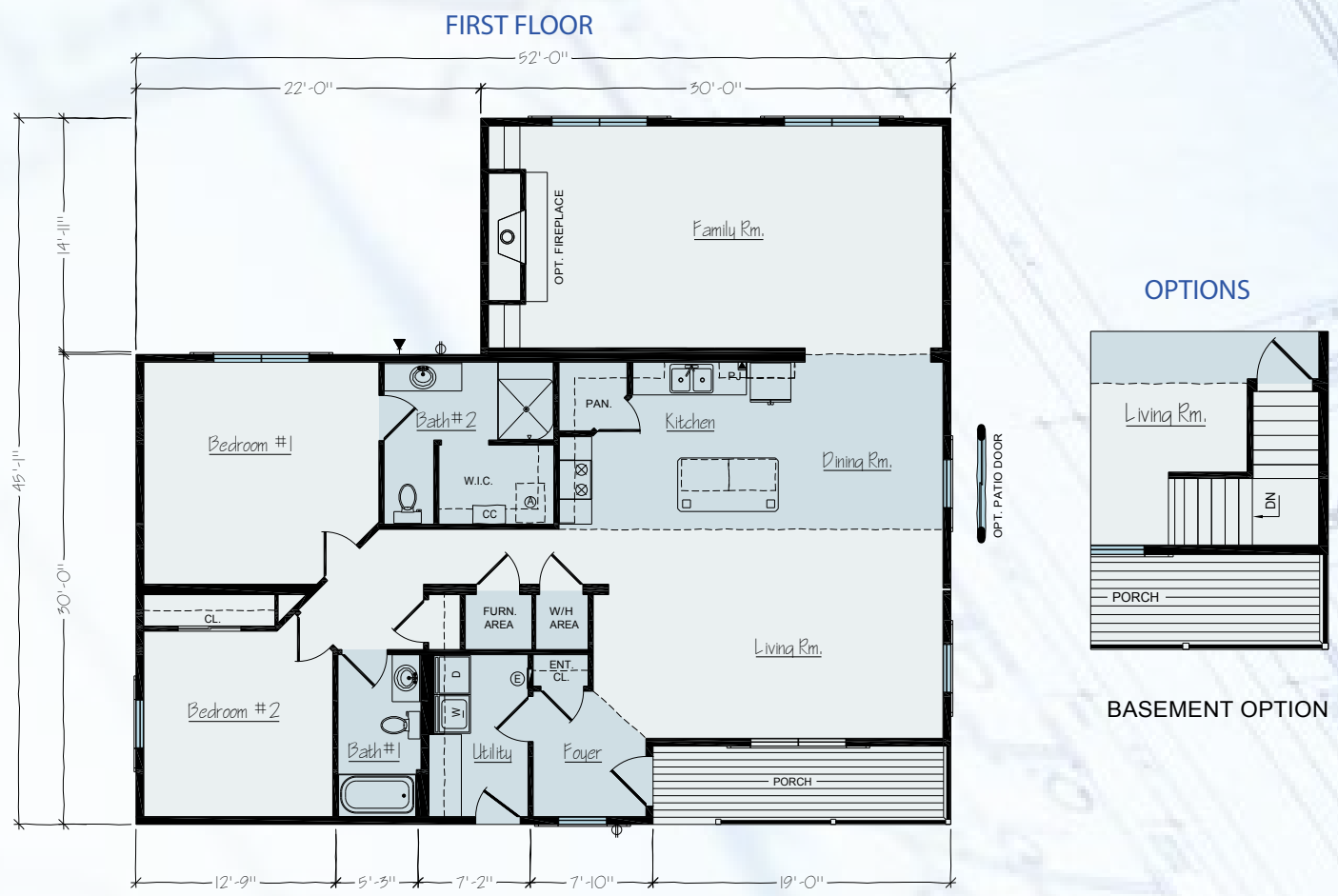
## OPTIONS



BASEMENT OPTION



Model EJ43-30 • 2,010 SQ FT • 2 BR • 2 BA



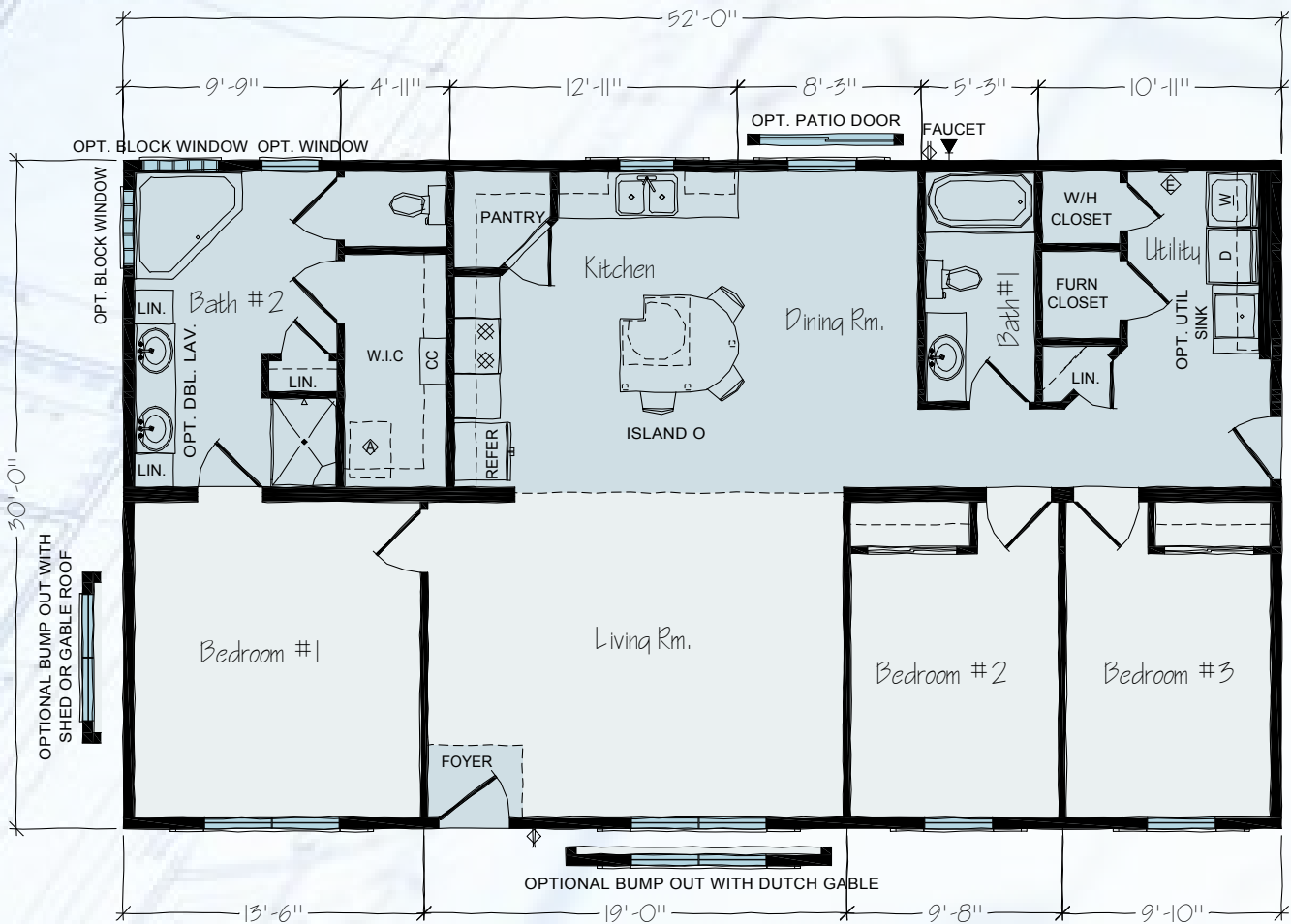
# JOSEPH SERIES



• 1,560 SQ FT • 3 BR • 2 BA

Model JR24-30

## FIRST FLOOR





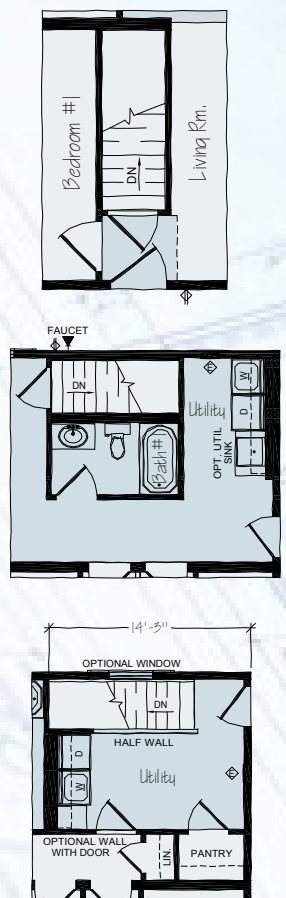


Model EJ24-30 • 1,868 SQ FT • 4 BR • 2 BA

FIRST FLOOR



OPTIONS



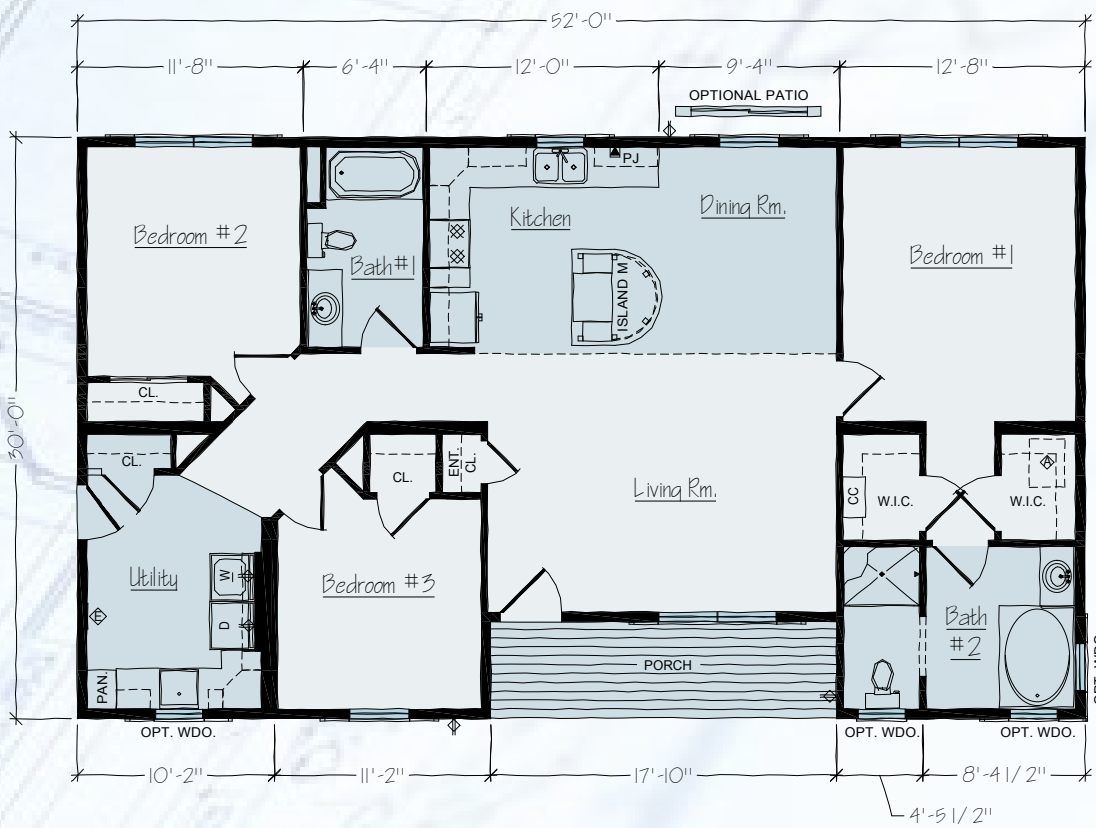
# DUBLIN SERIES



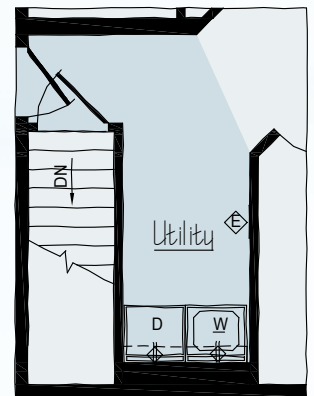
• 1,560 SQ FT • 3 BR • 2 BA

Model JR41-30

## FIRST FLOOR



## OPTIONS



BASEMENT OPTION

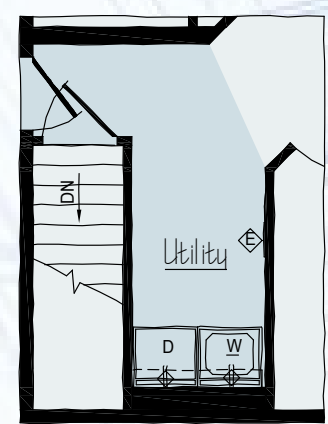


Model EJ41-30 • 2,010 SQ FT • 4 BR • 4 BA

FIRST FLOOR



OPTIONS



BASEMENT OPTION

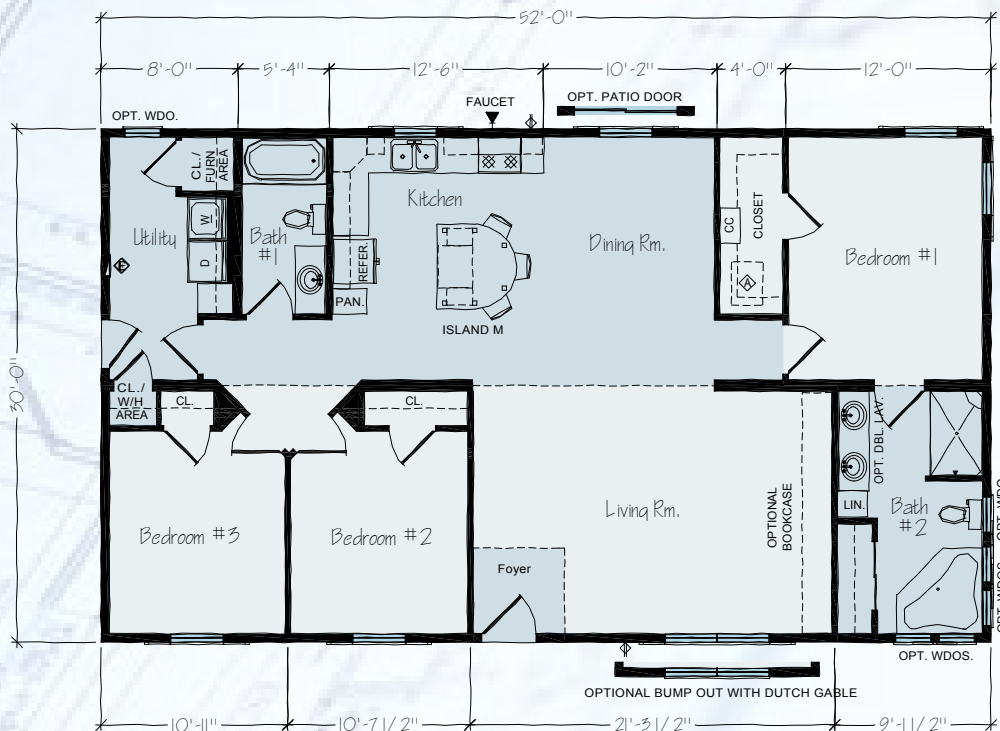
# ADELAIDE SERIES



• 1,560 SQ FT • 3 BR • 2 BA

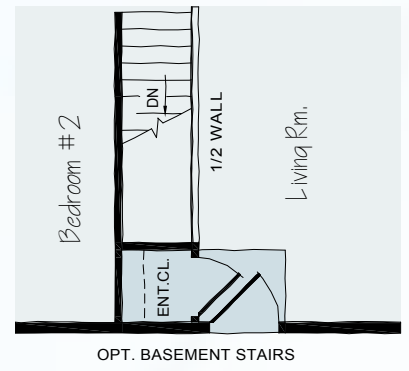
Model JR35-30

## FIRST FLOOR



OPTIONAL BUMP OUT WITH SHED OR GABLE ROOF

## OPTIONS



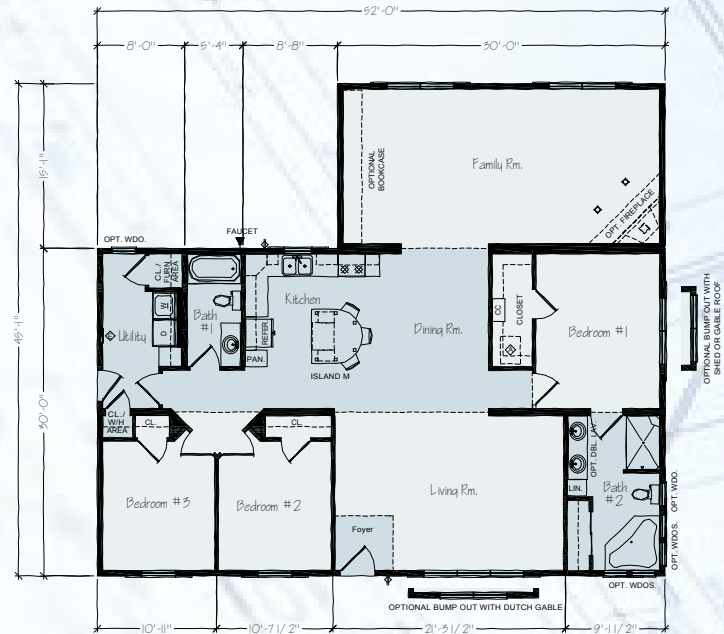
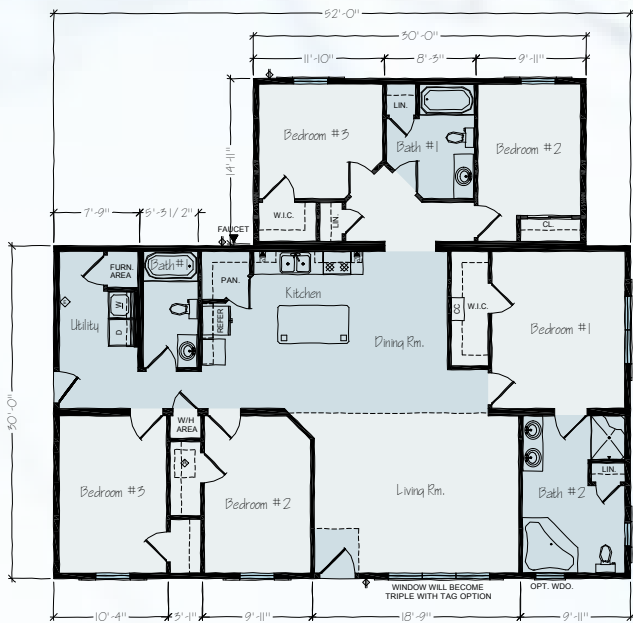


Model EJ35-30 • 2,010 SQ FT • 5 BR • 3 BA

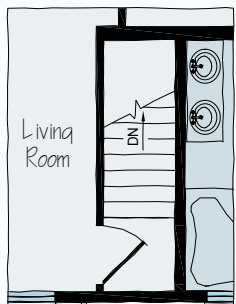
Model EJ35A-30 • 2,010 SQ FT • 3 BR • 2 BA

Model EJ35-30

Model EJ35A-30



OPTIONS



BASEMENT OPTION

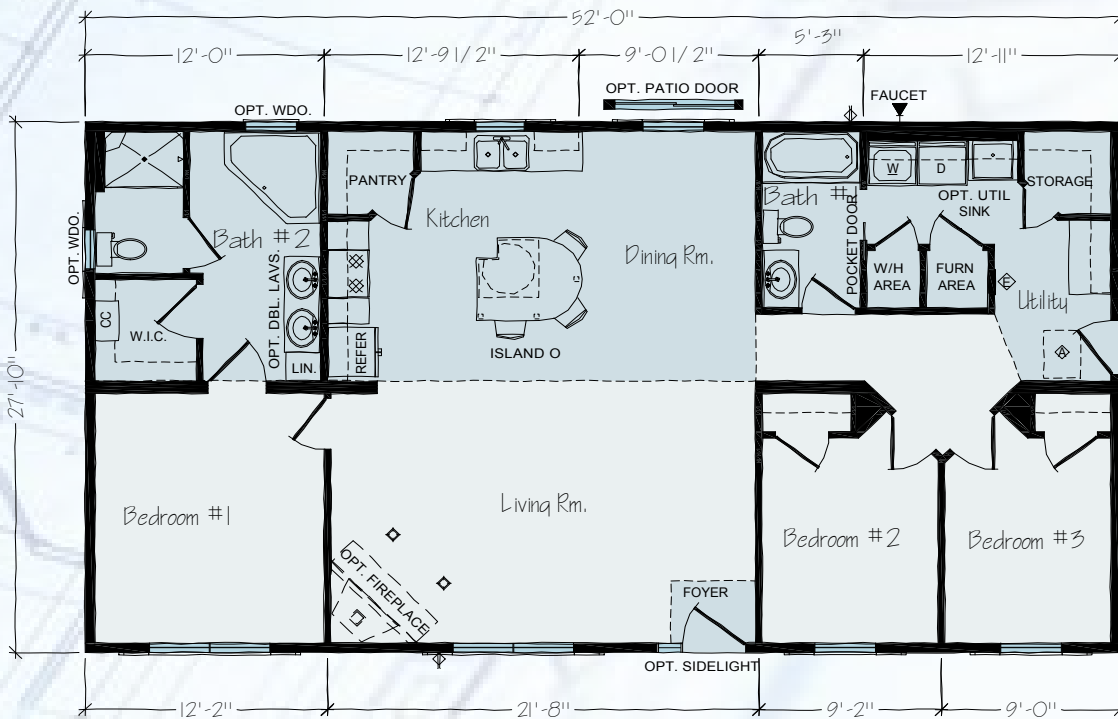
# DAVIS SERIES



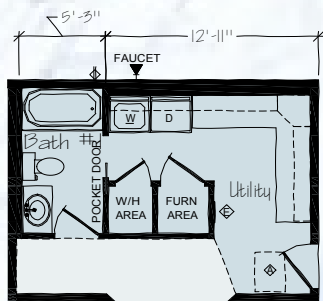
• 1,456 SQ FT • 3 BR • 2 BA

Model R30-28

Model R30-28

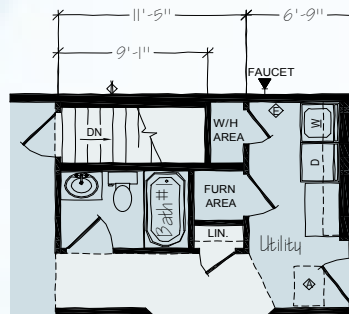


Optional Utility



OPT. UTILITY ROOM CABINETS REPLACING STD STORAGE

Optional Basement



OPT. STAIRWAY LAYOUT



Model ER30A-28 • 1,876 SQ FT • 3 BR • 2 BA

Model ER30-28 • 1,764 SQ FT • 4 BR • 2 BA

Model ER30A-28



Model ER30-28



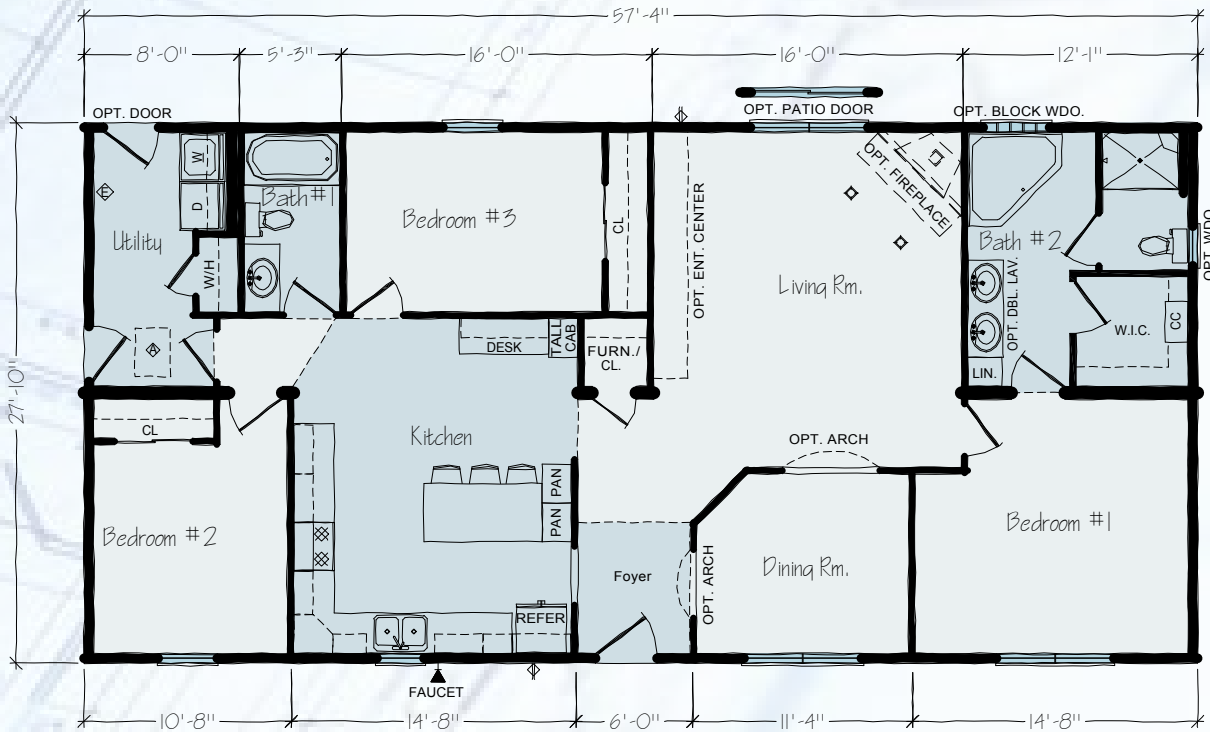
# GALLERY SERIES



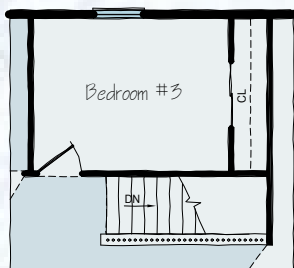
• 1,605 SQ FT • 3 BR • 2 BA

Model R25-28

Model R25-28

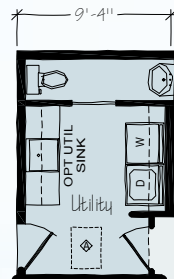


Optional Basement



RAILING ON SITE BY OTHERS  
OPTIONAL BASEMENT STAIRWAY LOCATION

Optional 1/2 Bath



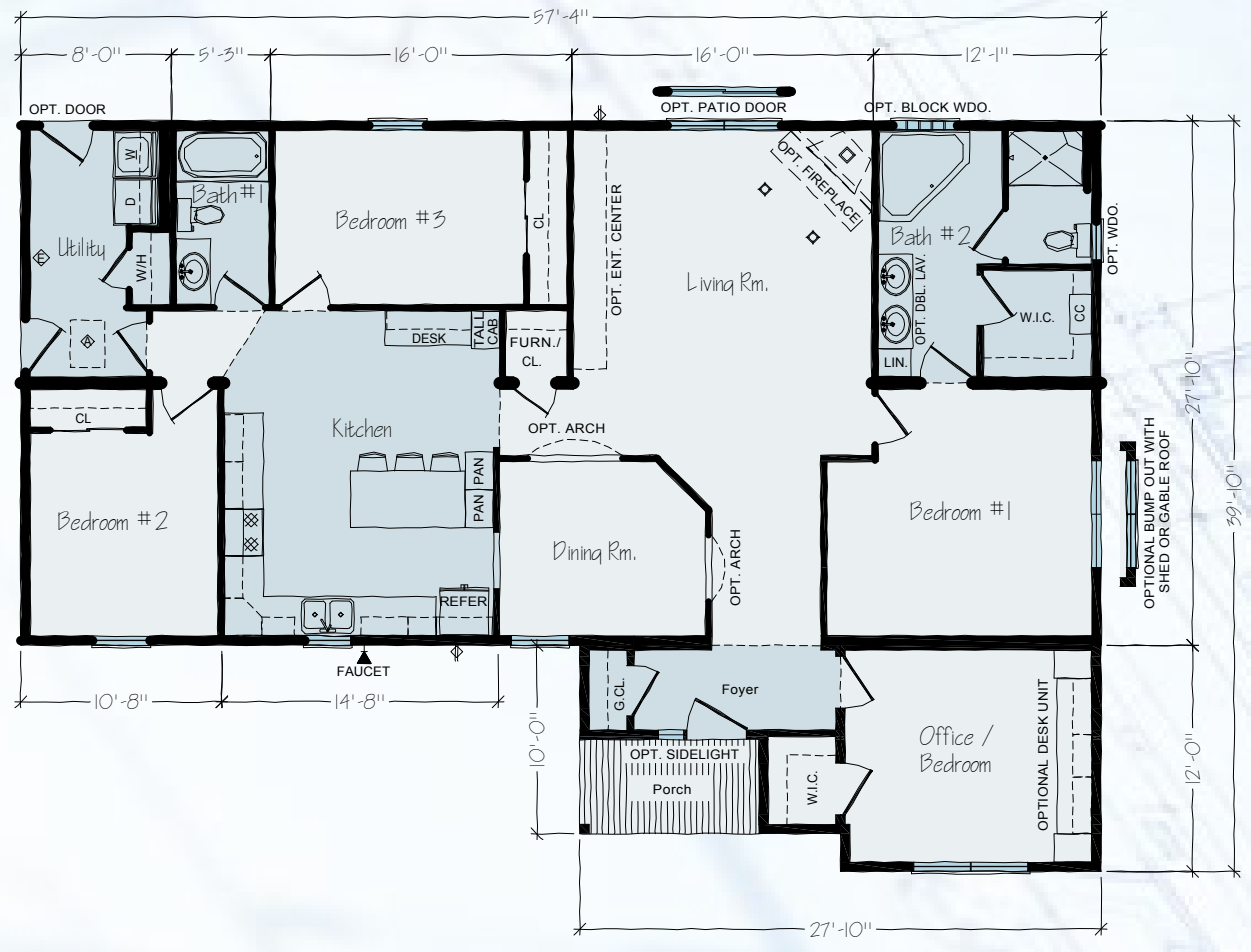
OPTIONAL HALF BATH  
AND UTILITY ROOM





Model ER25-28 • 1,913 SQ FT • 4 BR • 2 BA

FIRST FLOOR



# Choose Your Style

What's your style? Whether it is Victorian, Contemporary, Transitional, Craftsman or Colonial, a Rochester home's exterior can be accessorized to reflect your personal taste. You'll pick a Rochester Homes floor plan that suits your family's needs and work with your builder to achieve the style that's right for you.



# Homestyle Renderings... A Few Examples



Ranch A: Victorian



Ranch B: Craftsman



Ranch C: Contemporary



Two Story A: Craftsman



Two Story B: Contemporary



Two Story C: Traditional

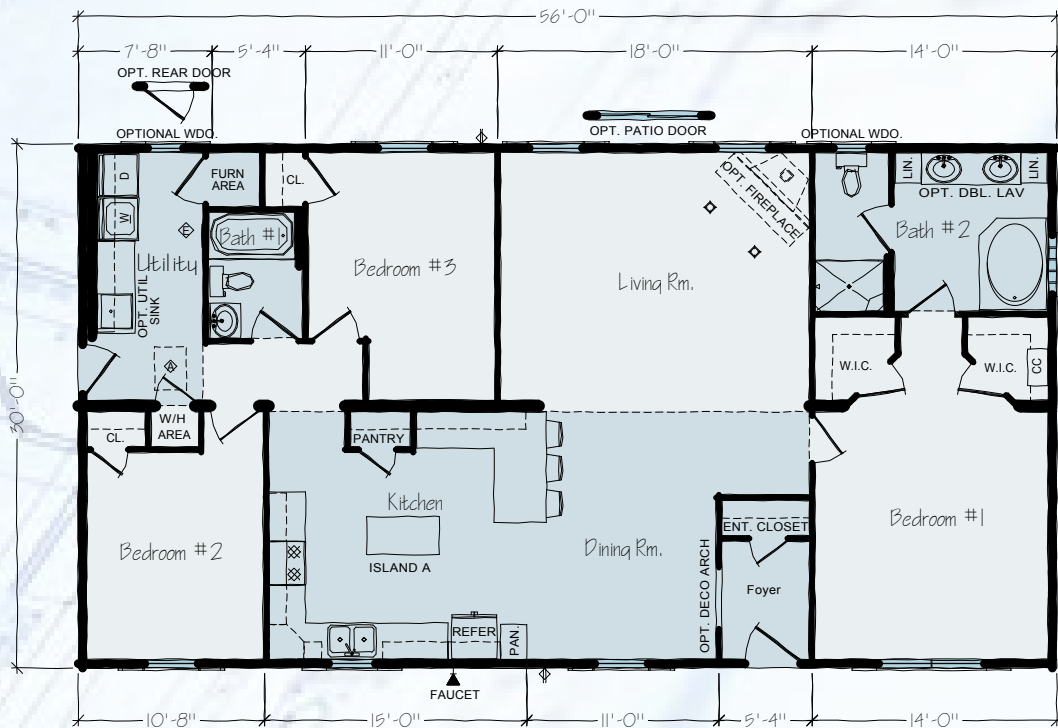
# ALBANY SERIES



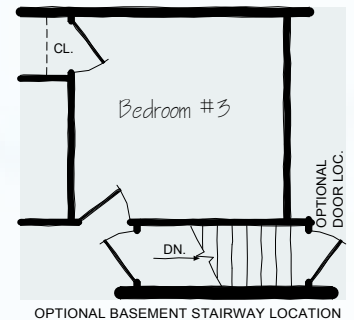
• 1,680 SQ FT • 3 BR • 2 BA

Model JR9-30

## FIRST FLOOR



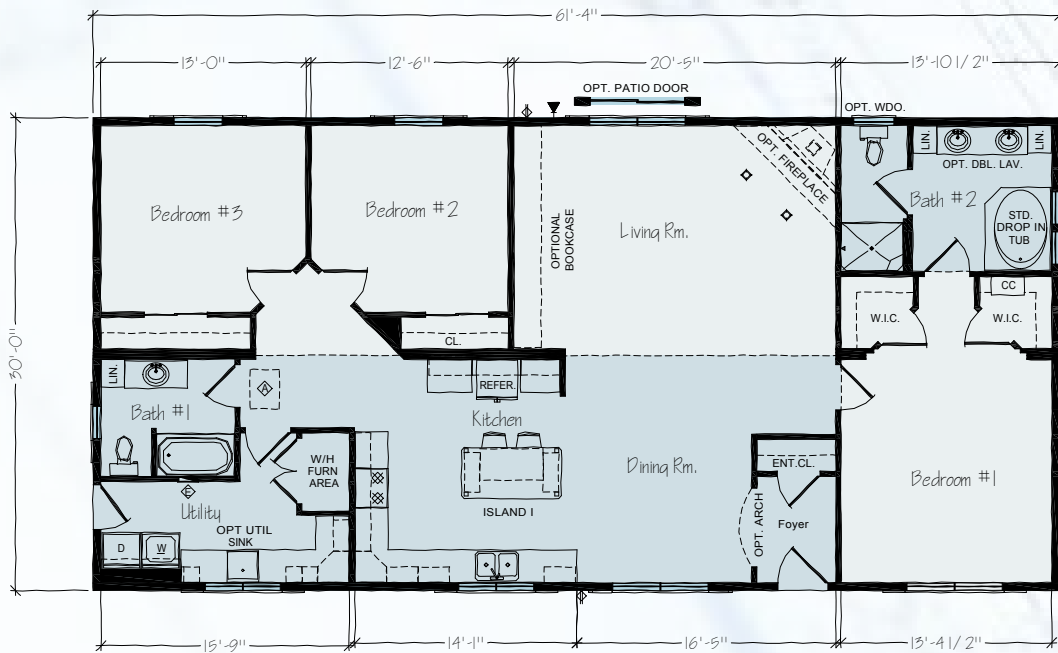
## OPTIONS



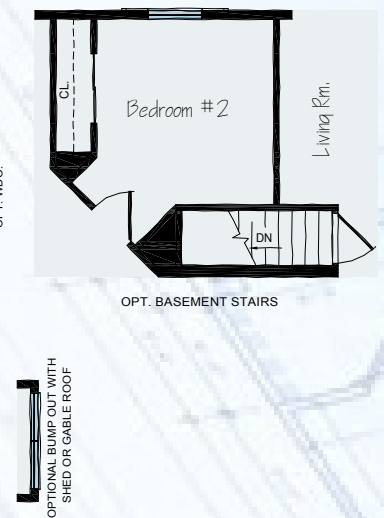


Model JR9A-30 • 1,840 SQ FT • 3 BR • 2 BA

FIRST FLOOR



OPTIONS



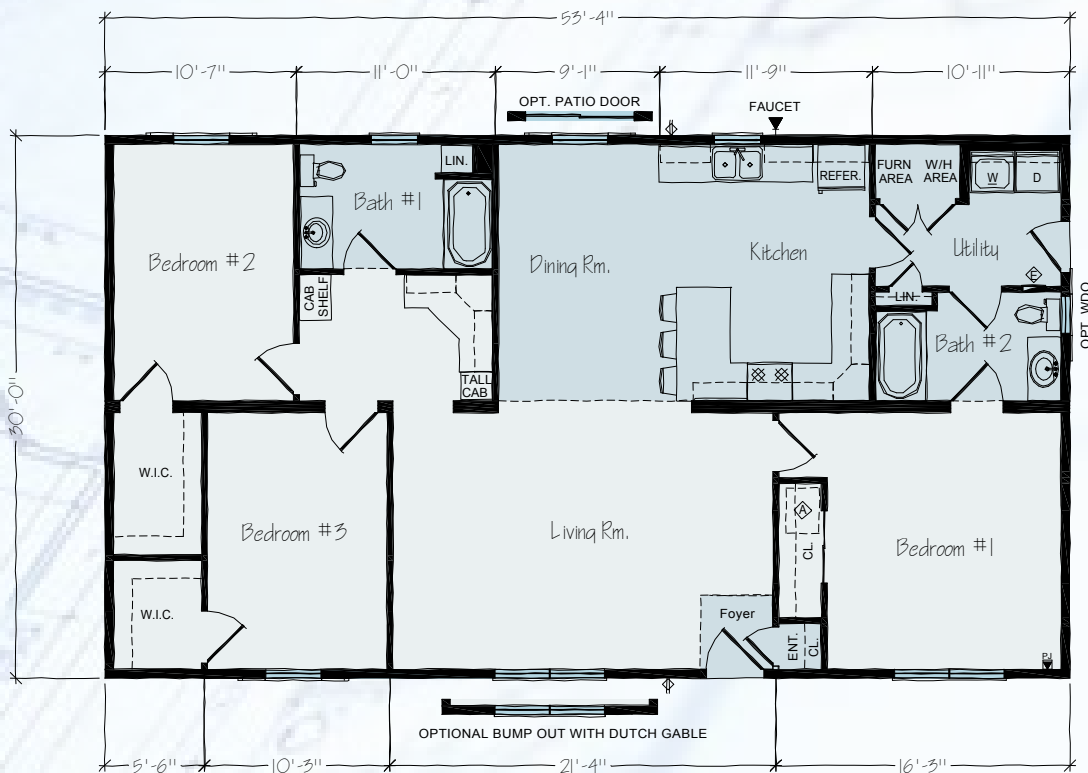
# TOWNSLAND



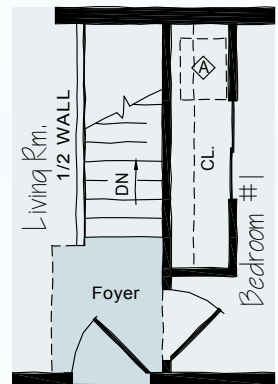
• 1,600 SQ FT • 3 BR • 2 BA

Model JR39-30

## FIRST FLOOR



## OPTIONS



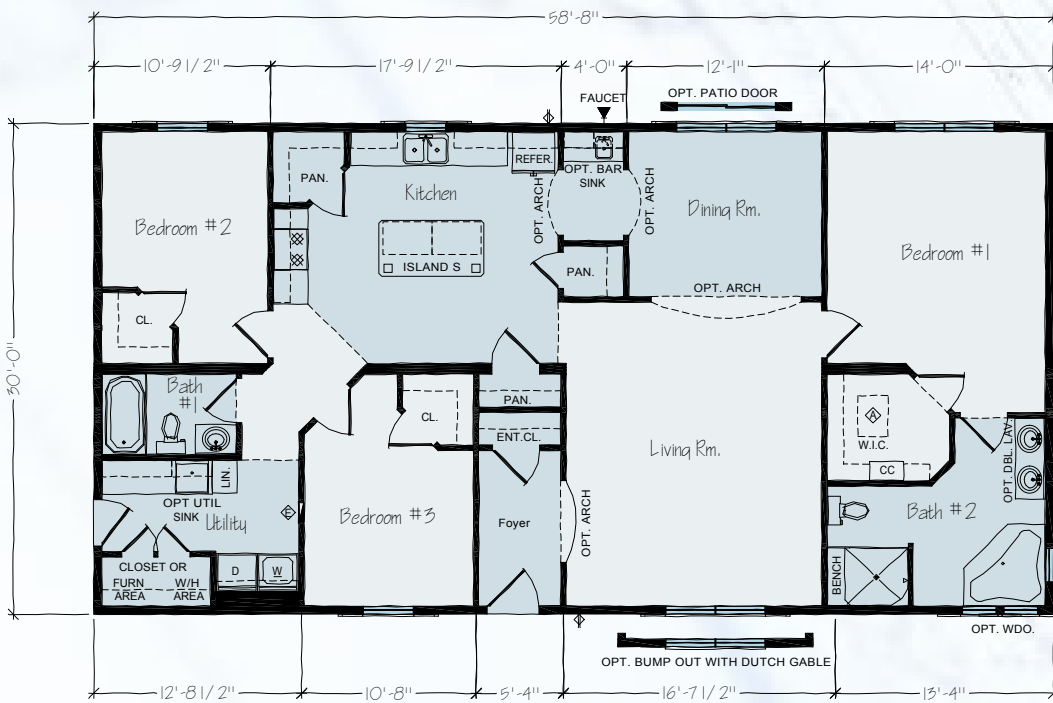
OPT. BASEMENT STAIRS

# ALICE SPRINGS



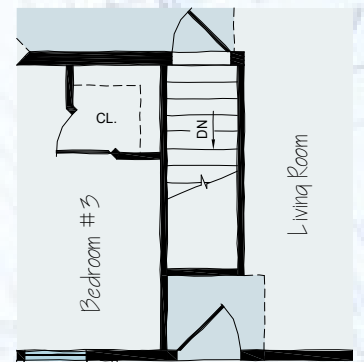
Model JR33-30 • 1,760 SQ FT • 3 BR • 2 BA

## FIRST FLOOR



## OPTIONS

OPTIONAL BUMP OUT WITH SHED OR GABLE ROOF



OPT. BASEMENT STAIRS

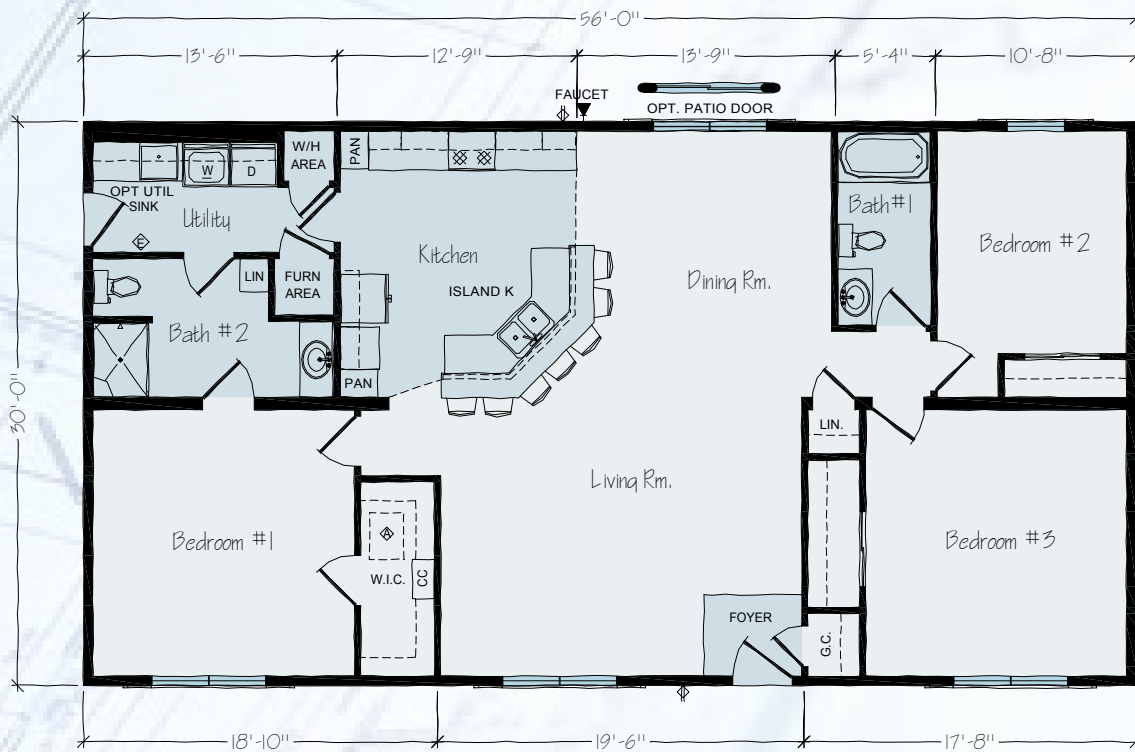
# ALLEN TOWNNE SERIES



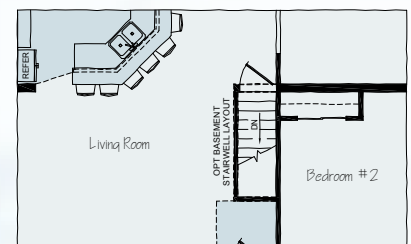
• 1,680 SQ FT • 3 BR • 2 BA

Model JR22-30

Model JR22-30



Optional Basement

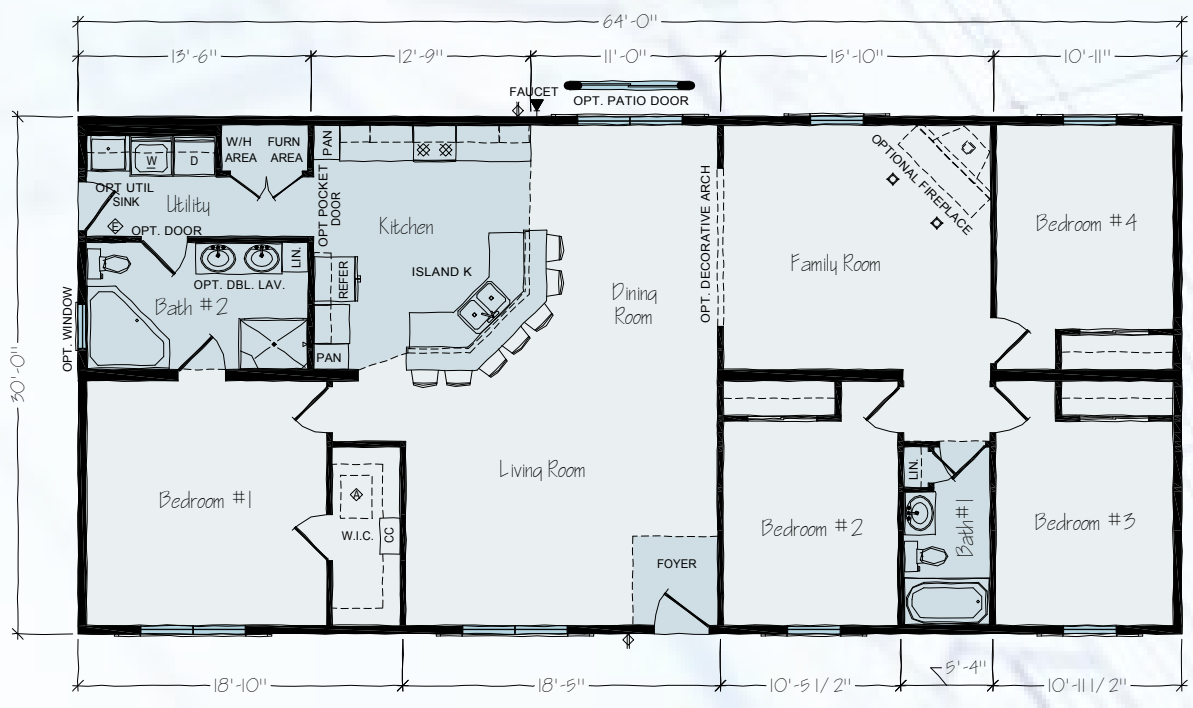


OPT. STAIRWAY LAYOUT



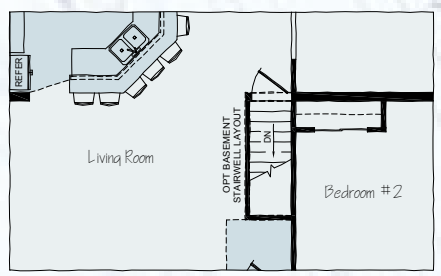


Model JR22A-30 • 1,920 SQ FT • 4 BR • 2 BA



FIRST FLOOR

OPTIONS



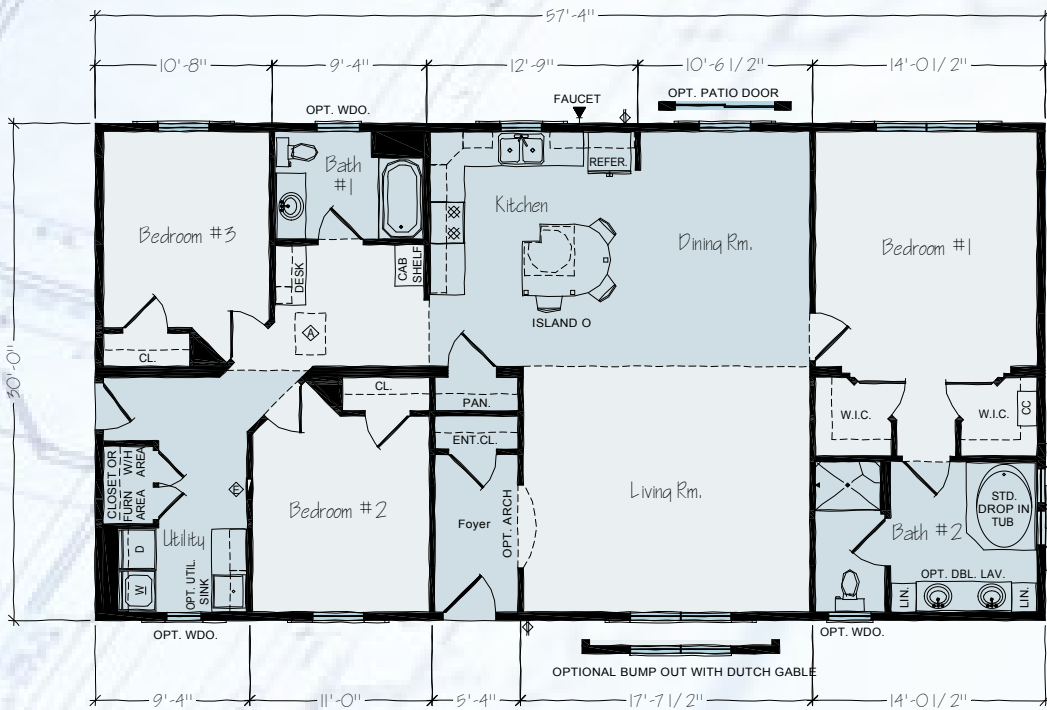
OPT. STAIRWAY LAYOUT

# DOUGLAS

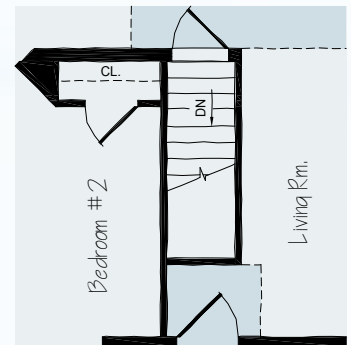
• 1,720 SQ FT • 3 BR • 2 BA

Model JR34-30

## FIRST FLOOR



## OPTIONS

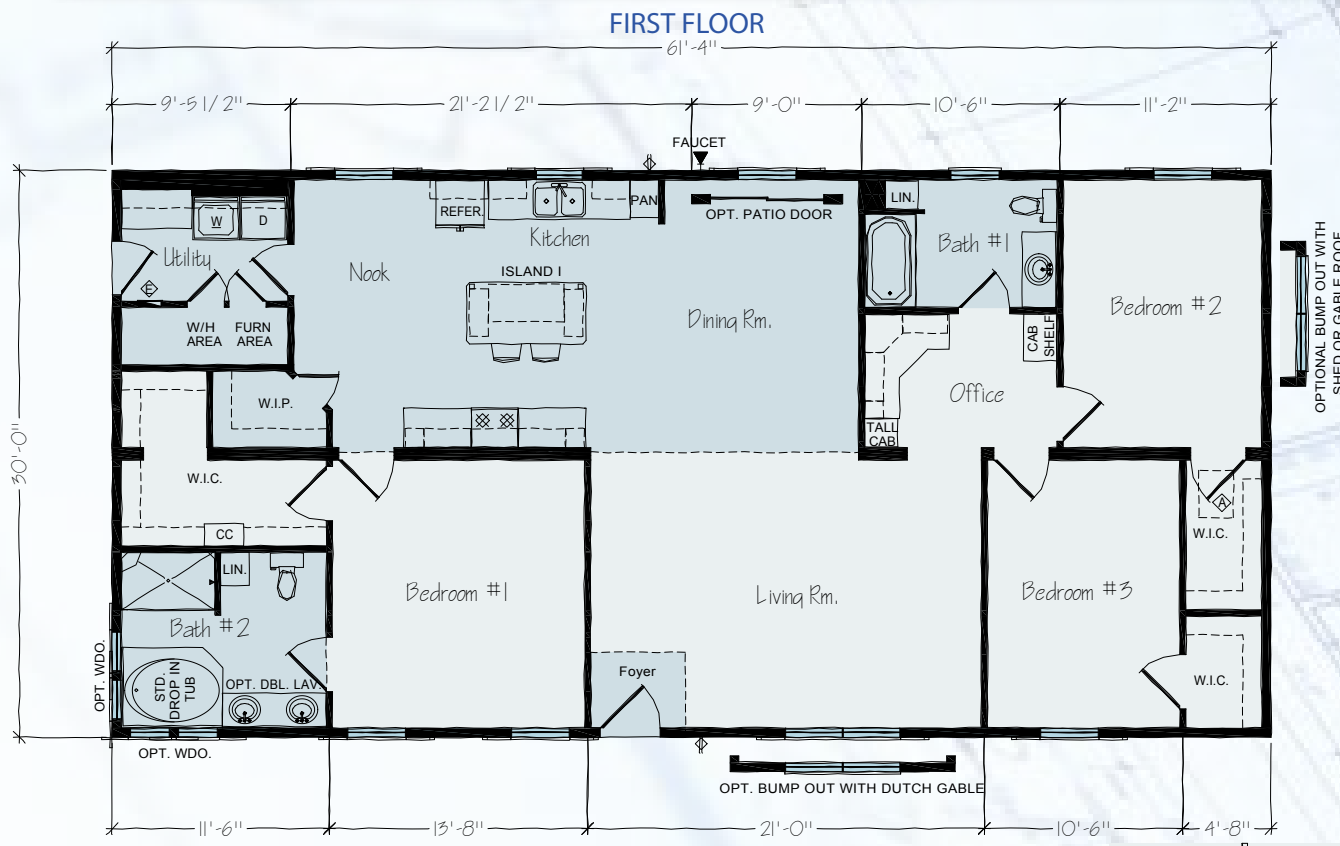


OPT. BASEMENT STAIRS

# VICTORIA



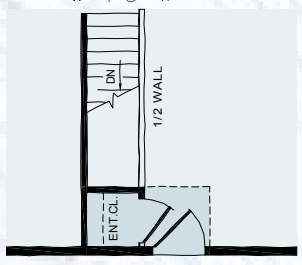
Model JR31-30 • 1,840 SQ FT • 3 BR • 2 BA



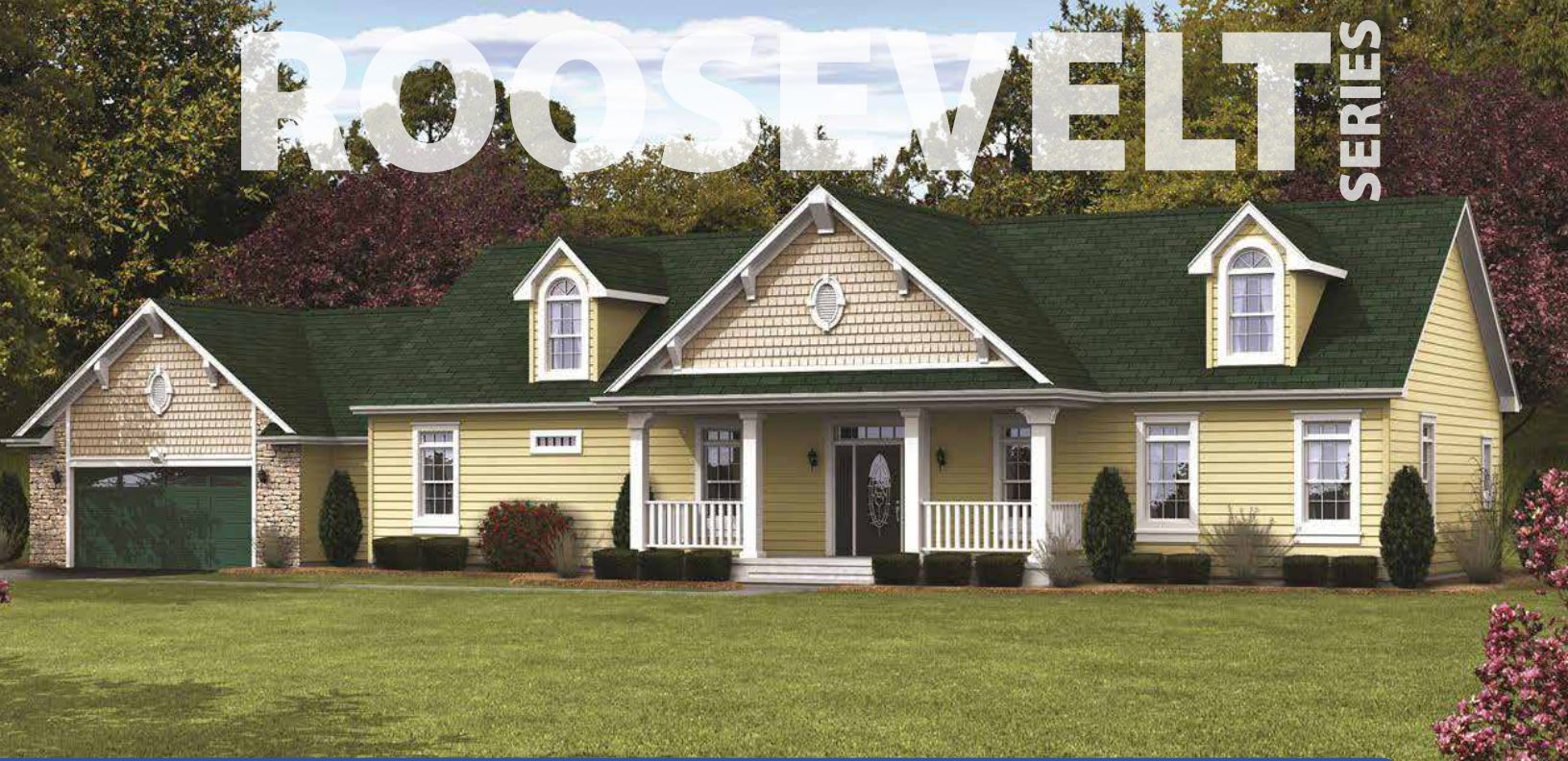
OPTIONAL BUMP OUT WITH SHED OR GABLE ROOF

OPT. BUMP OUT WITH DUTCH GABLE

## BASEMENT OPTION



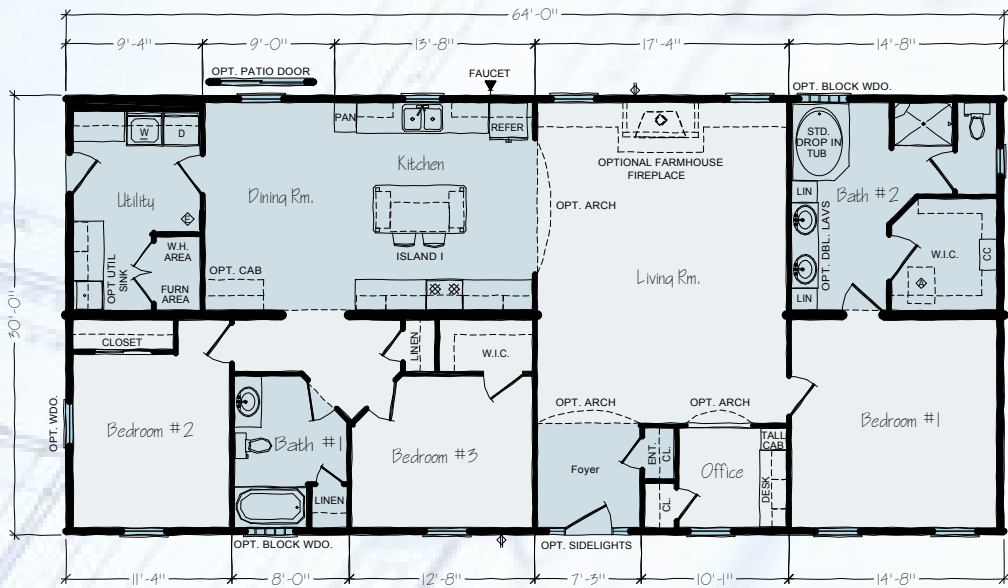
# ROOSEVELT SERIES



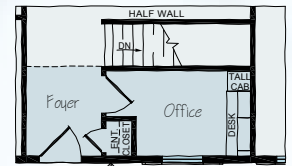
• 1,920 SQ FT • 3 BR • 2 BA

Model JR4A-30

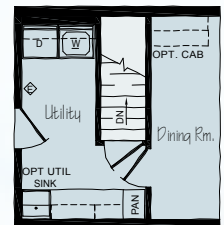
## FIRST FLOOR



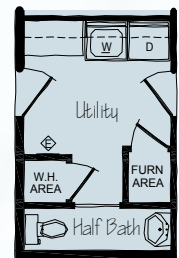
## OPTIONS



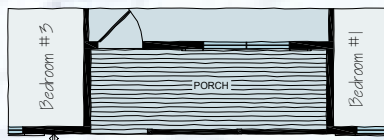
OPTIONAL STAIR/OFFICE LAYOUT



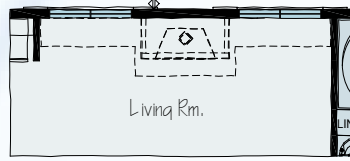
OPTIONAL BASEMENT LAYOUT



Opt. Utility  
W/Half Bath



OPTIONAL PORCH ON JR4A OMMITS OFFICE

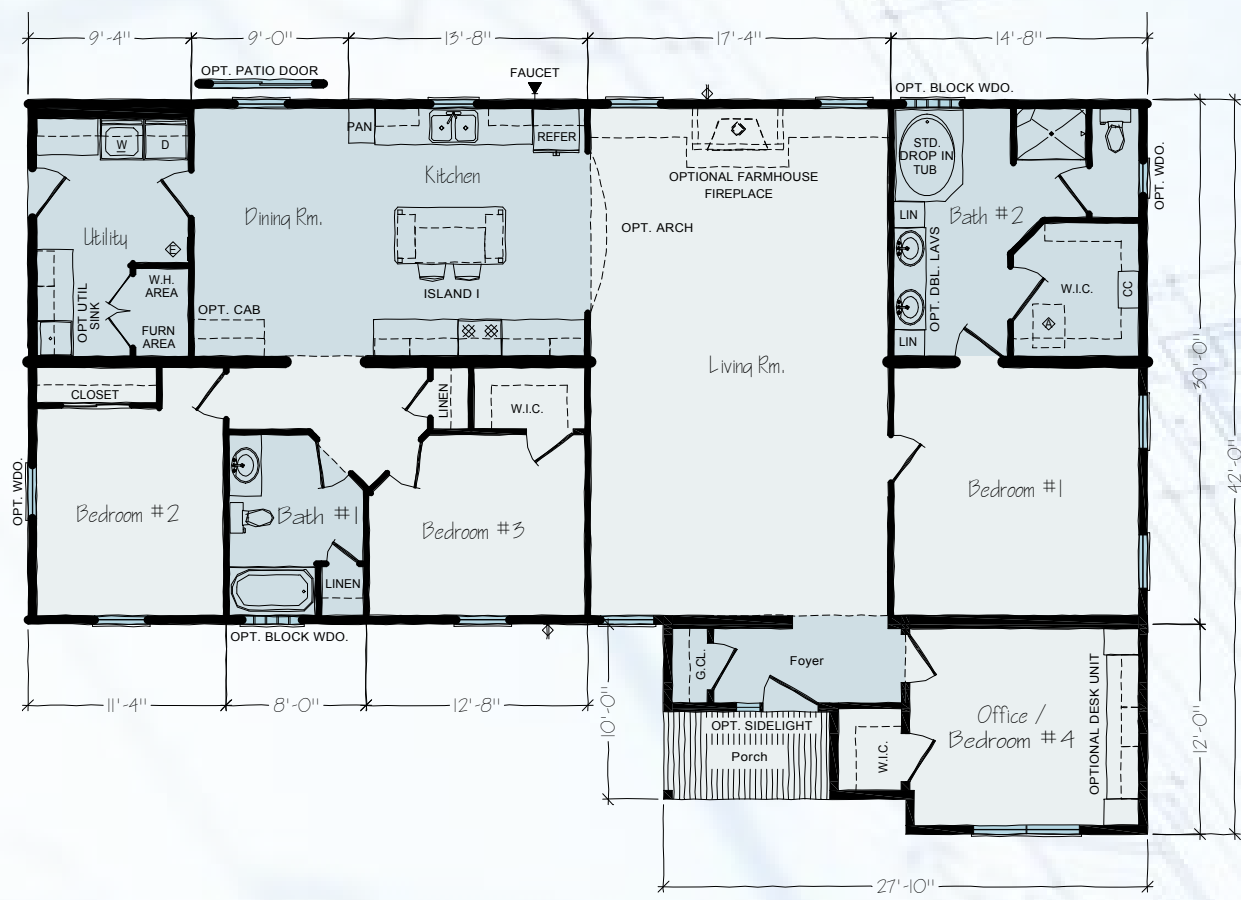


OPTIONAL FARMHOUSE  
FIREPLACE



Model EJRA-30 • 2,228 SQ FT • 4 BR • 2 BA

FIRST FLOOR



# PATRIOT SERIES



• 1,920 SQ FT • 3 BR • 2 BA

Model JR13-30

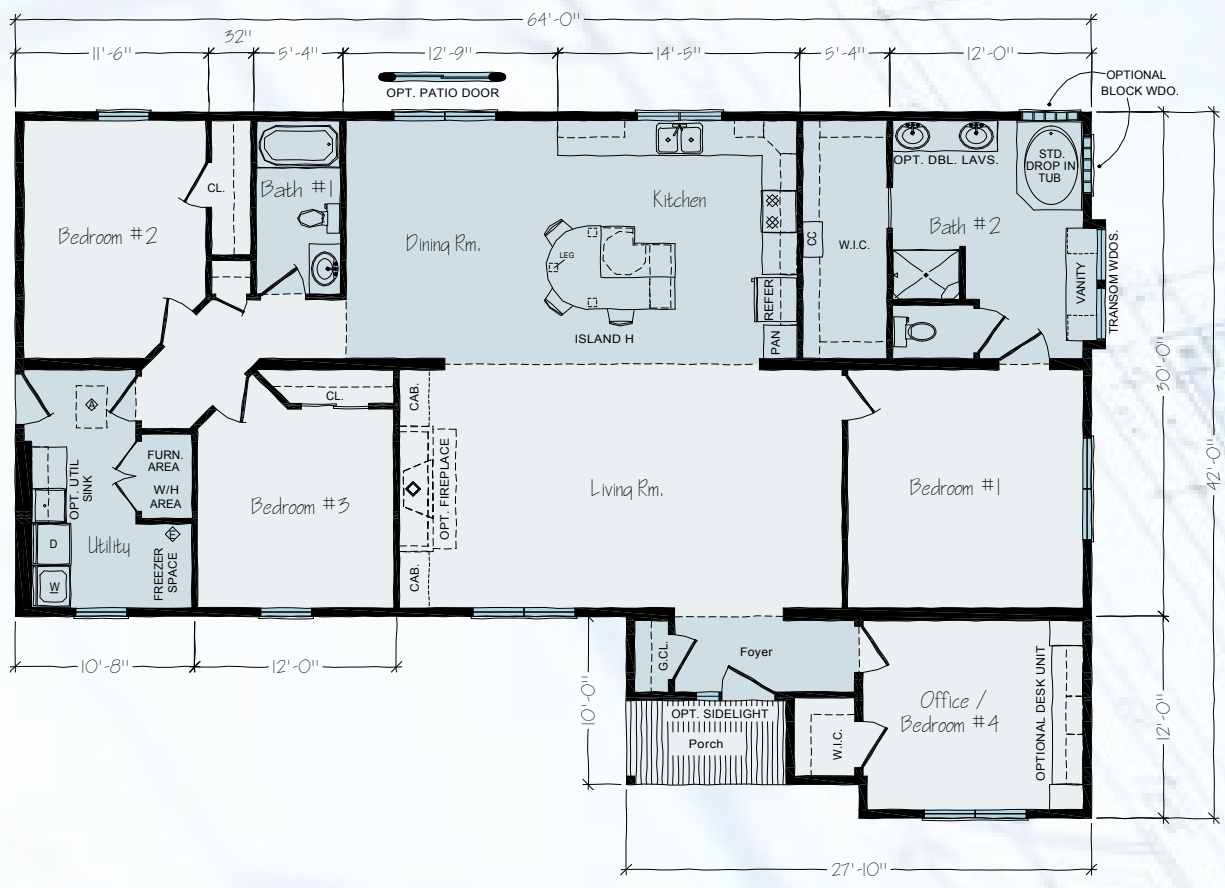
## FIRST FLOOR





Model EJ13-30 • 2,228 SQ FT • 4 BR • 2 BA

FIRST FLOOR



# HOBART



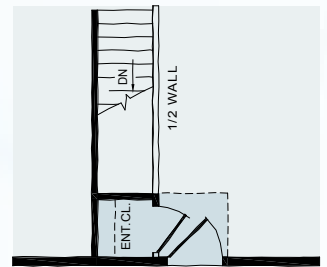
• 1,920 SQ FT • 3 BR • 2 BA

Model JR29-30

## FIRST FLOOR



## OPTIONS



OPT. BASEMENT STAIRS

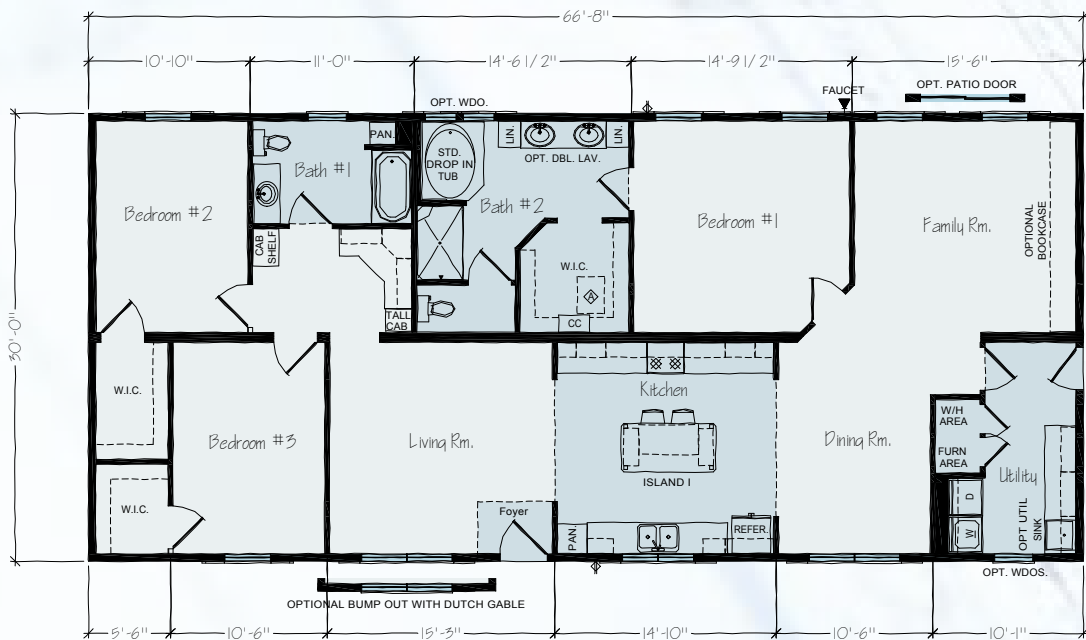


# INDEPENDENCE

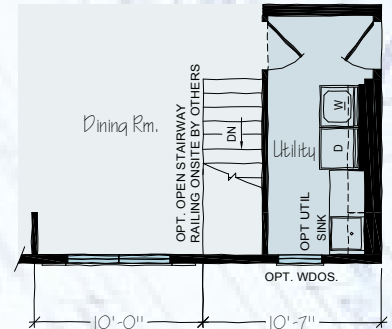


Model JR8-30 • 2,000 SQ FT • 3 BR • 2 BA

## FIRST FLOOR



## OPTIONS



OPT. BASEMENT STAIRS

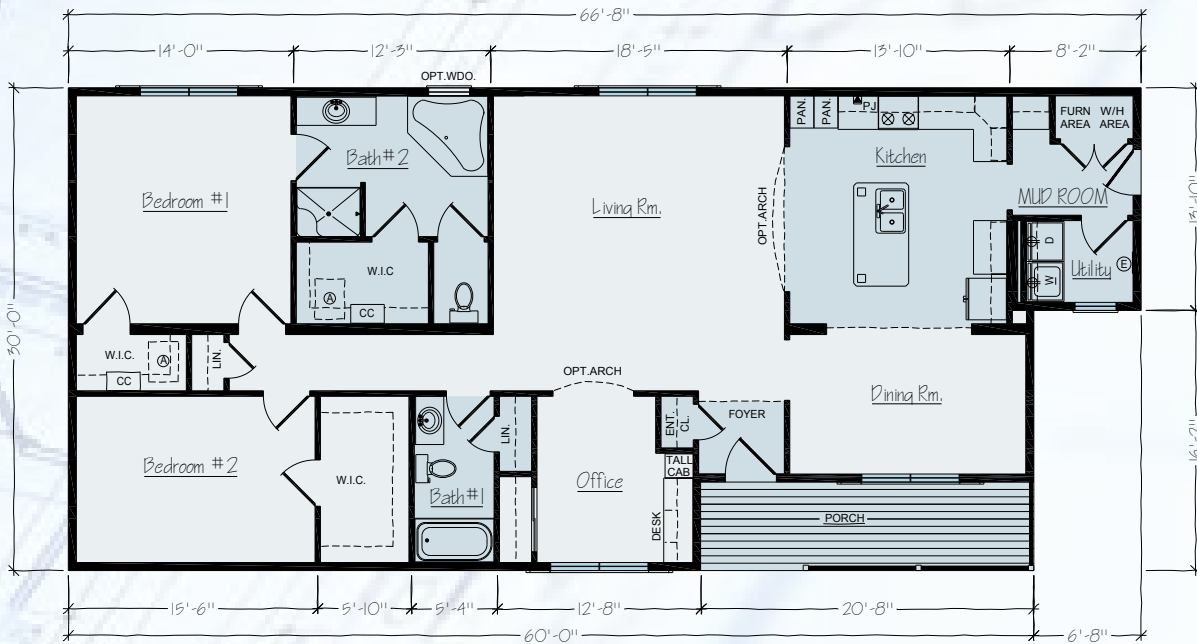
# MASON



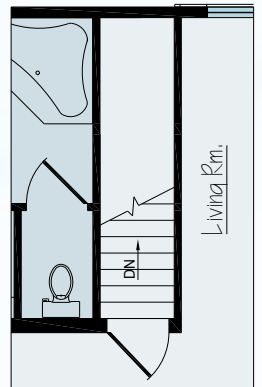
• 1,900 SQ FT • 2 BR • 2 BA

Model JR42-30

## FIRST FLOOR



## OPTIONS



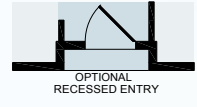
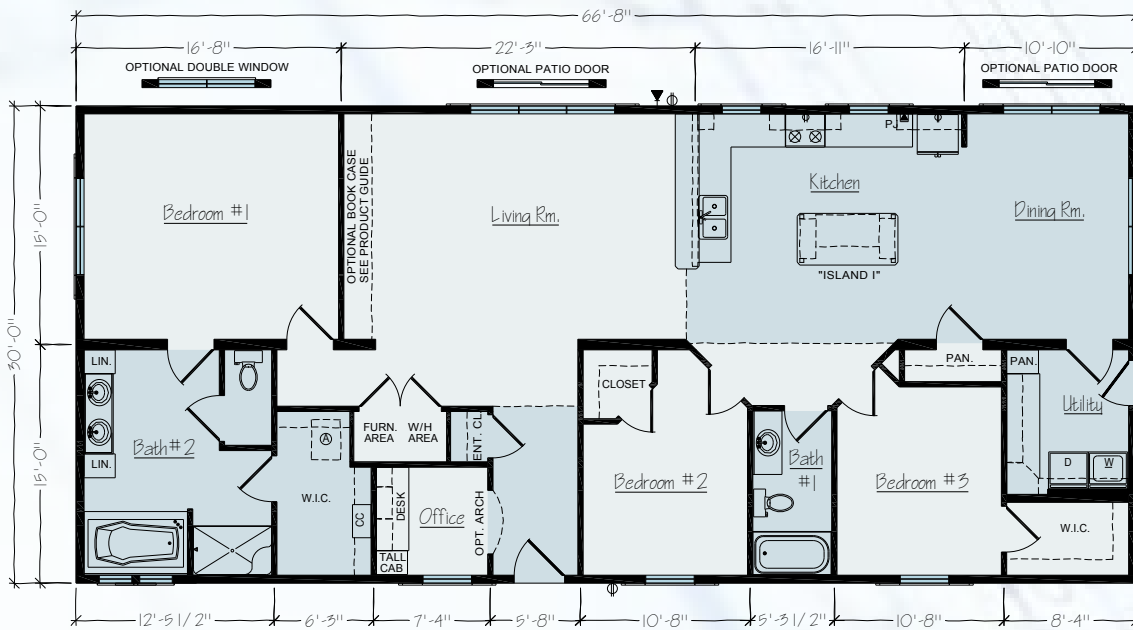
BASEMENT OPTION

# PERTH

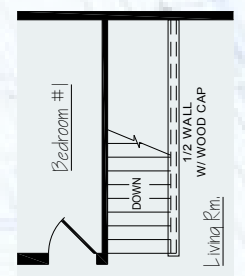


Model JR27-30 • 2,000 SQ FT • 3 BR • 2 BA

## FIRST FLOOR



## BASEMENT OPTION



BASEMENT OPTION

# NORWOOD



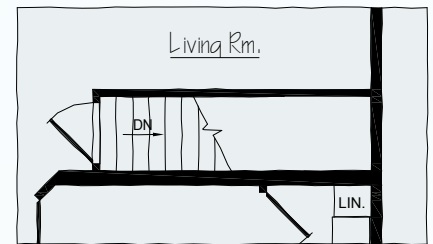
• 2,010 SQ FT • 4 BR • 3 BA

Model EJ35B-30

## FIRST FLOOR



## OPTIONS



BASEMENT OPTION

# RADFORD

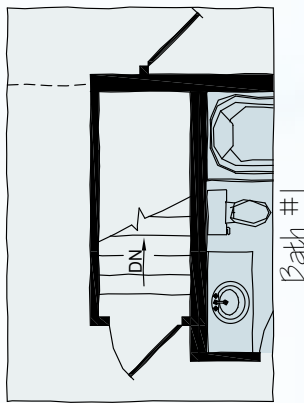


Model EJ44-30 • 2,150 SQ FT • 3 BR • 2 BA

## FIRST FLOOR



## OPTIONS



BASEMENT OPTION

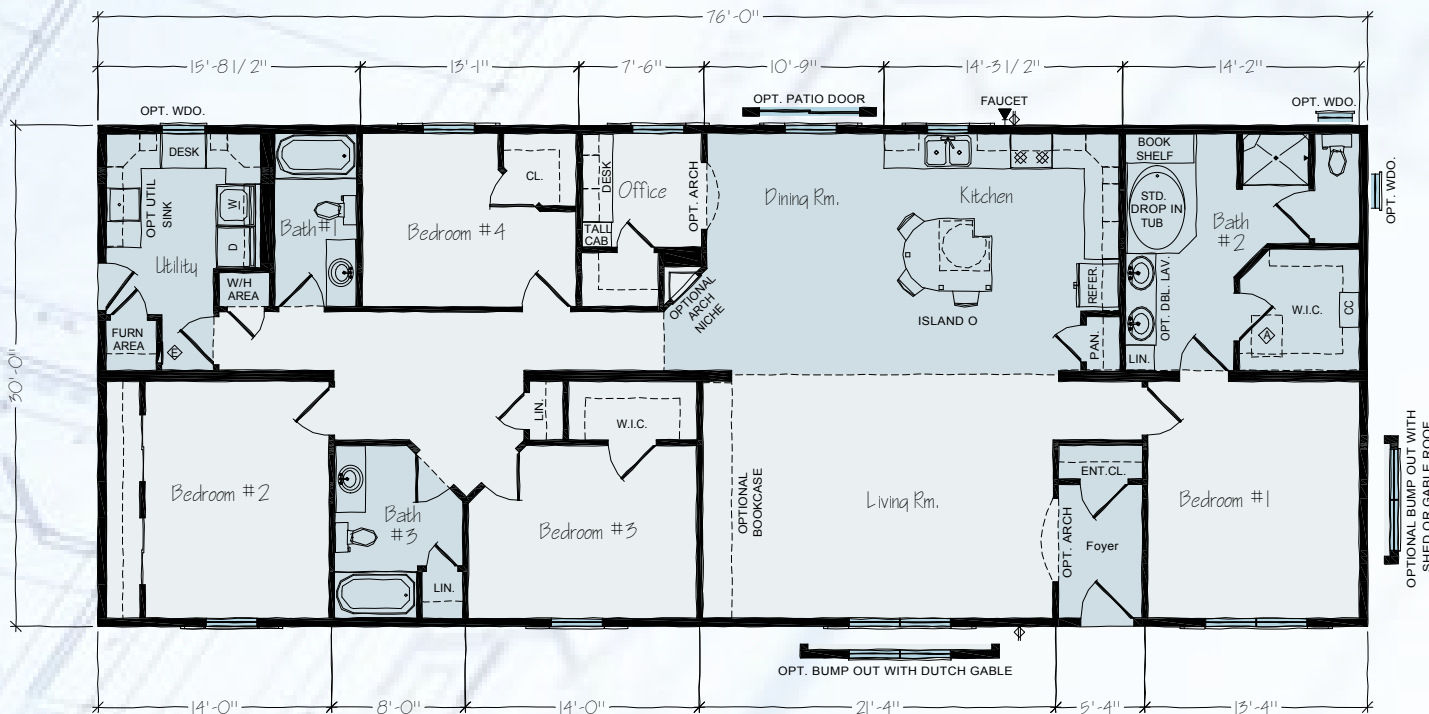
# BRISBANE



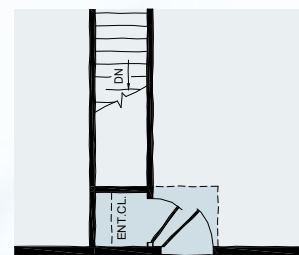
• 2,280 SQ FT • 4 BR • 3 BA

Model JR26-30

## FIRST FLOOR



## BASEMENT OPTION



OPT. BASEMENT STAIRS



# Family Owned & Operated



 **ROCHESTER**  
— H O M E S —

ROCHESTER PRODUCTION FACILITY  
P.O. BOX 587 | ROCHESTER, INDIANA 46975  
TOLL-FREE: 800.860.4554  
LOCAL: 574.223.4321  
FAX: 574.223.1655  
ROCHESTERHOMESINC.COM