



# TRIUMPH ELITE

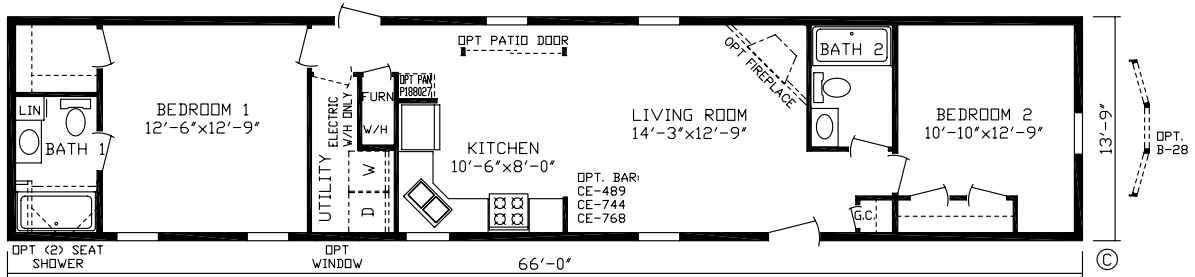
SINGLE SECTION  
VERSATILITY



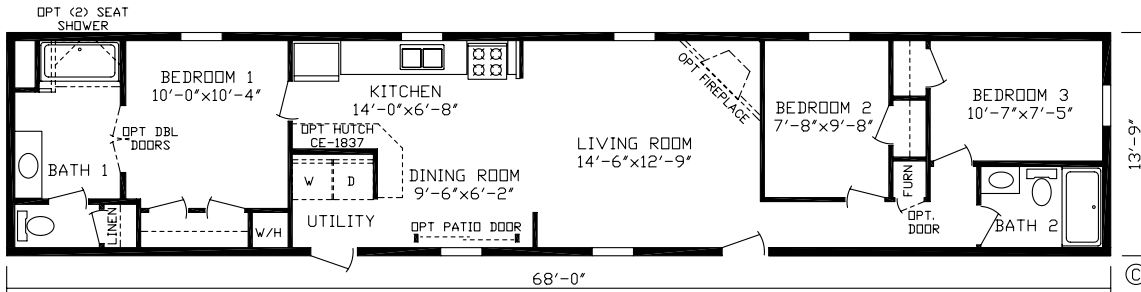
*Modern Designs  
at Affordable Prices*



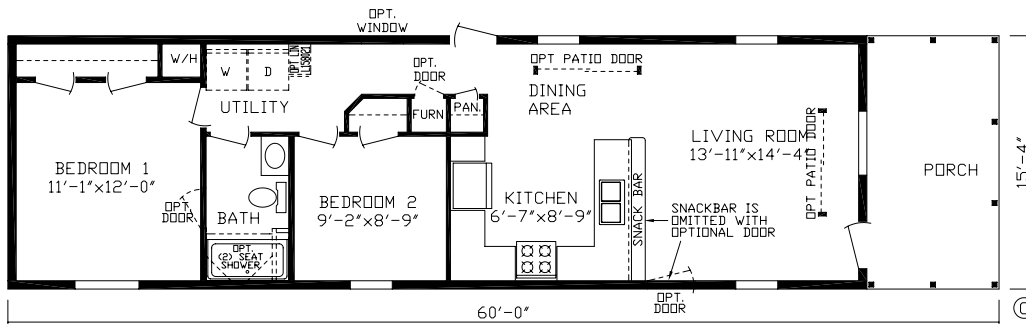
# Single Section Offerings



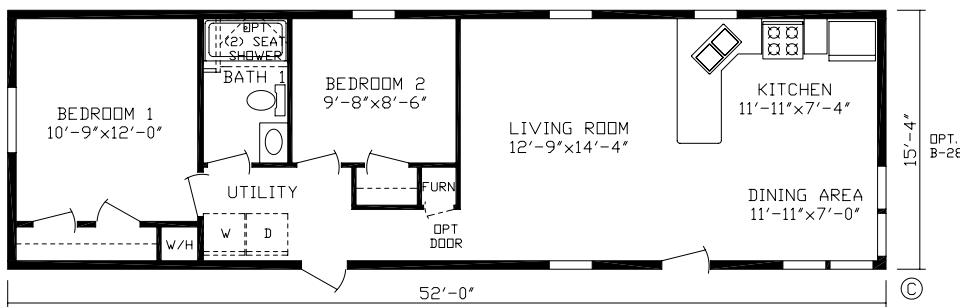
**Bismark Order No. 182501 907 Sq. Ft.**



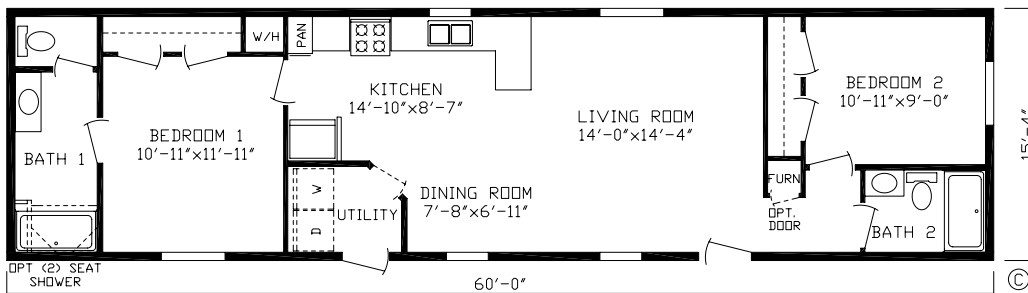
**Carson Order No. 182502 935 Sq. Ft.**



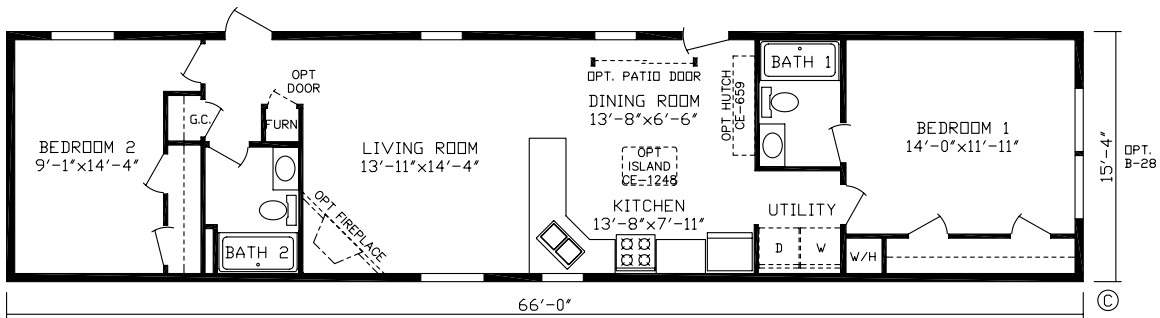
**Foster Order No. 182504 797 Sq. Ft.**



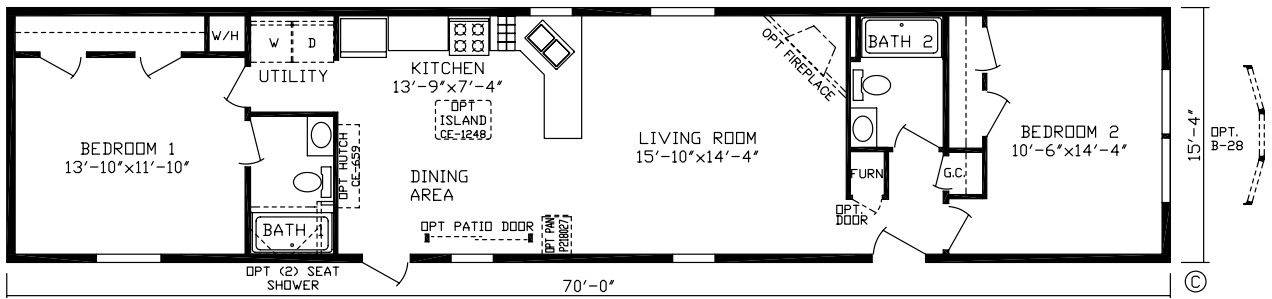
**Camelot Order No. 182514 797 Sq. Ft.**



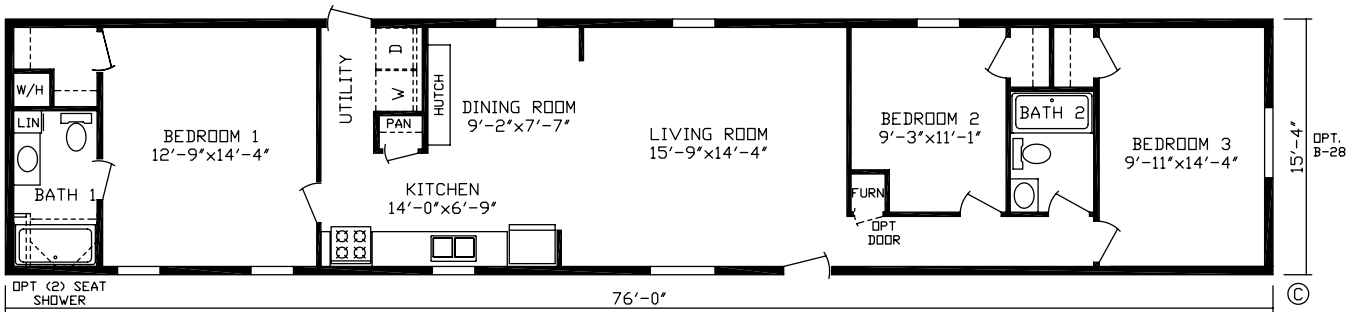
**Arlington Order No. 182503 919 Sq. Ft.**



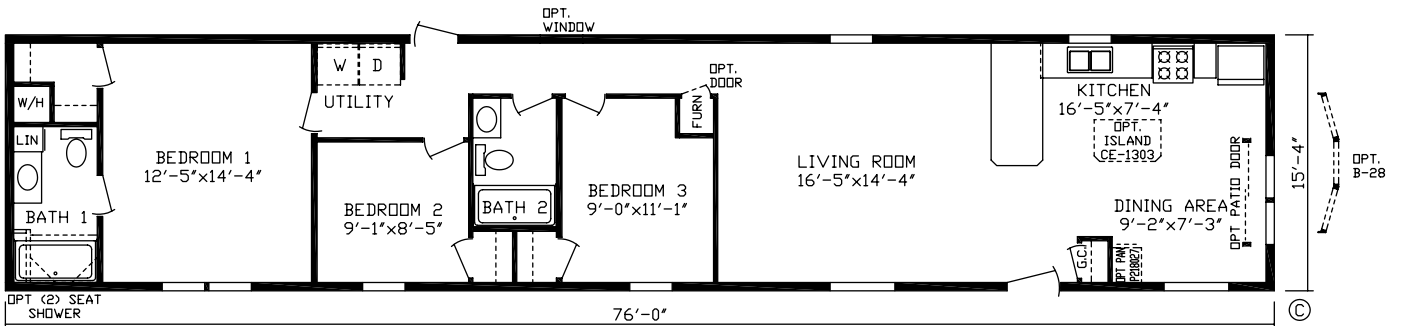
**Logan Order No. 182511 1011 Sq. Ft.**



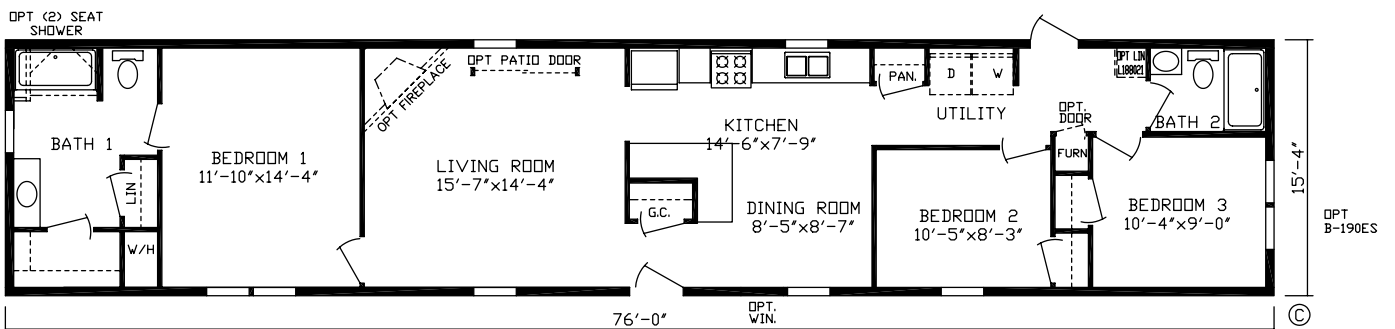
**Mason Order No. 182505 1073 Sq. Ft.**



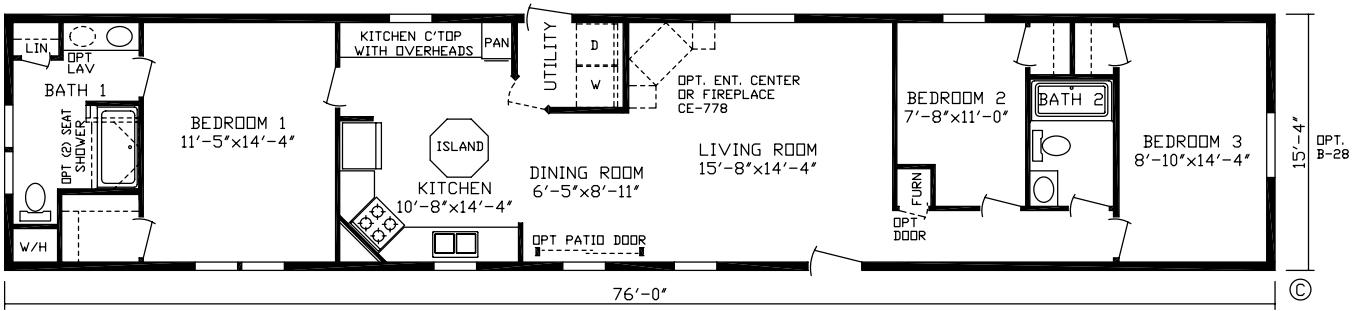
**Willington Order No. 182500 1165 Sq. Ft.**



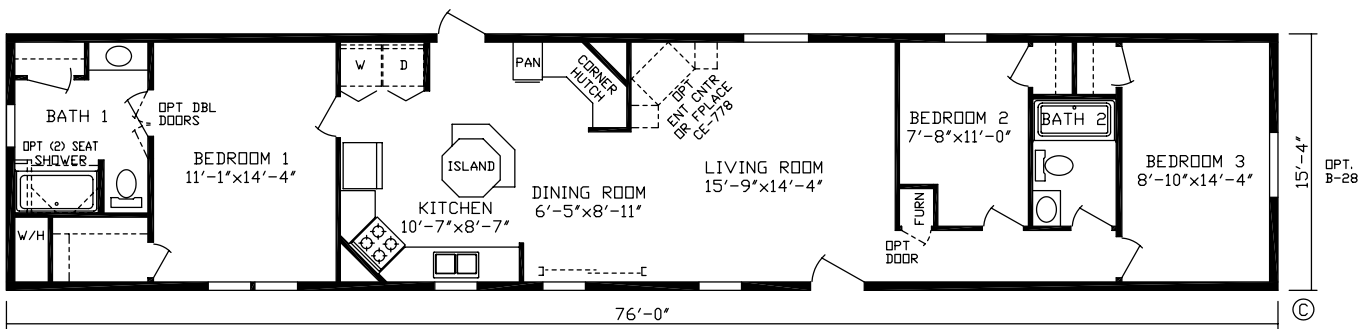
**Kenwood Order No. 182506 1165 Sq. Ft.**



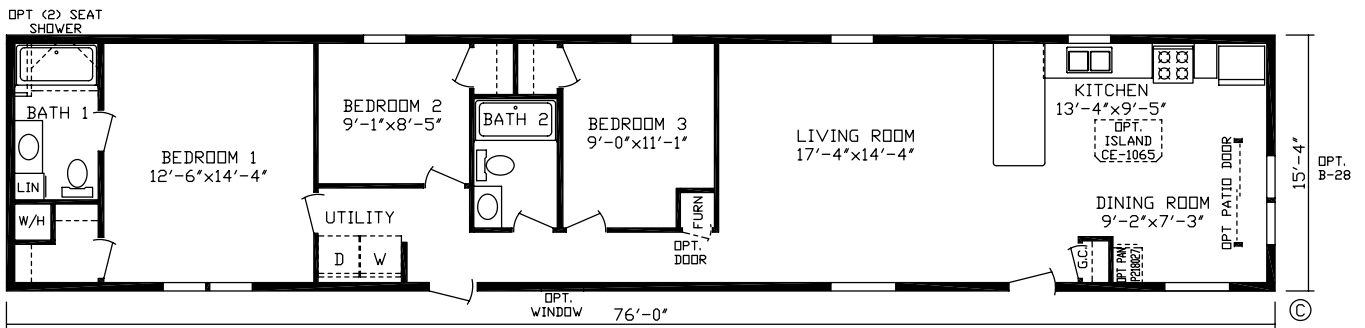
**Sidney Order No. 182507 1165 Sq. Ft.**



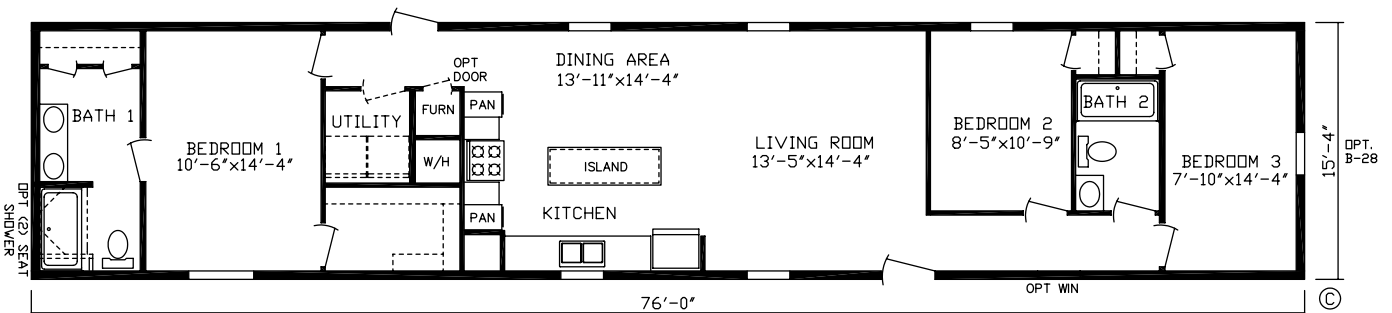
Butler Order No. 182508 1165 Sq. Ft.



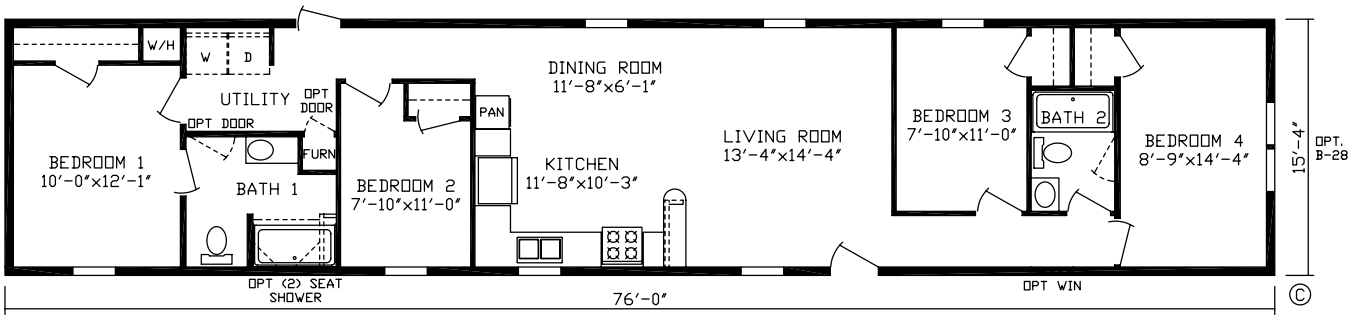
Preston Order No. 182509 1165 Sq. Ft.



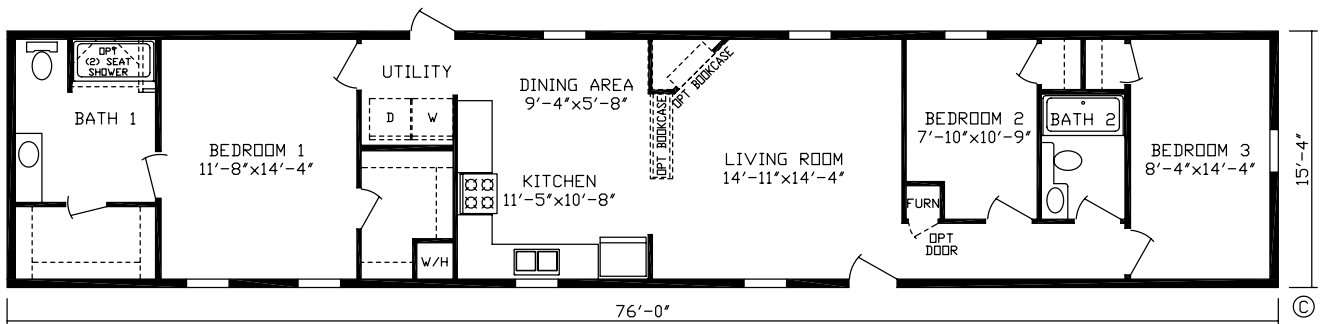
Wilson Order No. 182510 1165 Sq. Ft.



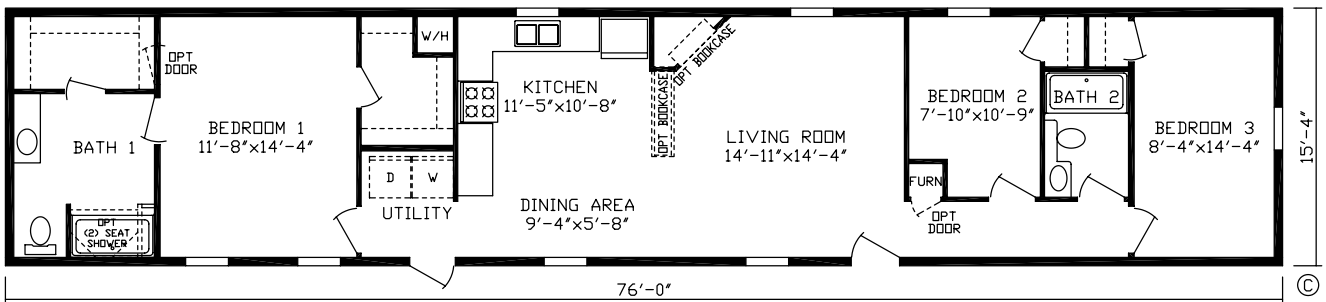
Spencer Order No. 182512 1165 Sq. Ft.



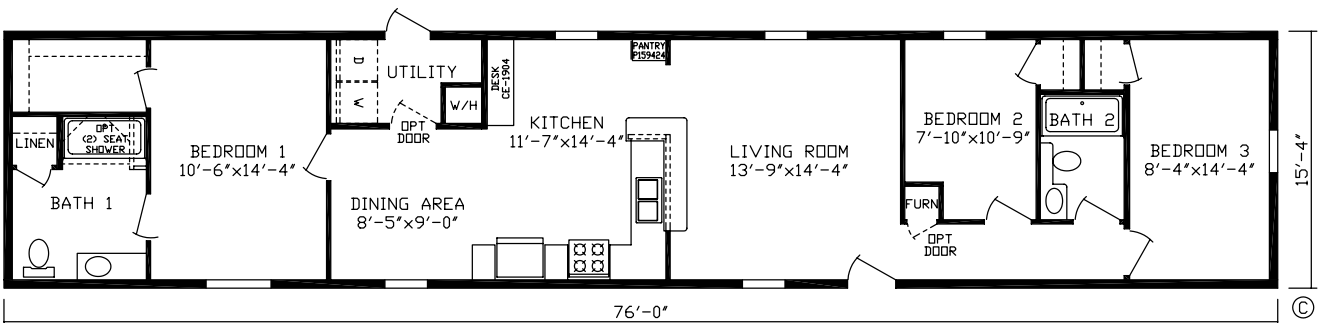
**Bradford Order No. 182513 1165 Sq. Ft.**



**Grand Sable Order No. 182515 1165 Sq. Ft.**



**Grand Sable Reverse Isle Order No. 182517 1165 Sq. Ft.**



**Mason Order No. 182516 1165 Sq. Ft.**

# TRIUMPH ELITE

## SERIES STANDARDS

### Construction

8' Sidewalls W/Flat Ceilings  
30# Roof  
Stippled Ceilings

### Kitchen

Gallery Wrapped Cabinets Throughout  
40" Overhead Cabinets in Kitchen  
Drawer Over Door Construction  
Dove Tail Drawers  
Washer/Dryer Cabinets  
Cabinet Over Refrigerator

### Insulation

R-33 Roof Insulation  
2 x 6 Sidewalls With R-19 Insulation  
R-11 Floor Insulation

### Exterior

OSB Wrap Around Entire Home – Seams are  
Taped & Caulked  
Double 4" Dutch Vinyl Lap Siding  
Panel Shutters Doorside  
Hitch End Elevation (Singles)

### Electrical & Plumbing

Recessed Can Lights in Kitchen & Dining Room  
Rust Coach Light at Front & Rear Doors  
Glass Light Fixtures  
30 Gallon Electric Water Heater  
Gas Furnace  
Main Water Shut Off  
Moen Single Lever Kitchen Faucet  
Stainless Steel Kitchen Sink

### Decor

3 5/8" Crown Installed in Living Areas  
Valances in Living Areas  
Mini Blinds Throughout  
Standout Wheatfield Carpet W/Tack Strip

### Doors & Windows

34x80 White Decorator Front Door  
32x76 White Cottage Rear Door  
White Low E Argon Gas Filled Thermopane  
Windows W/Grids

### Appliances Whirlpool

18 CF Refrigerator  
30" Gas Range  
Vented Range

©Copyright 2015 Fairmont Homes, LLC

Note: For model dimensions, our standards and standards of the industry generally include a nominal 4-foot allowance for hitch length plus allowance for other appurtenances for width and for length normally included in measurements for highway movement. Rear bedroom dimensions include bay, unless bay is optional on a particular unit or is omitted by special order. Room sizes are nominal and sometimes the dimension includes wall thickness. Designs, specifications and prices are subject to change without notice. Some optional items are shown. Some tires, wheels, brakes and axles are reused after careful inspection.

05-15 SP 10

©Cover Images Are Artist Renderings.

Visit Our Website at [www.fairmonthomes.com](http://www.fairmonthomes.com)

